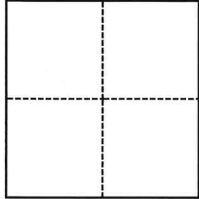


CORNER RECORD

Agency Index

CR-25-150

Document Number

City of Stockton County of San Joaquin, CaliforniaBrief Legal Description Found Chiseled x at back of walk, chiseled x in sidewalk, and 3.5 inch axle along Tuxedo Avenue between San Jose Street and Manchester Avenue, as shown on RS 26-100 and CHW FF-359**CORNER TYPE****COORDINATES (Optional)**

- ☐ Government Corner ☐ Control
☐ Meander ☒ Property
☐ Rancho ☐ Other

Date of Survey October 3, 2023

N. _____ E. _____

Elevation _____

Units ☐ Metric ☒ U.S. Survey FootHorizontal Datum NAD 83Zone 3 Epoch Date 1991.35

Vertical Datum _____

☒ Complies with Public Resources Code §§8801-8819☐ Complies with Public Resources Code §§8890-8902

PLS Act Ref.:

☐ 8765(d)☐ 8771☐ 8773☒ Other:Corner/
Monument:☒ Left as found☐ Established☐ Rebuilt☒ Pre-Construction☐ Found and tagged☐ Reestablished☐ Referenced☐ Post-Construction

Narrative of corner identified and monument as found, set, reset, replaced, or removed:

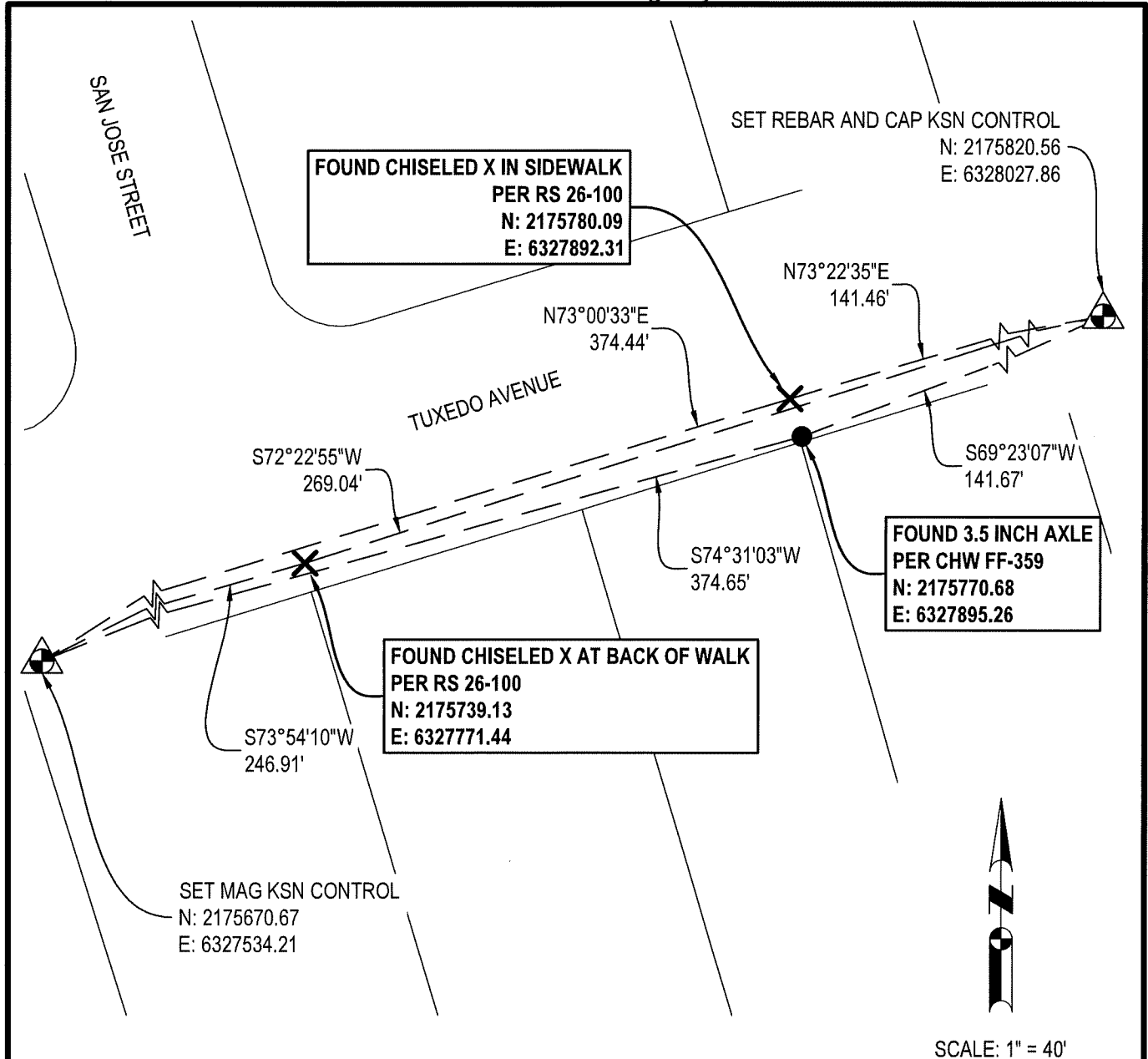
☒ See sheet #2 for description(s):**SURVEYOR'S STATEMENT**

This Corner Record was prepared by me or under my direction in conformance with

the Professional Land Surveyors' Act on April 21, 2025Signed  P.L.S. or R.C.E. No. 9916**COUNTY SURVEYOR'S STATEMENT**This Corner Record was received April 21, 2025and examined and filed April 29, 2025Signed  P.L.S. or R.C.E. No. 8657Title County Surveyor

County Surveyor's Comment





SCALE: 1" = 40'

SURVEY CONTROL STATEMENT

ALL COORDINATES, BEARINGS, AND DISTANCES ARE GRID AND BASED ON THE NORTH AMERICAN DATUM OF 1983 (NAD83) CONVERTED TO THE CALIFORNIA COORDINATE SYSTEM OF 1983, ZONE 3 (CCS83, ZONE 3) 1991.35 EPOCH ADJUSTMENT, AS REFERENCED BY AVAILABLE CITY OF STOCKTON PUBLISHED CONTROL MONUMENTS (RECORDED IN BOOK 35 OF SURVEYS AT PAGE 05, SAN JOAQUIN COUNTY RECORDS). GROUND DISTANCES MUST BE MULTIPLIED BY A COMBINED SCALE FACTOR (CSF) OF 0.999940175 TO OBTAIN GRID DISTANCES. UNITS SHOWN ARE BASED ON THE U.S. SURVEY FOOT.

NOTE:

THIS SURVEY DOES NOT DEFINE BOUNDARY OR RIGHT OF WAY LINES. PARCEL LINES SHOWN HEREON ARE FOR GENERAL LOCATION AND INFORMATION PURPOSES ONLY TO LOCATE THE PROJECT SITE. SAID LINEWORK IS BASED UPON SAN JOAQUIN COUNTY GIS PARCEL DATA.



KSN CONTROL POINT



FOUND CHISELED X



FOUND 3.5 INCH AXLE

RS

RECORD OF SURVEY,
SAN JOAQUIN COUNTY RECORDS

CHW

CHAS. H. WIDDOWS