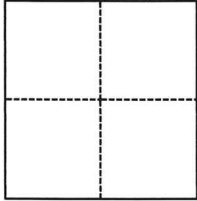


CORNER RECORD

Agency Index

CR-25-147

Document Number

City of Stockton County of San Joaquin, CaliforniaBrief Legal Description Lots 1185, 1186, 1187, 1188, 1189, M&P 25-66**CORNER TYPE****COORDINATES (Optional)**

- ☐ Government Corner ☐ Control
☐ Meander ☒ Property
☐ Rancho ☐ Other

Date of Survey April 14, 2025

N. _____ E. _____

Elevation _____

Units ☐ Metric ☐ U.S. Survey Foot

Horizontal Datum _____

Zone _____ Epoch Date _____

Vertical Datum _____

☐ Complies with Public Resources Code §§8801-8819☐ Complies with Public Resources Code §§8890-8902

PLS Act Ref.:

☐ 8765(d)☒ 8771☐ 8773☐ Other:Corner/
Monument:☒ Left as found☐ Established☐ Rebuilt☒ Pre-Construction☐ Found and tagged☐ Reestablished☒ Referenced☐ Post-Construction

Narrative of corner identified and monument as found, set, reset, replaced, or removed:

☒ See sheet #2 for description(s):**SURVEYOR'S STATEMENT**

This Corner Record was prepared by me or under my direction in conformance with

the Professional Land Surveyors' Act on April 14, 2025Signed [Signature] P.L.S. or R.C.E. No. PLS 7889**COUNTY SURVEYOR'S STATEMENT**This Corner Record was received April 25, 2025and examined and filed April 29, 2025Signed James E. Hart P.L.S. or R.C.E. No. 8657Title County Surveyor

County Surveyor's Comment



LEGEND:

M&P MAPS & PLATS, VOLUME AND PAGE,
SAN JOAQUIN COUNTY RECORDS

FD FOUND

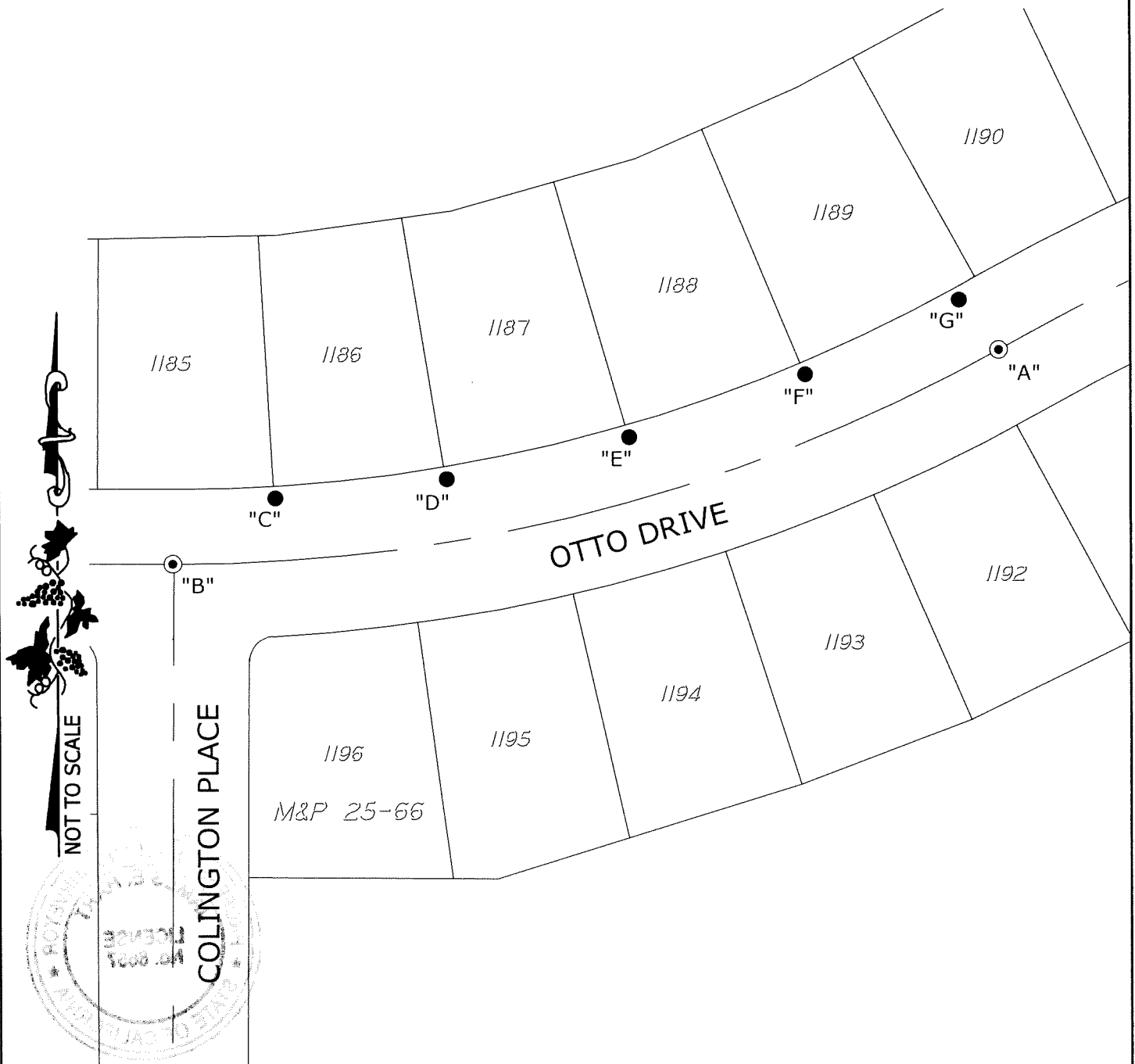
● FOUND CHISELED CROSS

○ FOUND 3/4" IRON PIN TAGGED

"R.C.E. 15831" IN MONUMENT BOX

DESCRIPTION:

THIS CORNER RECORD IS FOR THE PURPOSE OF MONUMENT PRESERVATION. REFERENCES WERE FOUND AND/OR SET FOR FOUND MONUMENTS AS NOTED ON DIAGRAM. NO BOUNDARY ANALYSIS WAS PERFORMED. THIS CORNER RECORD DOES NOT VERIFY THE MONUMENT(S) TO BE IN THE CORRECT POSITION.



ANGLE AND DISTANCE TABLE			
BS-O-FS	ANGLE	BS DISTANCE	FS DISTANCE
A-C-B	158°51'53"	48.57'	295.01'
A-D-B	175°59'15"	114.63'	226.32'
A-E-B	177°49'10"	189.34'	151.48'
A-F-B	170°36'17"	263.92'	77.65'
A-G-B	109°52'58"	331.25'	25.48'