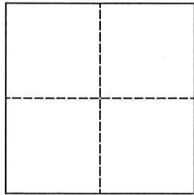


CORNER RECORD

Agency Index

CR-25-144

Document Number

City of _____ County of San Joaquin, CaliforniaBrief Legal Description Wetherbee Avenue @ Oak StreetWithin Section 10, T2S, R6E, Mount Diablo Base & Meridian**CORNER TYPE****COORDINATES (Optional)**Government Corner ☐ Control ☐
Meander ☐ Property ☐
Rancho ☐ Other ☒Date of Survey October 25, 2024

N. _____ E. _____

Elevation. _____

Units Metric ☐ U.S. Survey Foot ☒

Horizontal Datum _____

Zone _____ Epoch Date _____

Vertical Datum _____

☐ Complies with Public Resources Code §§8801-8819☐ Complies with Public Resources Code §§8890-8902

PLS Act Ref.:

☐ 8765(d)☒ 8771☐ 8773☐ Other:Corner/
Monument:☒ Left as found☐ Established☐ Rebuilt☒ Pre-Construction☐ Found and tagged☐ Reestablished☐ Referenced☐ Post-Construction

Narrative of corner identified and monument as found, set, reset, replaced, or removed:

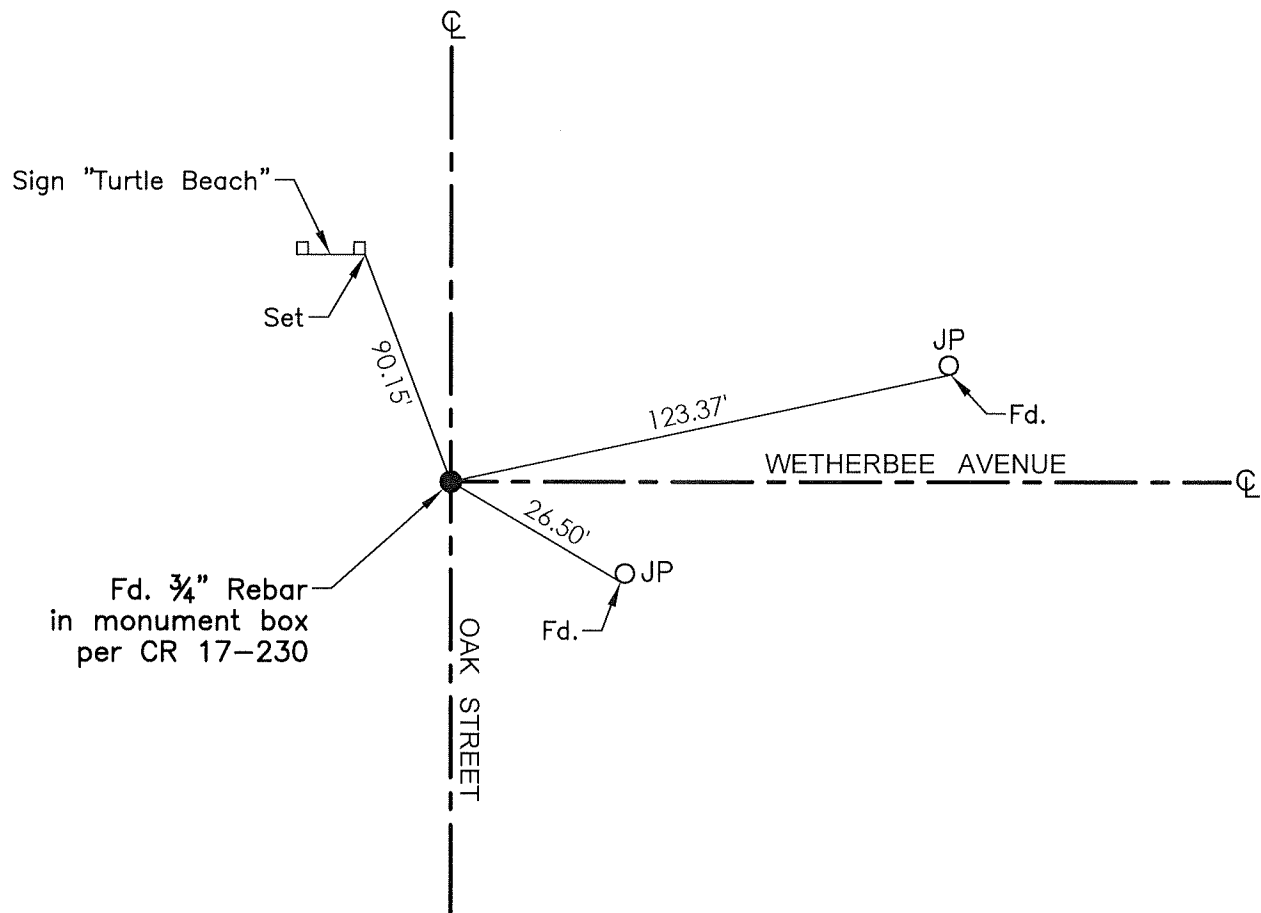
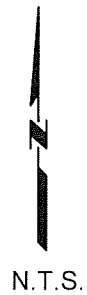
☒ See sheet #2 for description(s):**SURVEYOR'S STATEMENT**

This Corner Record was prepared by me or under my direction in conformance with

the Professional Land Surveyor's Act on December 30, 2024Signed Robert L. Borsdorf III P.L.S. or R.C.E. No. 9728**COUNTY SURVEYOR'S STATEMENT**This Corner Record was received April 22, 2025and examined and filed April 24, 2025Signed James E. Hart P.L.S. or R.C.E. No. 8657

Title _____ County Surveyor

County Surveyor's Comment



TR=Tree
 MB=Mailbox
 BM=Bench Mark
 EP=Edge of Pavement
 YL=Yellow Line
 FH=Fire Hydrant
 CR=Corner Record
 FP=Fence Post
 JP=Joint Pole
 LP=Light Pole
 PP=Power Pole
 GP=Guy Pole
 SP=Service Pole
 TP=Telephone Pole
 S.F.N.=Searched Found Nothing
 N.T.S.=Not To Scale
 M&P=Maps & Plats
 PM=Parcel Map
 RS=Record of Survey
 FB=Field Book
 N=North
 SDI=Storm Drain Inlet
 TOC=Top of Curb
 PCC=Portland Cement Concrete

Set=Conc. Nail with Brass Washer stamped
 "S.J. Co.", unless otherwise noted
 Fd.=Found Conc. Nail with Brass Washer stamped
 "S.J. Co.", unless otherwise noted
 Note: Found Monuments are not tagged unless
 otherwise noted.

"No attempt was made to verify the Monument(s)"