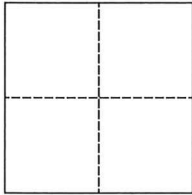


# CORNER RECORD

Agency Index

CR-25-137

Document Number

City of \_\_\_\_\_ County of San Joaquin, CaliforniaBrief Legal Description Carter Road @ Paddon Drive (private road)Within Section 34, T1N, R9E, Mount Diablo Base & Meridian**CORNER TYPE****COORDINATES (Optional)**

Government Corner ☐ Control ☐  
Meander ☐ Property ☐  
Rancho ☐ Other ☒

Date of Survey April 19, 2024

N. \_\_\_\_\_ E. \_\_\_\_\_

Elevation. \_\_\_\_\_

Units Metric ☐ U.S. Survey Foot ☒

Horizontal Datum \_\_\_\_\_

Zone \_\_\_\_\_ Epoch Date \_\_\_\_\_

Vertical Datum \_\_\_\_\_

☐ Complies with Public Resources Code §§8801-8819☐ Complies with Public Resources Code §§8890-8902

PLS Act Ref.:

☐ 8765(d)☒ 8771☐ 8773☐ Other:Corner/  
Monument:☒ Left as found☐ Established☐ Rebuilt☒ Pre-Construction☐ Found and tagged☐ Reestablished☐ Referenced☐ Post-Construction

Narrative of corner identified and monument as found, set, reset, replaced, or removed:

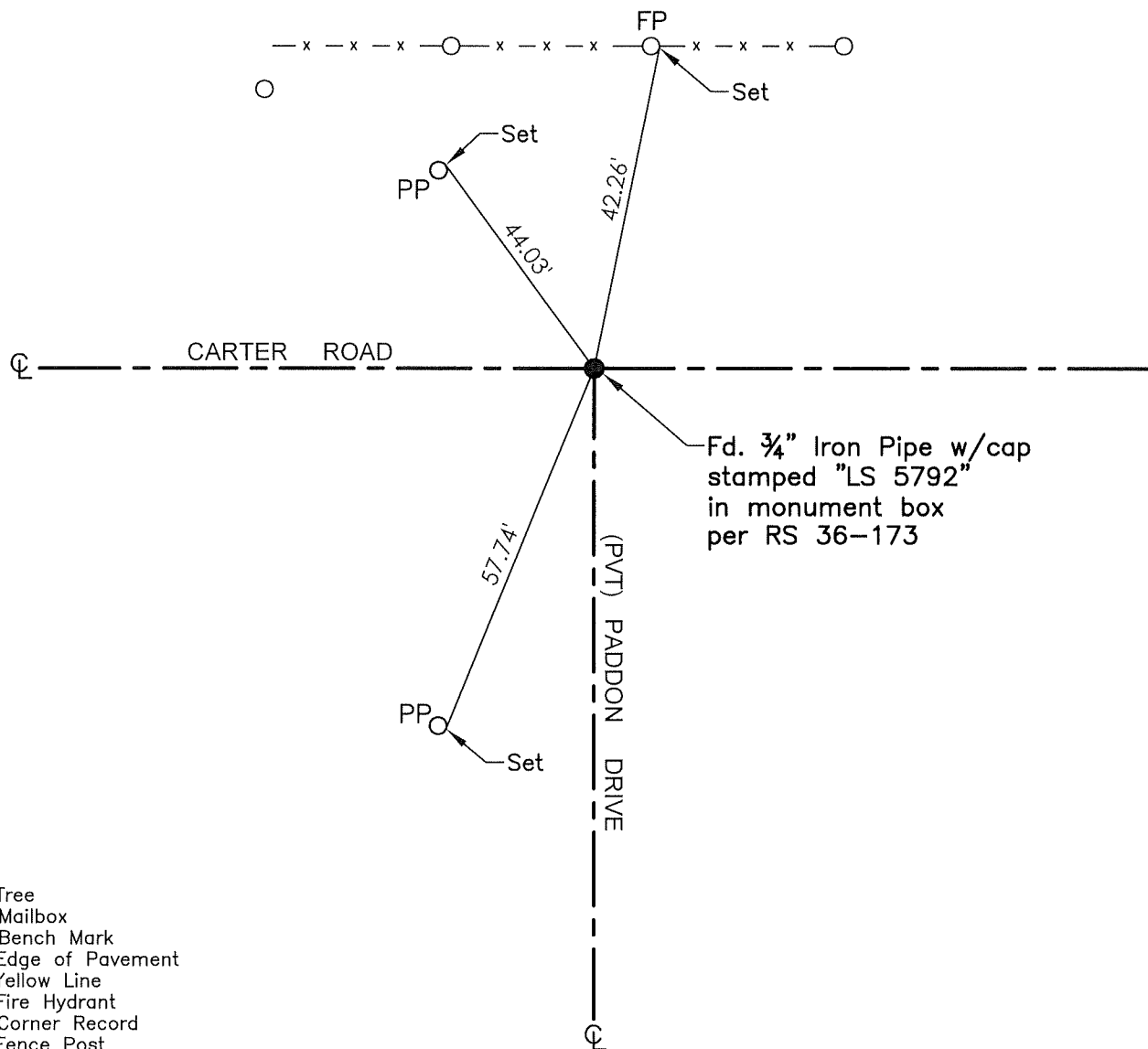
☒ See sheet #2 for description(s):**SURVEYOR'S STATEMENT**

This Corner Record was prepared by me or under my direction in conformance with

the Professional Land Surveyor's Act on June 7, 2024Signed Robert L. Borsdorf III P.L.S. or R.C.E. No. 9728**COUNTY SURVEYOR'S STATEMENT**This Corner Record was received April 22, 2025and examined and filed April 24, 2025Signed James E. Hart P.L.S. or R.C.E. No. 8657

Title \_\_\_\_\_ County Surveyor

**County Surveyor's Comment**



TR=Tree  
 MB=Mailbox  
 BM=Bench Mark  
 EP=Edge of Pavement  
 YL=Yellow Line  
 FH=Fire Hydrant  
 CR=Corner Record  
 FP=Fence Post  
 JP=Joint Pole  
 LP=Light Pole  
 PP=Power Pole  
 GP=Guy Pole  
 SP=Service Pole  
 TP=Telephone Pole  
 S.F.N.=Searched Found Nothing  
 N.T.S.=Not To Scale  
 M&P=Maps & Plats  
 PM=Parcel Map  
 RS=Record of Survey  
 FB=Field Book  
 N=North  
 SDI=Storm Drain Inlet  
 TOC=Top of Curb  
 PCC=Portland Cement Concrete

Set=Conc. Nail with Brass Washer stamped  
 "S.J. Co.", unless otherwise noted  
 Fd.=Found Conc. Nail with Brass Washer stamped  
 "S.J. Co.", unless otherwise noted  
 Note: Found Monuments are not tagged unless  
 otherwise noted.

"No attempt was made to verify the Monument(s)"