

CORNER RECORD

Agency Index

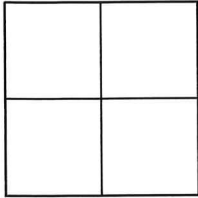
CR-25-114

Document Number

City of MANTECA

County of SAN JOAQUIN, California

Brief Legal Description PORTION OF THE NORTHWEST QUARTER OF SECTION 5, TOWNSHIP 2 SOUTH, RANGE 7 EAST, MOUNT DIABLO BASE AND MERIDIAN

CORNER TYPE**COORDINATES (Optional)**

- ☐ Government Corner ☐ Control
☐ Meander ☒ Property
☐ Rancho ☐ Other

N. E.

Elevation

Units Metric ☐ U.S. Survey Foot ☐

Horizontal Datum

Zone Epoch Date

Vertical Datum

Date of Survey 2/28/2025

☐ Complies with Public Resources Code §§8801-8819☐ Complies with Public Resources Code §§8890-8902PLS Act Ref: ☐ 8765(d)☒ 8771☐ 8773☐ Other:Corner/ ☒ Left as found☐ Established☐ Rebuilt☒ Pre-ConstructionMonument: ☐ Found and tagged ☐ Reestablished☐ Referenced☐ Post-Construction

Narrative of corner identified and monument as found, set, reset, replaced, or removed:

☒ See sheet #2 for description (s):

THIS POINT WAS REFERENCED PRIOR TO A CONSTRUCTION PROJECT IN THE VICINITY. THE TIES SHOWN HEREON ARE FOR THE PURPOSE OF PERPETUATING FOUND MONUMENTATION. NO CLAIM IS MADE AS TO THE RELATIONSHIP OF THE POINTS OR LINES SHOWN HEREON.

SURVEYOR'S STATEMENT

This Corner Record was prepared by me or under my direction in conformance with the Professional Land Surveyors' Act on 3/1/2025

Signed  P.L.S. or R.C.E. No. LS 9384**COUNTY SURVEYOR'S STATEMENT**

This Corner Record was received April 14, 2025

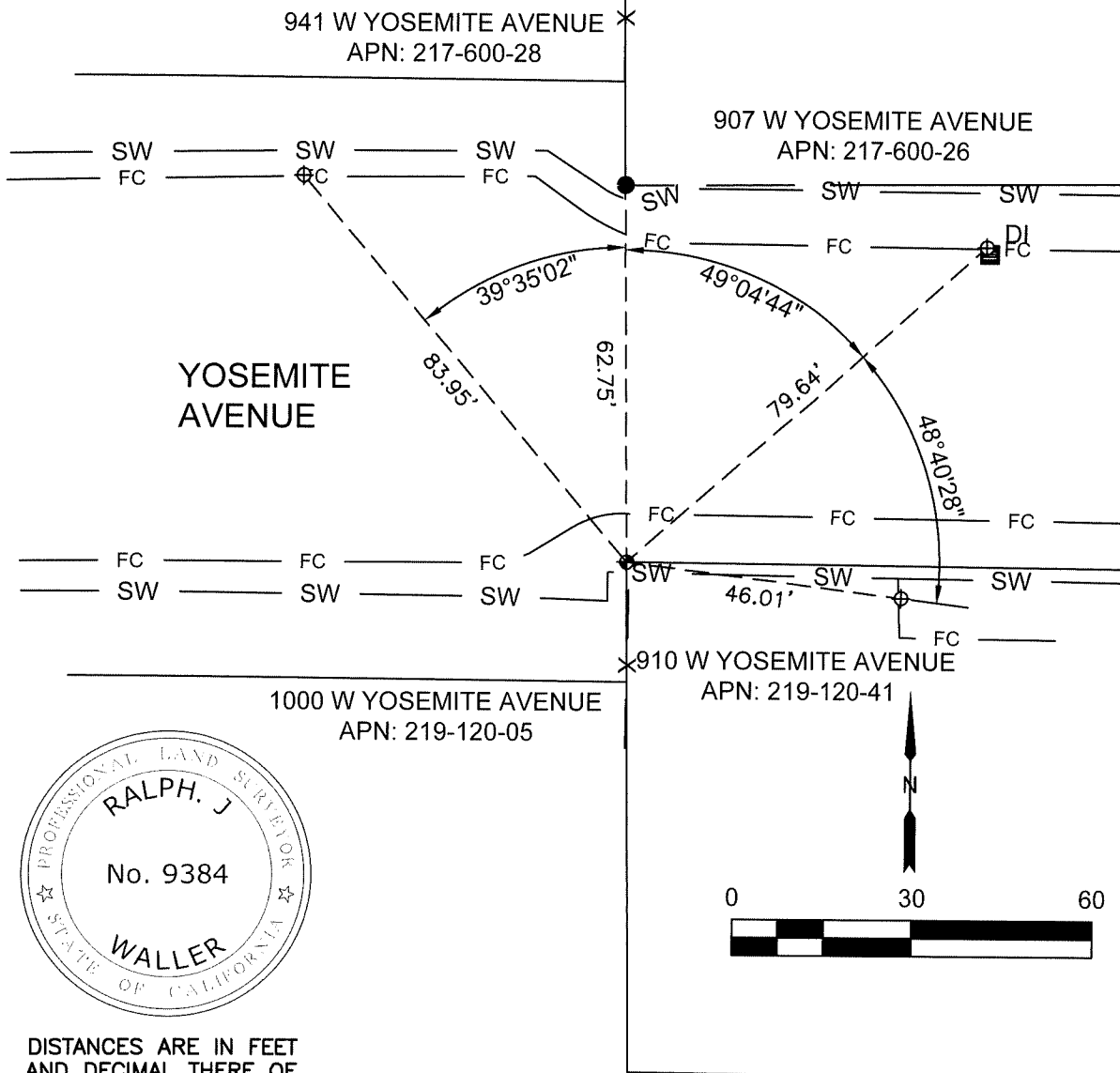
and examined and filed April 22, 2025

Signed James E. Hart P.L.S. or R.C.E. No. 8657

Title County Surveyor



County Surveyor's Comment



DISTANCES ARE IN FEET
AND DECIMAL THERE OF.

LEGEND

These standard symbols will
be found in the drawing.

FENCE LINE

STORM DRAIN INLET

FOUND 1/2" BRASS TAG STAMPED LS 4450 N.R.

NO RECORD

FOUND 1" ROD NO TAG N.R.

SET 1/2" BRASS TAG MARKED R.P. LS 9384

TIE LINE

EDGE OF SIDEWALK

FACE OF CURB

ASSESSOR PARCEL NUMBER

— X — X — X — X —

DI

\oplus

N.R.

●

\oplus

— — —

— SW — SW —

— FC — FC —

APN