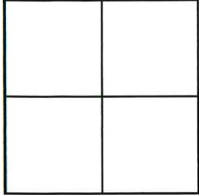


CORNER RECORD

Agency Index

CR-25-110

Document Number

City of MANTECACounty of SAN JOAQUIN, CaliforniaBrief Legal Description CITY OF MANTECA BENCHMARK # 48**CORNER TYPE**

- ☐ Government Corner ☒ Control
☐ Meander ☐ Property
☐ Rancho ☐ Other

Date of Survey 2/8/2025**COORDINATES (Optional)**

N. _____ E. _____

Elevation _____
Units Metric ☐ U.S. Survey Foot ☐

Horizontal Datum _____

Zone _____ Epoch Date _____

Vertical Datum _____

☐ Complies with Public Resources Code §§8801-8819☐ Complies with Public Resources Code §§8890-8902PLS Act Ref: ☐ 8765(d) ☒ 8771 ☐ 8773 ☐ Other:

Corner/Monument: ☒ Left as found ☐ Established ☐ Rebuilt ☒ Pre-Construction
☐ Found and tagged ☐ Reestablished ☐ Referenced ☐ Post-Construction

Narrative of corner identified and monument as found, set, reset, replaced, or removed:

☒ See sheet #2 for description (s):

FOUND CITY BENCHMARK # 48. THIS POINT WAS REFERENCED PRIOR TO A CONSTRUCTION PROJECT IN THE VICINITY. THE TIES SHOWN HEREON ARE FOR THE PURPOSE OF PERPETUATING FOUND MONUMENTATION. NO CLAIM IS MADE AS TO THE RELATIONSHIP OF THE POINTS OR LINES SHOWN HEREON.

SURVEYOR'S STATEMENT

This Corner Record was prepared by me or under my direction in conformance with the Professional Land Surveyors' Act on 2/10/2025

Signed [Signature] P.L.S. or R.C.E. No. LS 9384**COUNTY SURVEYOR'S STATEMENT**

This Corner Record was received April 14, 2025
and examined and filed April 22, 2025

Signed James E. Hart P.L.S. or R.C.E. No. 8657Title County Surveyor

County Surveyor's Comment

LEGEND

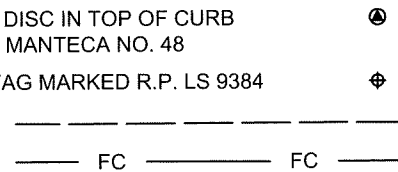
These standard symbols will
be found in the drawing.

FOUND 2" BRASS DISC IN TOP OF CURB
MARKED CITY OF MANTECA NO. 48

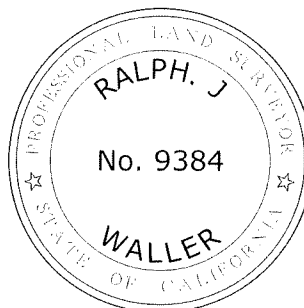
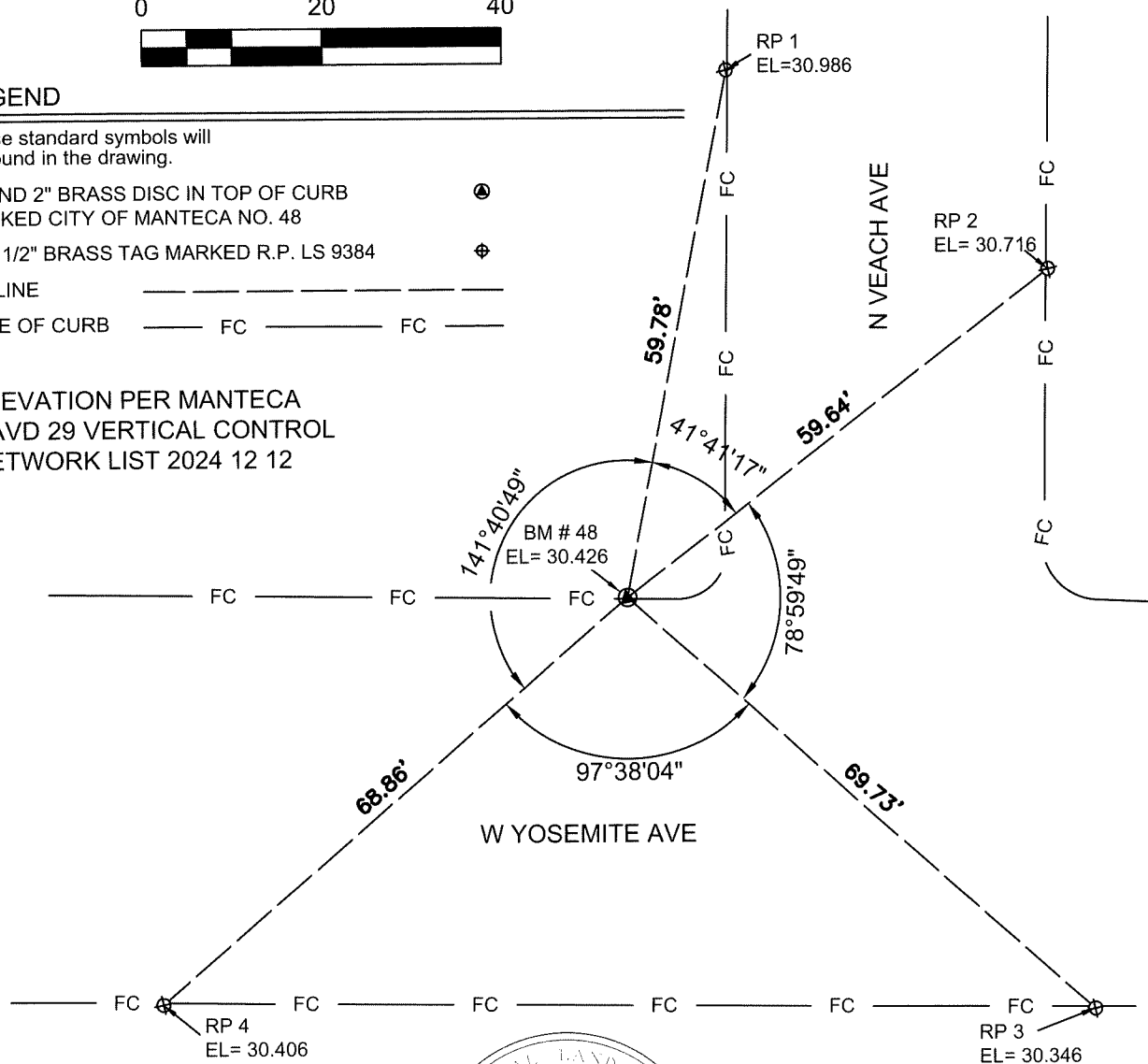
SET 1/2" BRASS TAG MARKED R.P. LS 9384

TIE LINE

FACE OF CURB



ELEVATION PER MANTECA
NAVD 29 VERTICAL CONTROL
NETWORK LIST 2024 12 12



DISTANCES ARE IN FEET
AND DECIMAL THERE OF.