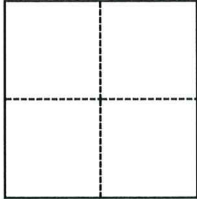


CORNER RECORD

Agency Index

CR-25-109

Document Number

City of _____ County of San Joaquin, California
Brief Legal Description Parcel B, P.M. 22-59**CORNER TYPE****COORDINATES (Optional)**

- | | |
|--|--|
| <input type="checkbox"/> Government Corner | <input type="checkbox"/> Control |
| <input type="checkbox"/> Meander | <input checked="" type="checkbox"/> Property |
| <input type="checkbox"/> Rancho | <input type="checkbox"/> Other |

Date of Survey January 21, 2025

N. _____ E. _____

Elevation _____

Units ☐ Metric ☐ U.S. Survey Foot

Horizontal Datum _____

Zone _____ Epoch Date _____

Vertical Datum _____

☐ Complies with Public Resources Code §§8801-8819☐ Complies with Public Resources Code §§8890-8902

PLS Act Ref.:

☐ 8765(d)☒ 8771☐ 8773☐ Other:Corner/
Monument:☒ Left as found☐ Established☐ Rebuilt☒ Pre-Construction☐ Found and tagged☐ Reestablished☒ Referenced☐ Post-Construction

Narrative of corner identified and monument as found, set, reset, replaced, or removed:

☒ See sheet #2 for description(s):**SURVEYOR'S STATEMENT**

This Corner Record was prepared by me or under my direction in conformance with

the Professional Land Surveyors' Act on January 21, 2025

Signed

P.L.S. or R.C.E. No.

PLS 7889**COUNTY SURVEYOR'S STATEMENT**

This Corner Record was received

April 16, 2025

and examined and filed

April 22, 2025

Signed

County Surveyor

P.L.S. or R.C.E. No.

8657

Title

County Surveyor's Comment

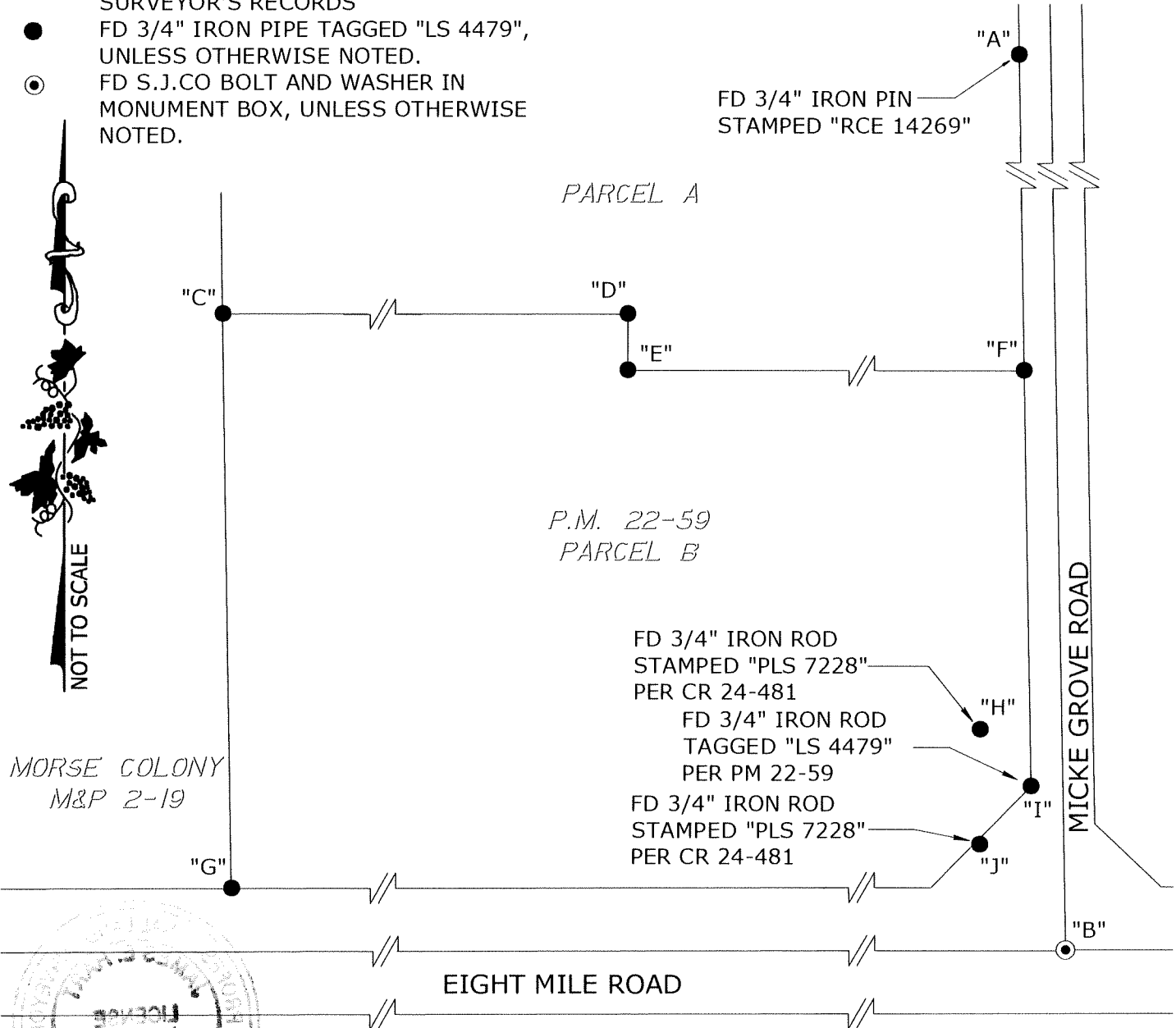


LEGEND:

- P.M. PARCEL MAP, BOOK AND PAGE, SAN JOAQUIN COUNTY RECORDS
 M&P MAPS AND PLATS, VOLUME AND PAGE, SAN JOAQUIN COUNTY RECORDS
 FD FOUND
 CR CORNER RECORD, SAN JOAQUIN COUNTY SURVEYOR'S RECORDS
 ● FD 3/4" IRON PIPE TAGGED "LS 4479", UNLESS OTHERWISE NOTED.
 ⊙ FD S.J.CO BOLT AND WASHER IN MONUMENT BOX, UNLESS OTHERWISE NOTED.

DESCRIPTION:

THIS CORNER RECORD IS FOR THE PURPOSE OF MONUMENT PRESERVATION. REFERENCES WERE FOUND AND/OR SET FOR FOUND MONUMENTS AS NOTED ON DIAGRAM. NO BOUNDARY ANALYSIS WAS PERFORMED. THIS CORNER RECORD DOES NOT VERIFY THE MONUMENT(S) TO BE IN THE CORRECT POSITION.



ANGLE AND DISTANCE TABLE

BS-O-FS	ANGLE	BS DISTANCE	FS DISTANCE
A-C-B	91°49'31"	1180.93'	757.60'
A-D-B	119°01'18"	1071.54'	551.41'
A-E-B	116°55'59"	1105.57'	525.90'
A-F-B	176°53'30"	1055.02'	368.61'
A-G-B	70°22'47"	1504.46'	636.96'
A-H-B	158°34'38"	1282.50'	150.04'
A-I-B	169°08'41"	1318.79'	106.20'
A-J-B	140°42'32"	1355.60'	86.03'