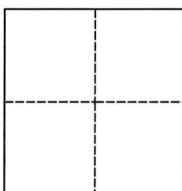


CORNER RECORD

Agency Index

CR-25-108

Document Number

City of Manteca County of San Joaquin, CaliforniaBrief Legal Description Centerlines of Waterfall Way & Airport Way, Section 36, T,1S., R,6E.**CORNER TYPE****COORDINATES (Optional)**Government Corner ☐ Control ☐
Meander ☐ Property ☐
Rancho ☐ Other ☒

N. _____ E. _____

Elevation _____

Units Metric ☐ U.S. Survey Foot ☒

Horizontal Datum _____

Zone _____ Epoch Date _____

Date of Survey April 3, 2025

Vertical Datum _____

☐ Complies with Public Resources Code §§8801-8819☐ Complies with Public Resources Code §§8890-8902

PLS Act Ref.:

☐ 8765(d)☒ 8771☐ 8773☐ Other:Corner/
Monument:☐ Left as found☐ Established☐ Rebuilt☐ Pre-Construction☐ Found and tagged☒ Reestablished☒ Referenced☒ Post-Construction

Narrative of corner identified and monument as found, set, reset, replaced, or removed:

☒ See sheet #2 for description(s):**SURVEYOR'S STATEMENT**

This Corner Record was prepared by me or under my direction in conformance with

the Professional Land Surveyors' Act on April 3, 2025.

Signed

P.L.S. or R.C.E. No.

8159**COUNTY SURVEYOR'S STATEMENT**This Corner Record was received April 4, 2025and examined and filed April 21, 2025.

Signed

P.L.S. or R.C.E. No.

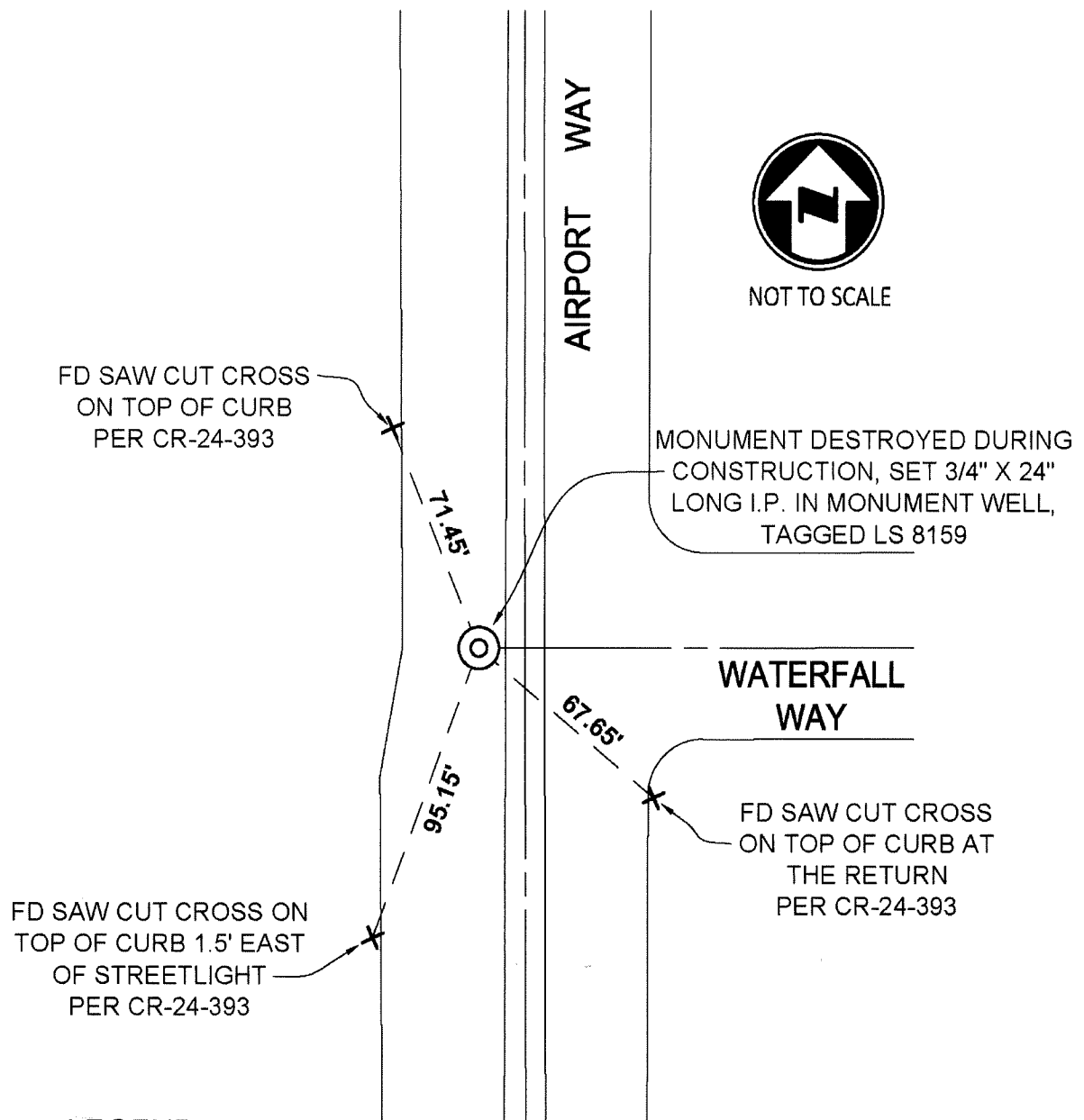
8657

Title

County Surveyor

County Surveyor's Comment



**LEGEND**

M&P-
S.J.C.R.

MAPS AND PLATS, BOOK, PAGE, S.J.C.R.
SAN JOAQUIN COUNTY RECORDS
FD SAW CUT CROSS PER CR-24-393
INDICATES FOUND
IRON PIPE

