

# CORNER RECORD

Agency Index

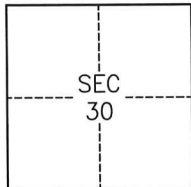
CR-25-092

Document Number

City of StocktonCounty of San Joaquin, CaliforniaBrief Legal Description Monuments found along Carly Dr. per 34-M&P-56, S.J.C.R.

## CORNER TYPE

## COORDINATES (Optional)



C.M. Weber Grant

- ☐ Government Corner ☐ Control  
☐ Meander ☒ Property  
☐ Rancho ☐ Other

Date of Survey February 10th, 2025

N. \_\_\_\_\_ E. \_\_\_\_\_

Elevation \_\_\_\_\_

Units

☐ Metric☐ U.S. Survey Foot

Horizontal Datum \_\_\_\_\_

Zone \_\_\_\_\_ Epoch Date \_\_\_\_\_

Vertical Datum \_\_\_\_\_

☐ Complies with Public Resources Code §§8801-8819☐ Complies with Public Resources Code §§8890-8902

PLS Act Ref.:

☐ 8765(d)☒ 8771☐ 8773☐ Other:Corner/  
Monument:☒ Left as found☐ Established☐ Rebuilt☒ Pre-Construction☐ Found and tagged☐ Reestablished☒ Referenced☐ Post-Construction

Narrative of corner identified and monument as found, set, reset, replaced, or removed:

☒ See sheet #2 for description(s):

## SURVEYOR'S STATEMENT

This Corner Record was prepared by me or under my direction in conformance with

the Professional Land Surveyors' Act on

FEBRUARY 18TH, 2025

Signed

P.L.S. or R.C.E. No. 8366

## COUNTY SURVEYOR'S STATEMENT

This Corner Record was received

March 3, 2025

and examined and filed

March 20, 2025

Signed

P.L.S. or R.C.E. No.

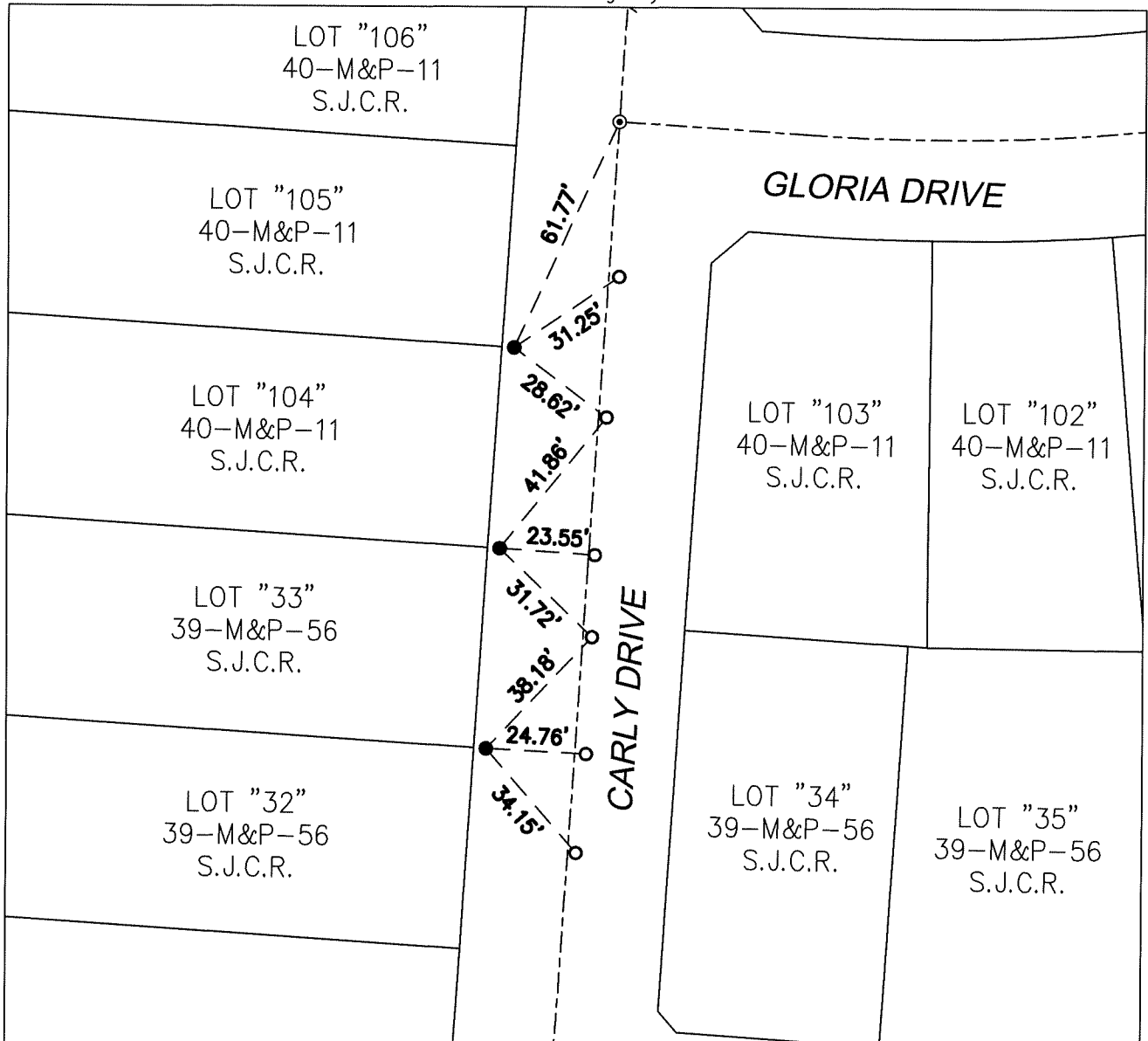
8657

Title

County Surveyor

County Surveyor's Comment





LEGEND:

S.J.C.R.



SAN JOAQUIN COUNTY RECORDS  
FOUND CHISELED X IN CONCRETE WALK  
SET MAG NAIL



FOUND 3/4" IRON PIPE, TAGGED L.S. 6953 IN MONUMENT WELL  
MAPS AND PLATS

M&P

