

CORNER RECORD

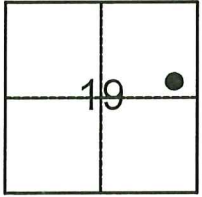
Agency Index: CR-24-196

Document Number: _____

City of TRACY

County of SAN JOAQUIN, California

Brief Legal Description TWO (2) CENTERLINE MONUMENTS ALONG CENTERLINE OF LOWELL AVENUE



T. 2 S., R. 5 E.

CORNER TYPE

- Government Corner
- Meander
- Rancho
- Control
- Property
- Other

Date of Survey 03-29-2024

COORDINATES (Optional)

- N. _____ E. _____
- Elevation _____
- Units Metric U.S. Survey Foot
- Horizontal Datum _____
- Zone _____ Epoch Date _____
- Vertical Datum _____
- Complies with Public Resources Code §§801-8819
- Complies with Public Resources Code §§890-8902

PLS Act Ref: 8765(d) 8771 8773 Other:

Corner/Monument: Left as found Established Rebuilt Pre-Construction

Found and Tagged Reestablished Referenced Post-Construction

Narrative of corner identified and monument as found, set, reset, replaced, or removed:

See sheet #2 for description(s):

FOUND MONUMENTS AS SHOWN ON SHEET 2.

SURVEYOR'S STATEMENT

This Corner Record was prepared by me or under my direction in conformance with the Land Surveyors' Act on APRIL 11, 2024,

Signed [Signature] P.L.S. or ~~R.C.E.~~ Number 6953



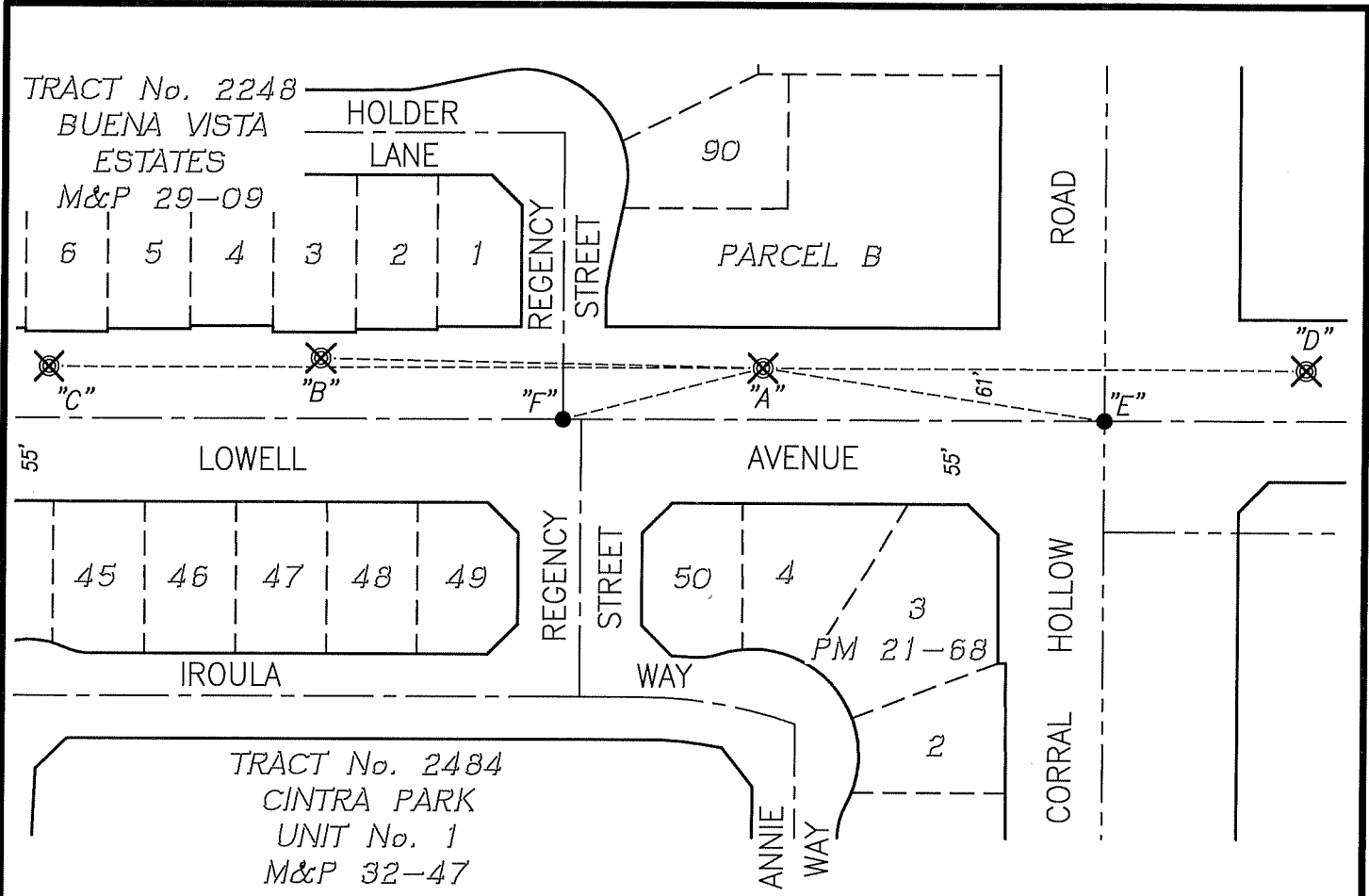
COUNTY SURVEYOR'S STATEMENT

This Corner Record was received April 12, 2024 and examined and filed May 2, 2024

Signed James E. Hart P.L.S. or R.C.E. No: 8657
Title County Surveyor



County Surveyor's Comment _____



BS-@-FS	☒	FS DISTANCE
C-A-C	00°00'00"	471.865'(M)
C-A-B	00°01'44"	292.660'(M)
C-A-D	180°06'54"	358.950'(M)
C-A-E	188°38'02"	228.200'(M)
C-A-F	345°33'17"	136.710'(M)



NOT TO SCALE

LEGEND:

- ☒ SET CONCRETE NAIL W/BRASS TAG "LS 6953"
- FD. 2.5" BRASS DISK, NOT STAMPED, IN MON. WELL (R1)
- FD. FOUND
- S.J.C.R. SAN JOAQUIN COUNTY RECORDS
- M&P MAPS & PLATS
- PM PARCEL MAP
- (M) MEASURED

REFERENCE:

(R1) M&P 32-47, S.J.C.R.