

CORNER RECORD

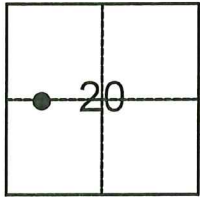
Agency Index: CR-24-195

Document Number: _____

City of TRACY

County of SAN JOAQUIN, California

Brief Legal Description ONE (1) CENTERLINE MONUMENT ALONG CENTERLINE OF LOWELL AVENUE



T. 2 S., R. 5 E.

CORNER TYPE

- Government Corner Control
 Meander Property
 Rancho Other

Date of Survey 03-29-2024

COORDINATES (Optional)

N. _____ E. _____

Elevation _____

Units Metric U.S. Survey Foot

Horizontal Datum _____

Zone _____ Epoch Date _____

Vertical Datum _____

Complies with Public Resources Code §§801-8819

Complies with Public Resources Code §§890-8902

PLS Act Ref: 8765(d) 8771 8773 Other:

Corner/
Monument: Left as found Established Rebuilt Pre-Construction
 Found and Tagged Reestablished Referenced Post-Construction

Narrative of corner identified and monument as found, set, reset, replaced, or removed:

See sheet #2 for description(s):

FOUND MONUMENTS AS SHOWN ON SHEET 2.

SURVEYOR'S STATEMENT

This Corner Record was prepared by me or under my direction in conformance with the Land Surveyors' Act on APRIL 11, 2024,

Signed *Kent A. Hysell* P.L.S. or ~~R.C.E.~~ Number 6953



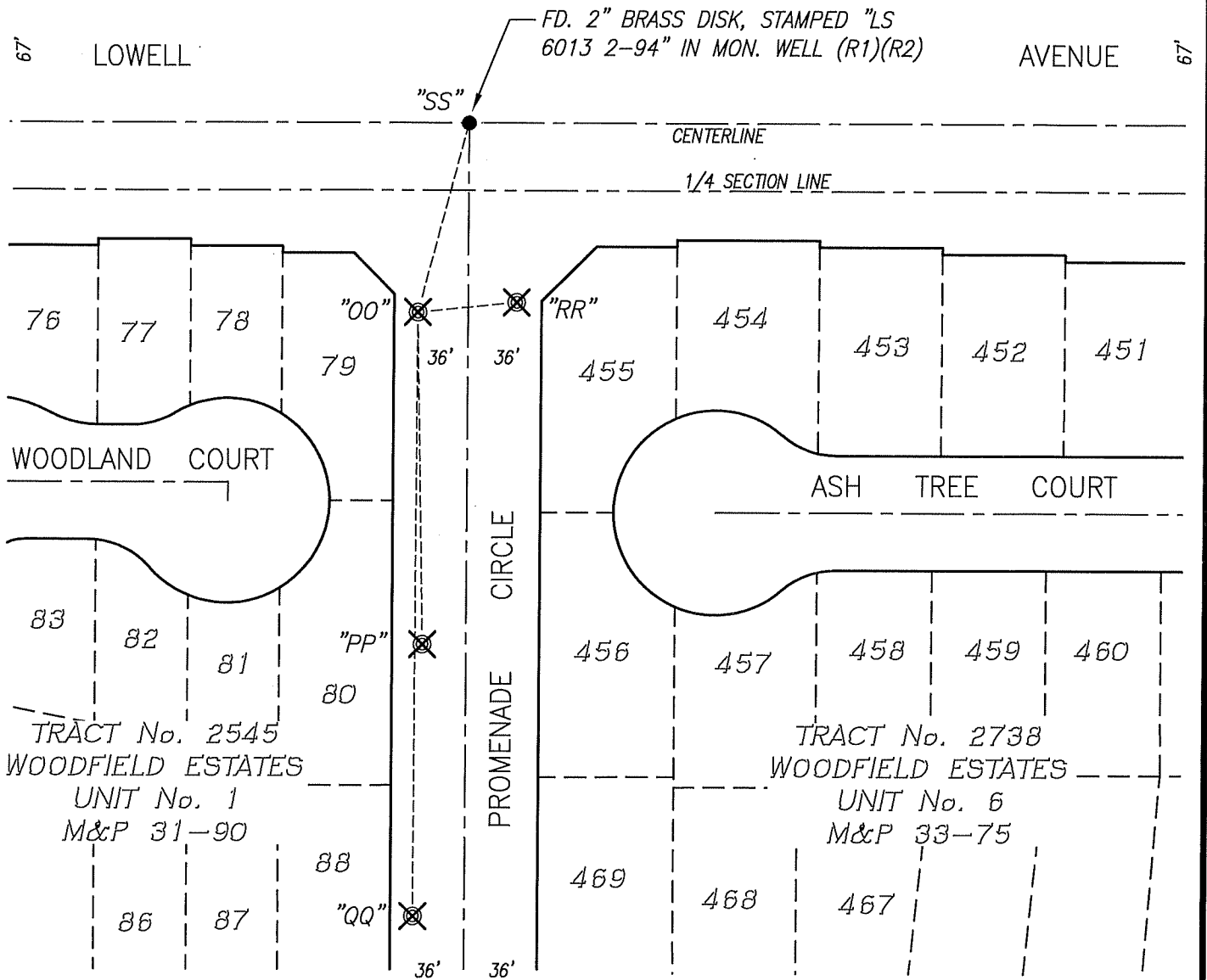
COUNTY SURVEYOR'S STATEMENT

This Corner Record was received April 12, 2024
and examined and filed May 2, 2024

Signed *James E. Hart* P.L.S. or R.C.E. No: 8657
Title County Surveyor



County Surveyor's Comment _____



BS-@-FS	✕	FS DISTANCE
QQ-00-QQ	00°00'00"	295.325'(M)
QQ-00-PP	359°59'56"	162.140'(M)
QQ-00-RR	264°09'10"	48.450'(M)
QQ-00-SS	194°37'46"	95.640'(M)

LEGEND:

- ✕ SET CONCRETE NAIL W/BRASS TAG "LS 6953"
- FD. MONUMENT AS NOTED
- FD. FOUND
- S.J.C.R. SAN JOAQUIN COUNTY RECORDS
- M&P MAPS & PLATS
- (M) MEASURED



NOT TO SCALE

REFERENCE:

- (R1) M&P 31-90, S.J.C.R.
- (R2) M&P 33-75, S.J.C.R.