

# CORNER RECORD

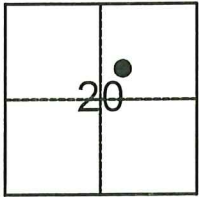
Agency Index: CR-24-194

Document Number: \_\_\_\_\_

City of TRACY

County of SAN JOAQUIN, California

Brief Legal Description FOUR (4) CENTERLINE MONUMENTS ALONG CENTERLINE OF LOWELL AVENUE



T. 2 S., R. 5 E.

### CORNER TYPE

- Government Corner
- Meander
- Rancho
- Control
- Property
- Other

Date of Survey 03-29-2024

### COORDINATES (Optional)

N. \_\_\_\_\_ E. \_\_\_\_\_

Elevation \_\_\_\_\_

Units  Metric  U.S. Survey Foot

Horizontal Datum \_\_\_\_\_

Zone \_\_\_\_\_ Epoch Date \_\_\_\_\_

Vertical Datum \_\_\_\_\_

Complies with Public Resources Code §§801-8819

Complies with Public Resources Code §§890-8902

PLS Act Ref:  8765(d)  8771  8773  Other: \_\_\_\_\_

Corner/  
Monument:  Left as found  Established  Rebuilt  Pre-Construction  
 Found and Tagged  Reestablished  Referenced  Post-Construction

Narrative of corner identified and monument as found, set, reset, replaced, or removed:

See sheet #2 for description(s):

FOUND MONUMENTS AS SHOWN ON SHEET 2.

### SURVEYOR'S STATEMENT

This Corner Record was prepared by me or under my direction in conformance with the Land Surveyors' Act on APRIL 11, 2024,



Signed [Signature] P.L.S. or ~~R.C.E.~~ Number 6953

### COUNTY SURVEYOR'S STATEMENT

This Corner Record was received April 12, 2024

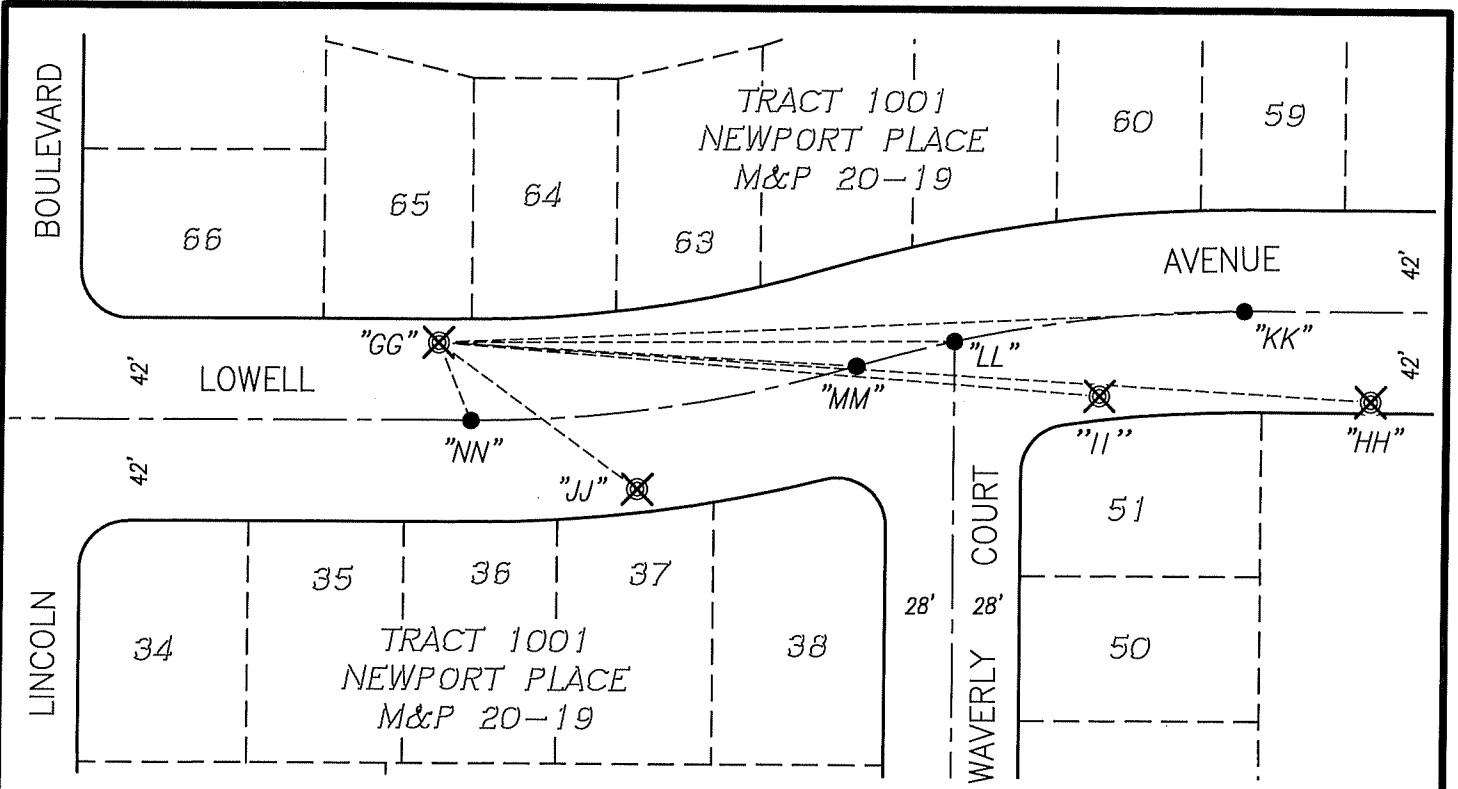
and examined and filed May 2, 2024

Signed [Signature] P.L.S. or R.C.E. No: 8657

Title County Surveyor



County Surveyor's Comment \_\_\_\_\_



X AND DISTANCE TABLE		
BS-@-FS	X	FS DISTANCE
HH-GG-HH	00°00'00"	388.350'(M)
HH-GG-II	00°59'02"	275.820'(M)
HH-GG-JJ	32°34'09"	102.775'(M)
HH-GG-KK	354°08'50"	335.160'(M)
HH-GG-LL	356°13'38"	213.880'(M)
HH-GG-MM	359°32'35"	174.100'(M)
HH-GG-NN	63°38'25"	35.005'(M)



NOT TO SCALE

**LEGEND:**

- ⊗ SET CONCRETE NAIL W/BRASS TAG "LS 6953"
- FD: 2" BRASS DISK, NOT STAMPED, IN MONUMENT WELL (R1), U.O.N.
- FD. FOUND
- U.O.N. UNLESS OTHERWISE NOTED
- S.J.C.R. SAN JOAQUIN COUNTY RECORDS
- M&P MAPS & PLATS
- (M) MEASURED

**REFERENCE:**

(R1) M&P 20-19, S.J.C.R.