

CORNER RECORD

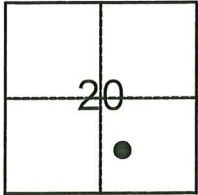
Agency Index: CR-24-191

Document Number: _____

City of TRACY

County of SAN JOAQUIN, California

Brief Legal Description: TWO (2) CENTERLINE MONUMENTS ALONG CENTERLINE OF LINCOLN BOULEVARD



T. 2 S., R. 5 E.

CORNER TYPE

- Government Corner
- Meander
- Rancho
- Control
- Property
- Other

Date of Survey 03-29-2024

COORDINATES (Optional)

N. _____ E. _____

Elevation _____

Units Metric U.S. Survey Foot

Horizontal Datum _____

Zone _____ Epoch Date _____

Vertical Datum _____

Complies with Public Resources Code §§8801-8819

Complies with Public Resources Code §§8890-8902

PLS Act Ref: 8765(d) 8771 8773 Other: _____

Corner/ Monument: Left as found Established Rebuilt Pre-Construction

Found and Tagged Reestablished Referenced Post-Construction

Narrative of corner identified and monument as found, set, reset, replaced, or removed:

See sheet #2 for description(s):

FOUND MONUMENTS AS SHOWN ON SHEET 2.

SURVEYOR'S STATEMENT

This Corner Record was prepared by me or under my direction in conformance with the Land Surveyors' Act on APRIL 11, 2024,



Signed [Signature] P.L.S. or ~~R.G.E.~~ Number 6953

COUNTY SURVEYOR'S STATEMENT

This Corner Record was received April 12, 2024

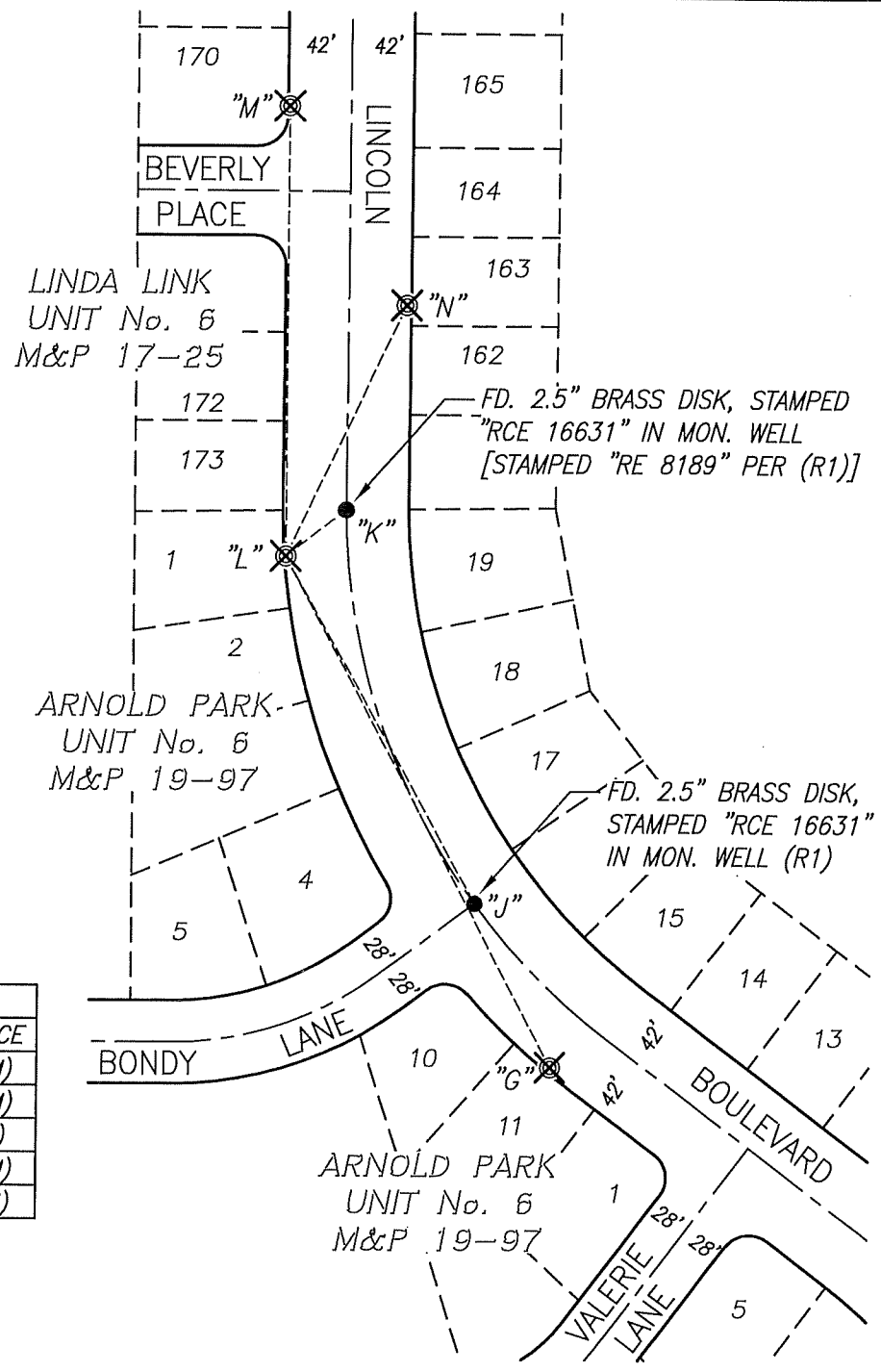
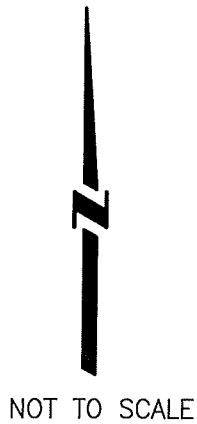
and examined and filed May 2, 2024

Signed James E. Hart P.L.S. or R.G.E. No: 8657

Title County Surveyor



County Surveyor's Comment _____



BS-@-FS	χ	FS DISTANCE
G-L-G	00°00'00"	388.720'(M)
G-L-J	358°54'54"	266.885'(M)
G-L-K	259°54'56"	50.635'(M)
G-L-M	207°47'39"	303.125'(M)
G-L-N	232°55'06"	186.825'(M)

LEGEND:

- ⊗ SET CONCRETE NAIL W/BRASS TAG "LS 6953"
- FD. MONUMENT AS NOTED
- FD. FOUND
- S.J.C.R. SAN JOAQUIN COUNTY RECORDS
- M&P MAPS & PLATS
- (M) MEASURED

REFERENCE:

(R1) M&P 19-97, S.J.C.R.