

CORNER RECORD

Agency Index CR-24-187

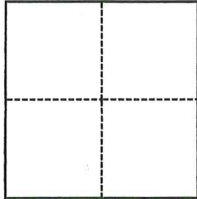
Document Number _____

City of STOCKTON County of SAN JOAQUIN, California

Brief Legal Description CHISELED CROSS BETWEEN LOTS 88 & 89, MAPS & PLATS 11-115

CORNER TYPE

COORDINATES (Optional)



- Government Corner
- Meander
- Rancho
- Control
- Property
- Other

Date of Survey 03/14/2024

N. _____ E. _____

Elevation _____

Units Metric U.S. Survey Foot

Horizontal Datum _____

Zone _____ Epoch Date _____

Vertical Datum _____

Complies with Public Resources Code §§8801-8819

Complies with Public Resources Code §§8890-8902

PLS Act Ref.: 8765(d) 8771 8773 Other:

Corner/Monument: Left as found Established Rebuilt Pre-Construction

Found and tagged Reestablished Referenced Post-Construction

Narrative of corner identified and monument as found, set, reset, replaced, or removed:

See sheet #2 for description(s):

PRE-CONSTRUCTION CORNER RECORD. THIS DOCUMENT IS FOR THE PURPOSE OF PRESERVING AND ESTABLISHING REFERENCE TIES TO FOUND MONUMENT, NOT TO SPECIFY HOW THIS MONUMENT RELATES TO PROPERTY LINES.

SURVEYOR'S STATEMENT

This Corner Record was prepared by me or under my direction in conformance with

the Professional Land Surveyors' Act on April 11, 2024

Signed [Signature] P.L.S. or R.C.E. No. L.S. 7600



COUNTY SURVEYOR'S STATEMENT

This Corner Record was received April 11, 2024

and examined and filed April 30, 2024

Signed James E. Hart P.L.S. or R.C.E. No. 8657

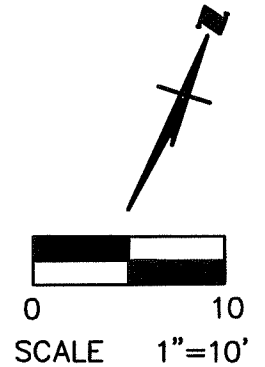
Title County Surveyor

County Surveyor's Comment

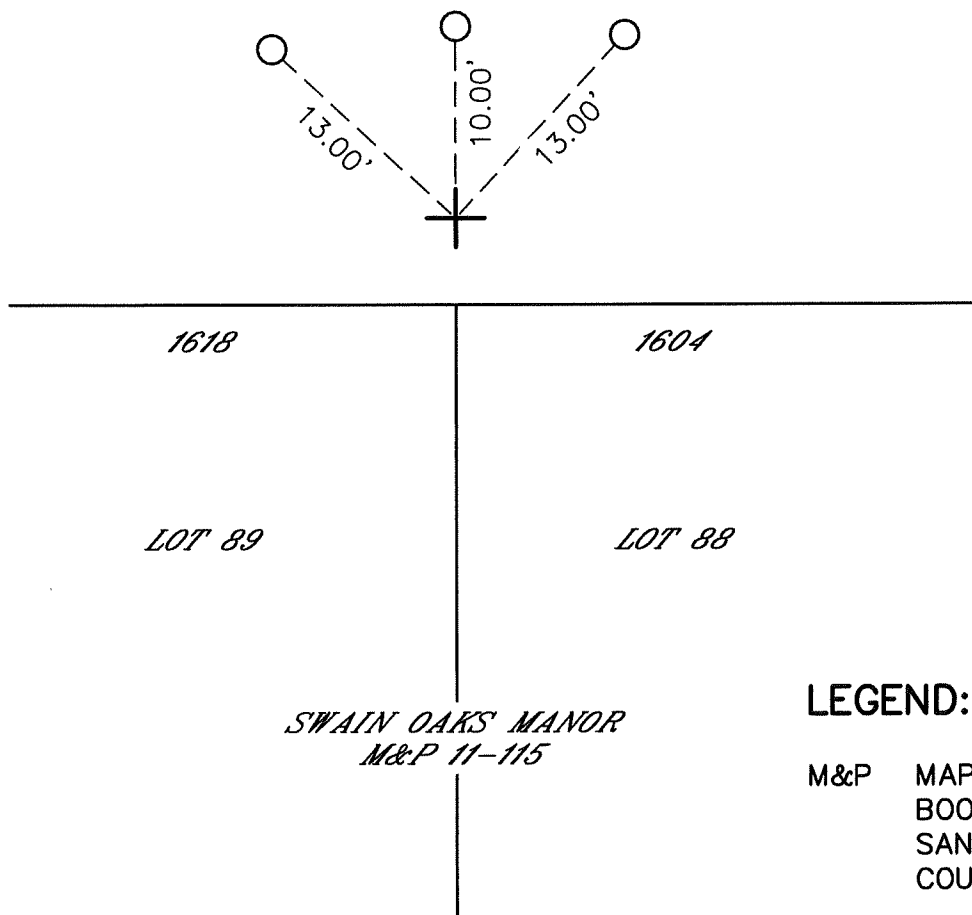


NOTE:

THE INTENT IS TO ESTABLISH REFERENCE TIES TO FOUND MONUMENT, NOT TO SPECIFY HOW THIS MONUMENT RELATES TO PROPERTY LINES. MAP REFERENCE ARE GEOGRAPHIC REFERENCES ONLY.





WOODLAND DRIVE

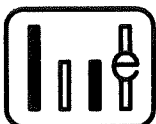


LEGEND:

- M&P MAPS AND PLATS, BOOK-PAGE, SAN JOAQUIN COUNTY RECORDS

-  FOUND CHISELED CROSS IN SIDEWALK, NO REFERENCE

-  SET PK NAIL WITH STEEL WASHER STAMPED L.S. 7600



WONG ENGINEERS, INC.
4578 FEATHER RIVER DRIVE, SUITE A
STOCKTON, CA 95219 (209) 476-0011
APRIL 11, 2024 PAGE 2 OF 2