

CORNER RECORD

Agency Index CR-24-186

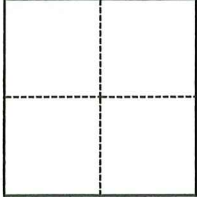
Document Number _____

City of STOCKTON County of SAN JOAQUIN, California

Brief Legal Description CHISELED CROSS BETWEEN LOTS 52 & 53, MAPS & PLATS 11-115

CORNER TYPE

COORDINATES (Optional)



- Government Corner
- Meander
- Rancho
- Control
- Property
- Other

Date of Survey March 14, 2024

N. _____ E. _____

Elevation _____

Units Metric U.S. Survey Foot

Horizontal Datum _____

Zone _____ Epoch Date _____

Vertical Datum _____

Complies with Public Resources Code §§8801-8819

Complies with Public Resources Code §§8890-8902

PLS Act Ref.: 8765(d) 8771 8773 Other:

Corner/Monument: Left as found Established Rebuilt Pre-Construction

Found and tagged Reestablished Referenced Post-Construction

Narrative of corner identified and monument as found, set, reset, replaced, or removed:

See sheet #2 for description(s):

PRE-CONSTRUCTION CORNER RECORD. THIS DOCUMENT IS FOR THE PURPOSE OF PRESERVING AND ESTABLISHING REFERENCE TIES TO FOUND MONUMENT, NOT TO SPECIFY HOW THIS MONUMENT RELATES TO PROPERTY LINES.

SURVEYOR'S STATEMENT

This Corner Record was prepared by me or under my direction in conformance with the Professional Land Surveyors' Act on April 11, 2024

Signed [Signature] P.L.S. or R.C.E. No. L.S. 7600



COUNTY SURVEYOR'S STATEMENT

This Corner Record was received April 11, 2024

and examined and filed April 30, 2024

Signed James E. Hart P.L.S. or R.C.E. No. 8657

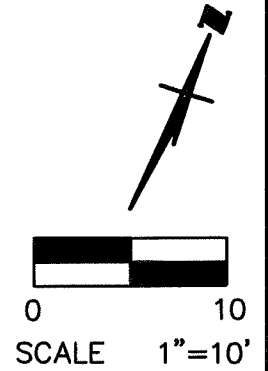
Title County Surveyor

County Surveyor's Comment

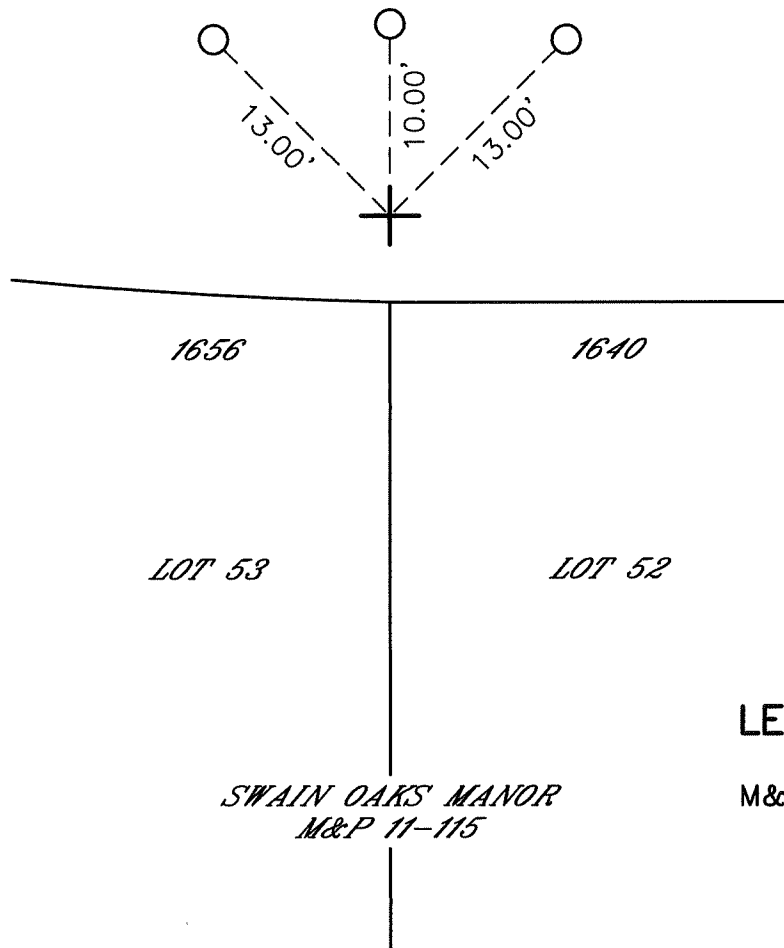


NOTE:

THE INTENT IS TO ESTABLISH
REFERENCE TIES TO FOUND
MONUMENT, NOT TO SPECIFY HOW
THIS MONUMENT RELATES TO
PROPERTY LINES. MAP REFERENCE
ARE GEOGRAPHIC REFERENCES ONLY.



LONGVIEW AVENUE

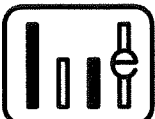


LEGEND:

M&P MAPS AND PLATS,
BOOK-PAGE,
SAN JOAQUIN
COUNTY RECORDS

+ FOUND CHISELED
CROSS IN SIDEWALK,
NO REFERENCE

○ SET PK NAIL WITH
STEEL WASHER
STAMPED L.S. 7600



WONG ENGINEERS, INC.

4578 FEATHER RIVER DRIVE, SUITE A
STOCKTON, CA 95219 (209) 476-0011
APRIL 11, 2024 PAGE 2 OF 2