

# CORNER RECORD

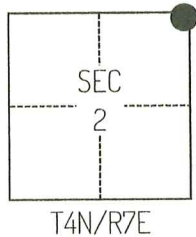
Agency Index CR-24-180  
Document Number \_\_\_\_\_

City of \_\_\_\_\_ County of SAN JOAQUIN, California

Brief Legal Description FOUND MONUMENTS AT THE INTERSECTION OF ELLIOTT AND LIBERTY ROAD, PER PM 26-053 S.J.C.R.

### CORNER TYPE

### COORDINATES (Optional)



- Government Corner     Control  
 Meander                 Property  
 Rancho                       Other

Date of Survey October 4, 2023

N. \_\_\_\_\_ E. \_\_\_\_\_

Elevation \_\_\_\_\_

Units     Metric             U.S. Survey Foot

Horizontal Datum \_\_\_\_\_

Zone \_\_\_\_\_ Epoch Date \_\_\_\_\_

Vertical Datum \_\_\_\_\_

Complies with Public Resources Code §§8801-8819

Complies with Public Resources Code §§8890-8902

PLS Act Ref.:     8765(d)             8771             8773             Other:

Corner/Monument:     Left as found             Established             Rebuilt             Pre-Construction

Found and tagged             Reestablished             Referenced             Post-Construction

Narrative of corner identified and monument as found, set, reset, replaced, or removed:

See sheet #2 for description(s):

THE FOUND MONUMENT(S) SHOWN ON THIS CORNER RECORD WERE FOUND IN THE APPROXIMATE LOCATION OF THE CORNER(S) ON PM 26-053, SAN JOAQUIN RECORDS. I DID NOT VERIFY THE IDENTITY AND VALIDITY OF THE MONUMENT FOUND AS ACTUALLY MARKING THE PROPERTY CORNER.

### SURVEYOR'S STATEMENT

This Corner Record was prepared by me or under my direction in conformance with the Professional Land Surveyors' Act on November 13, 2023.

Signed [Signature] P.L.S. or R.C.E. No. 8489



### COUNTY SURVEYOR'S STATEMENT

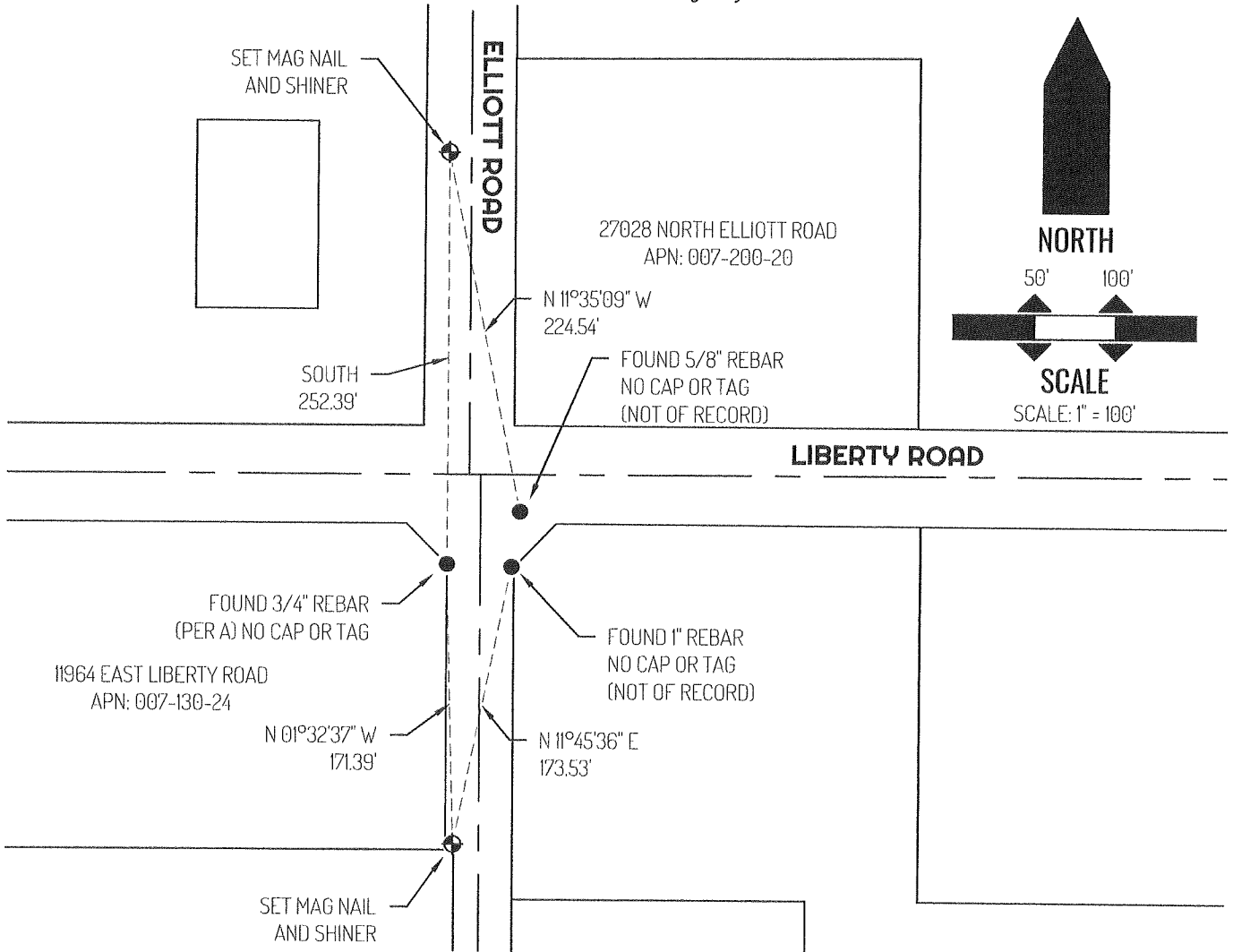
This Corner Record was received April 2, 2024 and examined and filed April 19, 2024.

Signed [Signature] P.L.S. or R.C.E. No. 8657

Title County Surveyor

County Surveyor's Comment





**LEGEND**

●	FOUND MONUMENT AS NOTED
⊕	CONTROL POINT
19969	REFERENCE STREET ADDRESS
PM	PARCEL MAP, SAN JOAQUIN COUNTY RECORDS
APN	TAX ASSESSOR PARCEL NUMBER
—————	LOT LINE
————— —————	RIGHT-OF-WAY CENTERLINE
- - - - -	TIE LINE

**SURVEYOR NOTES**

THIS CORNER RECORD IS BEING FILED TO FULFILL THE PRE-CONSTRUCTION MONUMENT PRESERVATION REQUIREMENTS OF SECTION 8771 OF THE CALIFORNIA BUSINESS AND PROFESSIONS CODE. IT IS NOT THE RESULT OF A FULLY RESOLVED BOUNDARY SURVEY FOR ANY PARCEL OF REAL PROPERTY.

**REFERENCES**

- (A) PARCEL MAP BOOK 26 AT PAGE 53, SAN JOAQUIN COUNTY RECORDS