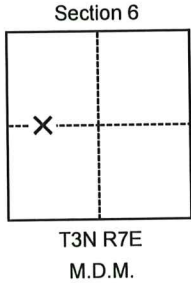


CORNER RECORD

Agency Index CR-24-164
 Document Number _____

City of Lodi County of San Joaquin, California
 Brief Legal Description Intersection of Beckman Rd centerline and W 1/4 section line



CORNER TYPE

- Government Corner Control
 Meander Property
 Rancho Other

Date of Survey February 21, 2024

COORDINATES (Optional)

N. _____ E. _____
 Elevation _____
 Units Metric U.S. Survey Foot
 Horizontal Datum _____
 Zone _____ Epoch Date _____
 Vertical Datum _____
 Complies with Public Resources Code §§8801-8819
 Complies with Public Resources Code §§8890-8902

PLS Act Ref.: 8765(d) 8771 8773 Other:
 Corner/Monument: Left as found Established Rebuilt Pre-Construction
 Found and tagged Reestablished Referenced Post-Construction

Narrative of corner identified and monument as found, set, reset, replaced, or removed:
 See sheet #2 for description(s):

Swing ties as shown on CR 20-14 used to re-establish position of destroyed RR Spike. Witness monument set as shown on sheet 2. Further information available on Survey Request No. 1910-0101 at Caltrans District 10 Surveys Office.

SURVEYOR'S STATEMENT

This Corner Record was prepared by me or under my direction in conformance with
 the Professional Land Surveyors' Act on March 21, 2024
 Signed [Signature] P.L.S. or R.C.E. No. 9531



COUNTY SURVEYOR'S STATEMENT

This Corner Record was received March 21, 2024
 and examined and filed April 1, 2024
 Signed James E. Hart P.L.S. or R.C.E. No. 8657
 Title County Surveyor

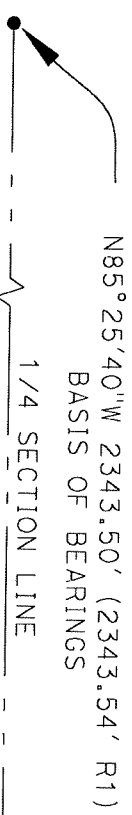


County Surveyor's Comment



NOT TO SCALE

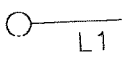
FOUND PK NAIL (R1)



N85°25'40"W 2343.50' (2343.54' R1)
BASIS OF BEARINGS

1/4 SECTION LINE

RR SPIKE (R1)
DESTROYED IN
CONSTRUCTION



L1

FOUND RR SPIKE (R1)

BECKMAN RD

N01°10'00"E (M & R1)
178.14' (178.19' R1)

L2

FOUND RR SPIKE (R1)

- L1 = N01°10'00"E 16.00'
- L2 = N85°25'40"W 1293.83' (1293.90' R1)
- (R1) = 22-PM-43A
- = SET 2-1/4" CALIF. DEPT. OF
TRANSPORTATION BRASS DISC
PUNCHED & STAMPED "CL 1/4
16 FT REF" ON PROLONGATION
OF BECKMAN RD CENTERLINE
- PM = PARCEL MAP,
SAN JOAQUIN COUNTY RECORDS
- CR = CORNER RECORD,
SAN JOAQUIN COUNTY RECORDS