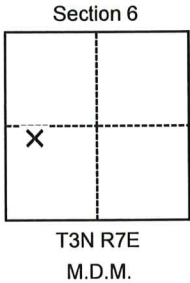


CORNER RECORD

Agency Index CR-24-163
Document Number _____

City of Lodi County of San Joaquin, California
Brief Legal Description City of Lodi Benchmark 398 Reset



CORNER TYPE

- Government Corner Control
 Meander Property
 Rancho Other

Date of Survey January 17, 2024

COORDINATES (Optional)

N. _____ E. _____
 Elevation _____
 Units Metric U.S. Survey Foot
 Horizontal Datum _____
 Zone _____ Epoch Date _____
 Vertical Datum NAVD88
 Complies with Public Resources Code §§8801-8819
 Complies with Public Resources Code §§8890-8902

PLS Act Ref.: 8765(d) 8771 8773 Other:
 Corner/Monument: Left as found Established Rebuilt Pre-Construction
 Found and tagged Reestablished Referenced Post-Construction

Narrative of corner identified and monument as found, set, reset, replaced, or removed:
 See sheet #2 for description(s):

City of Lodi Benchmark 398 destroyed in construction. Set 2-1/4" CALIF DEPT OF TRANSPORTATION Brass Disc Stamped "COL BM 398 RESET" in top of curb near original location. Ran differential levels to set mark from ties shown on Pre-Construction Corner Record 20-13. Established elevations on ties and new mark are the result of CR 20-13 pre-construction tie elevation deltas applied to published NAVD88 elevation on BM 398 (58.592') per City of Lodi Benchmarks book revision date 02/15/18. Further information available on Survey Request No. 1910-0101 at Caltrans District 10 Surveys Office.

SURVEYOR'S STATEMENT

This Corner Record was prepared by me or under my direction in conformance with
 the Professional Land Surveyors' Act on March 21, 2024
 Signed [Signature] P.L.S. or R.C.E. No. 9531

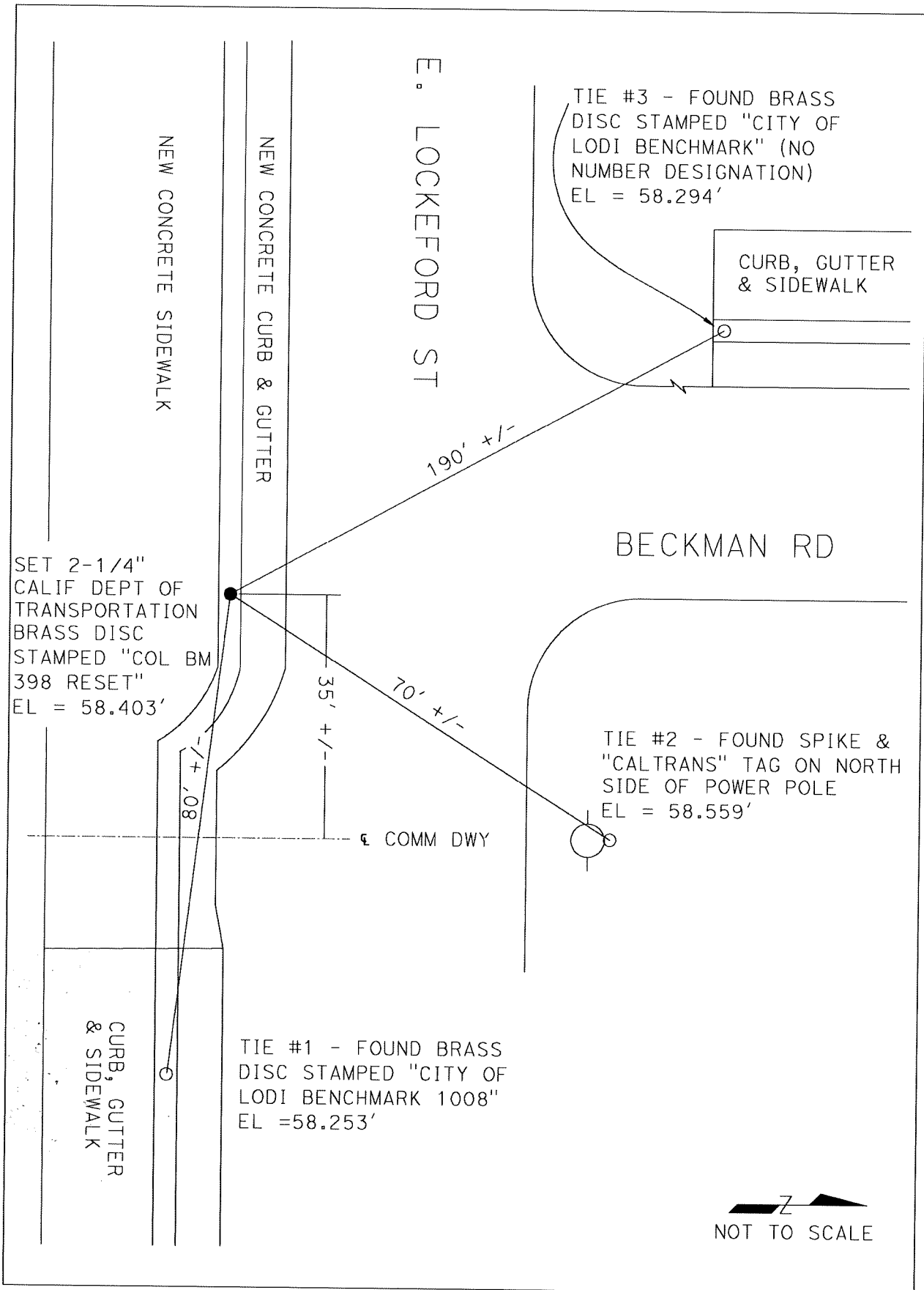


COUNTY SURVEYOR'S STATEMENT

This Corner Record was received March 21, 2024
 and examined and filed April 1, 2024
 Signed James E. Hart P.L.S. or R.C.E. No. 8657
 Title County Surveyor



County Surveyor's Comment



E. LOCKEFORD ST

NEW CONCRETE SIDEWALK

NEW CONCRETE CURB & GUTTER

TIE #3 - FOUND BRASS DISC STAMPED "CITY OF LODI BENCHMARK" (NO NUMBER DESIGNATION) EL = 58.294'

CURB, GUTTER & SIDEWALK

190' +/-

BECKMAN RD

SET 2-1/4" CALIF DEPT OF TRANSPORTATION BRASS DISC STAMPED "COL BM 398 RESET" EL = 58.403'

35' +/-

70' +/-

TIE #2 - FOUND SPIKE & "CALTRANS" TAG ON NORTH SIDE OF POWER POLE EL = 58.559'

COMM DWY

-1+ .08

CURB, GUTTER & SIDEWALK

TIE #1 - FOUND BRASS DISC STAMPED "CITY OF LODI BENCHMARK 1008" EL = 58.253'

NOT TO SCALE