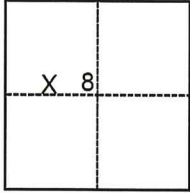


# CORNER RECORD

Agency Index CR-24-158  
 Document Number \_\_\_\_\_

City of Stockton County of San Joaquin, California  
 Brief Legal Description Parcel A of P.M. 12-123, S.J.C.R.

### CORNER TYPE



- Government Corner     Control  
 Meander                     Property  
 Rancho                          Other

Date of Survey February 14, 2024

### COORDINATES (Optional)

N. \_\_\_\_\_ E. \_\_\_\_\_  
 Elevation \_\_\_\_\_  
 Units  Metric  U.S. Survey Foot  
 Horizontal Datum \_\_\_\_\_  
 Zone \_\_\_\_\_ Epoch Date \_\_\_\_\_  
 Vertical Datum \_\_\_\_\_  
 Complies with Public Resources Code §§8801-8819  
 Complies with Public Resources Code §§8890-8902

T.2N., R.6E., M.D.B.&M.

PLS Act Ref.:  8765(d)     8771     8773     Other:  
 Corner/Monument:  Left as found     Established     Rebuilt     Pre-Construction  
 Found and tagged     Reestablished     Referenced     Post-Construction

Narrative of corner identified and monument as found, set, reset, replaced, or removed:  
 See sheet #2 for description(s):

### SURVEYOR'S STATEMENT

This Corner Record was prepared by me or under my direction in conformance with  
 the Professional Land Surveyors' Act on March 18, 2024  
 Signed Joe Murphy (P.L.S.) or R.C.E. No. 7269

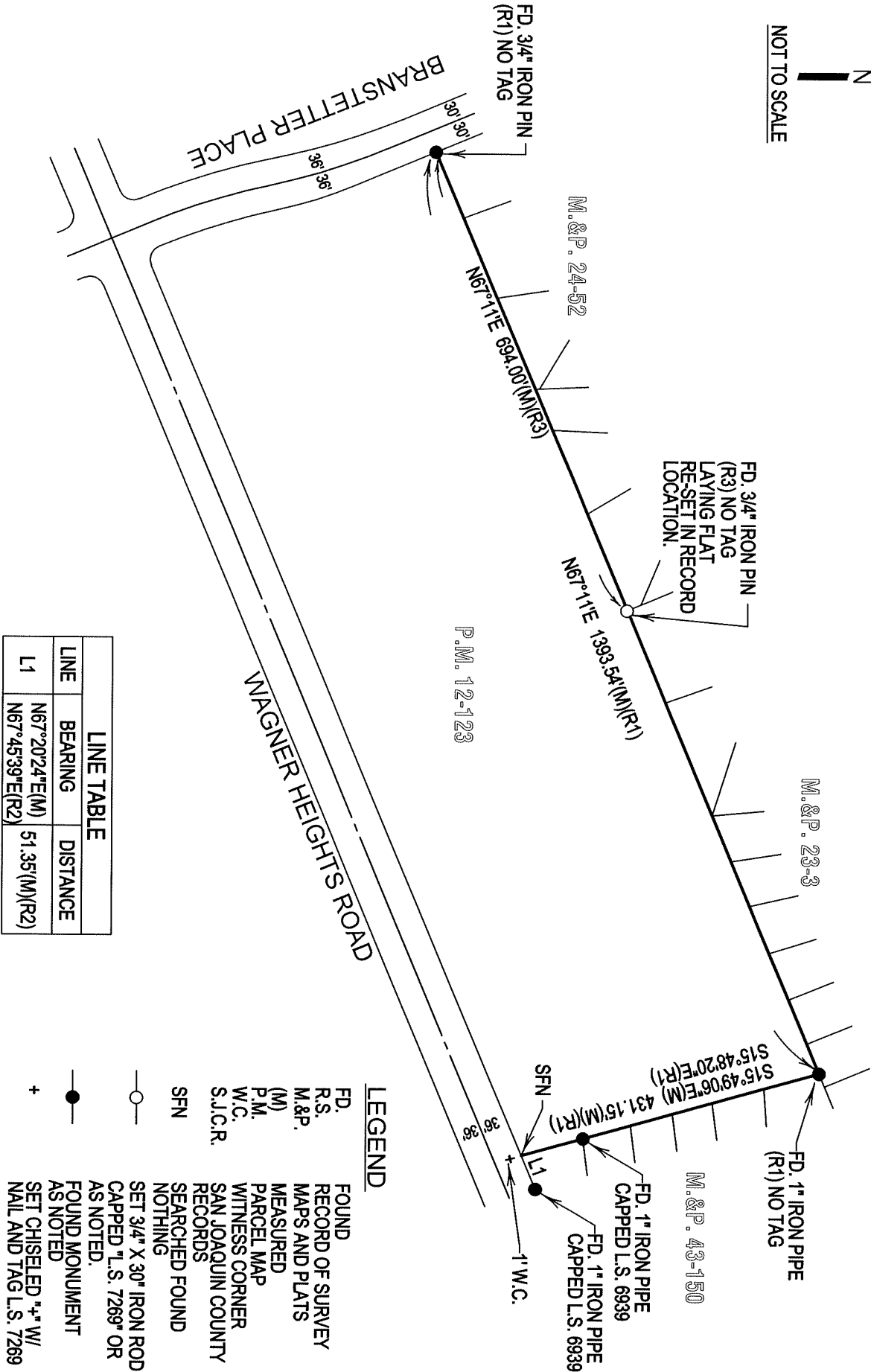


### COUNTY SURVEYOR'S STATEMENT

This Corner Record was received March 20, 2024  
 and examined and filed March 29, 2024  
 Signed James E. Hart P.L.S. or R.C.E. No. 8657  
 Title County Surveyor



County Surveyor's Comment



LINE TABLE		
LINE	BEARING	DISTANCE
L1	N67°20'24"E(M)	51.35'(M)(R2)
	N67°45'39"E(R2)	

- LEGEND**
- FD. FOUND
  - R.S. RECORD OF SURVEY
  - M.&P. MAPS AND PLATS
  - (M) MEASURED
  - P.M. PARCEL MAP
  - W.C. WITNESS CORNER
  - S.J.C.R. SAN JOAQUIN COUNTY RECORDS
  - SFN SEARCHED FOUND NOTHING
  - SET 3/4" X 30" IRON ROD CAPPED "L.S. 7269" OR AS NOTED.
  - FOUND MONUMENT AS NOTED
  - + SET CHISELED "+\" W/ NAIL AND TAG L.S. 7269
- REFERENCES**
- (R1) P.M. 12-123, S.J.C.R.
  - (R2) M.&P. 43-150, S.J.C.R.
  - (R3) M.&P. 24-52, S.J.C.R.