

CORNER RECORD

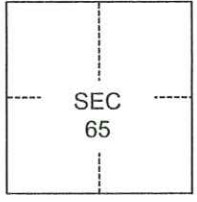
Agency Index CR-24-127
Document Number _____

City of _____ County of SAN JOAQUIN, California

Brief Legal Description FOUND MONUMENT AT THE CORNER OF WEBER AVENUE AND SOUTH CARDINAL AVENUE, BOOK 13 OF MAPS AND PLATS PAGE 46.

CORNER TYPE

COORDINATES (Optional)



C.M. WEBER
GRANT

- Government Corner
- Meander
- Rancho
- Control
- Property
- Other

Date of Survey January 12, 2023

N. _____ E. _____

Elevation _____

Units Metric U.S. Survey Foot

Horizontal Datum _____

Zone _____ Epoch Date _____

Vertical Datum _____

- Complies with Public Resources Code §§8801-8819
- Complies with Public Resources Code §§8890-8902

- PLS Act Ref.: 8765(d) 8771 8773 Other:
- Corner/Monument: Left as found Established Rebuilt Pre-Construction
- Found and tagged Reestablished Referenced Post-Construction

Narrative of corner identified and monument as found, set, reset, replaced, or removed:

- See sheet #2 for description(s):

SURVEYOR'S STATEMENT

This Corner Record was prepared by me or under my direction in conformance with
 the Professional Land Surveyors' Act on March 6, 2023
 Signed [Signature] P.L.S. or R.C.E. No. 8489

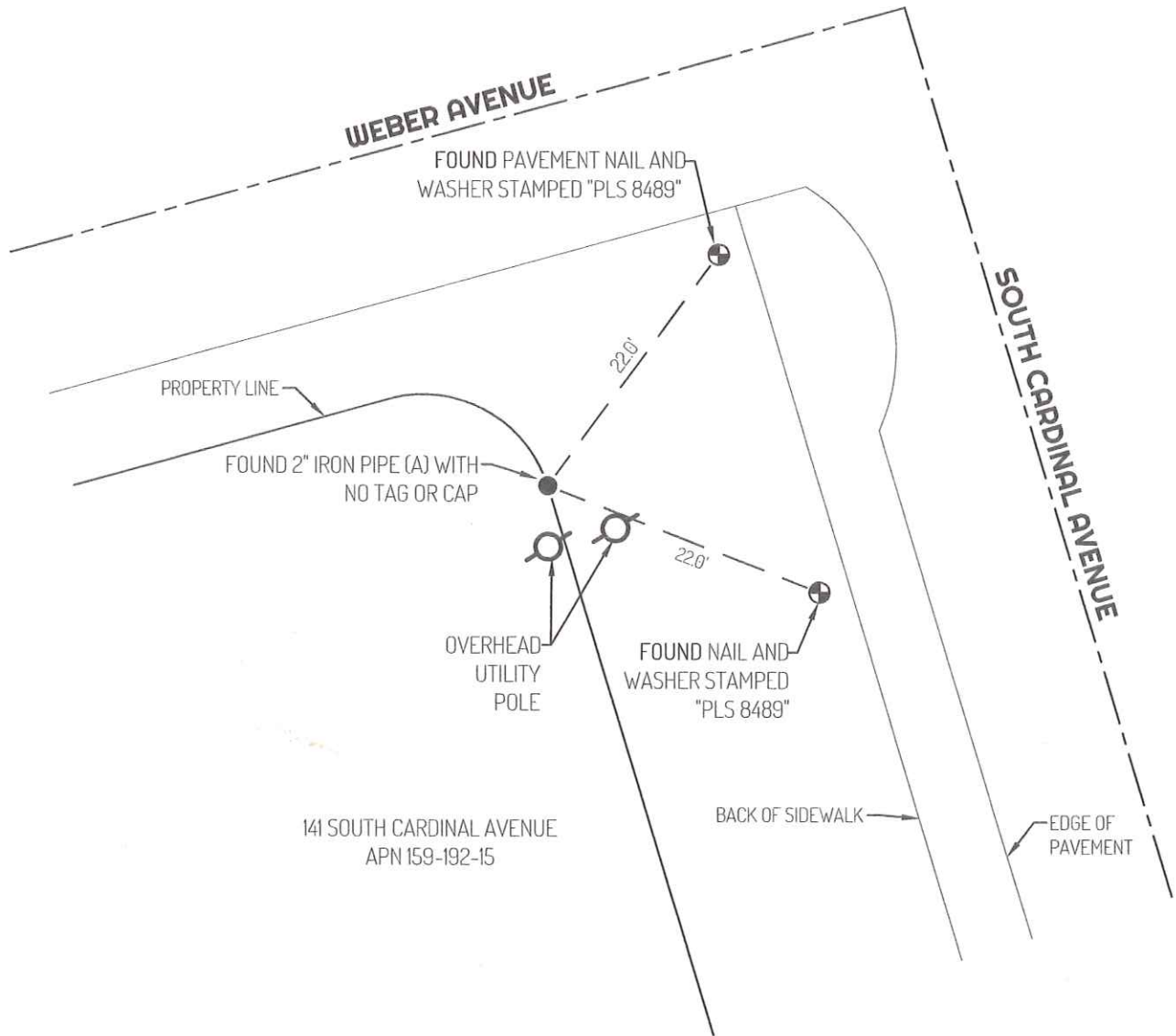


COUNTY SURVEYOR'S STATEMENT

This Corner Record was received February 16, 2024
 and examined and filed February 29, 2024
 Signed James E Hart P.L.S. or R.C.E. No. 8657
 Title County Surveyor



County Surveyor's Comment



LEGEND

- FOUND 2" IRON PIPE (A) NO CAP OR TAG
- ⊕ FOUND CONTROL POINT
- 955 REFERENCE STREET ADDRESS
- APN ASSESSOR'S PARCEL NUMBER
- MP MAPS AND PLATS, SAN JOAQUIN COUNTY RECORDS

LINETYPES

- CENTERLINE
- EDGE OF PAVEMENT
- BACK OF SIDEWALK
- - - - - TIE LINE

REFERENCES

(A) MP 13-046 AND CORNER RECORD 22-298, SAN JOAQUIN COUNTY SURVEYOR'S RECORDS

