

# CORNER RECORD

Agency Index CR-24-126  
Document Number \_\_\_\_\_

City of \_\_\_\_\_ County of SAN JOAQUIN, California

Brief Legal Description FOUND MONUMENT AT THE CORNER OF STEWART STREET AND SANGUINETTI LANE, BOOK 17 MAPS AND PLATS PAGE 22.

### CORNER TYPE

### COORDINATES (Optional)



C.M. WEBER  
GRANT

- Government Corner
- Meander
- Rancho
- Control
- Property
- Other

Date of Survey January 12, 2023

N. \_\_\_\_\_ E. \_\_\_\_\_

Elevation \_\_\_\_\_

Units  Metric  U.S. Survey Foot

Horizontal Datum \_\_\_\_\_

Zone \_\_\_\_\_ Epoch Date \_\_\_\_\_

Vertical Datum \_\_\_\_\_

Complies with Public Resources Code §§8801-8819

Complies with Public Resources Code §§8890-8902

PLS Act Ref.:  8765(d)  8771  8773  Other:

Corner/Monument:  Left as found  Established  Rebuilt  Pre-Construction

Found and tagged  Reestablished  Referenced  Post-Construction

Narrative of corner identified and monument as found, set, reset, replaced, or removed:

See sheet #2 for description(s):

### SURVEYOR'S STATEMENT

This Corner Record was prepared by me or under my direction in conformance with the Professional Land Surveyors' Act on March 6, 2023.  
Signed [Signature] P.L.S. or R.C.E. No. 8489

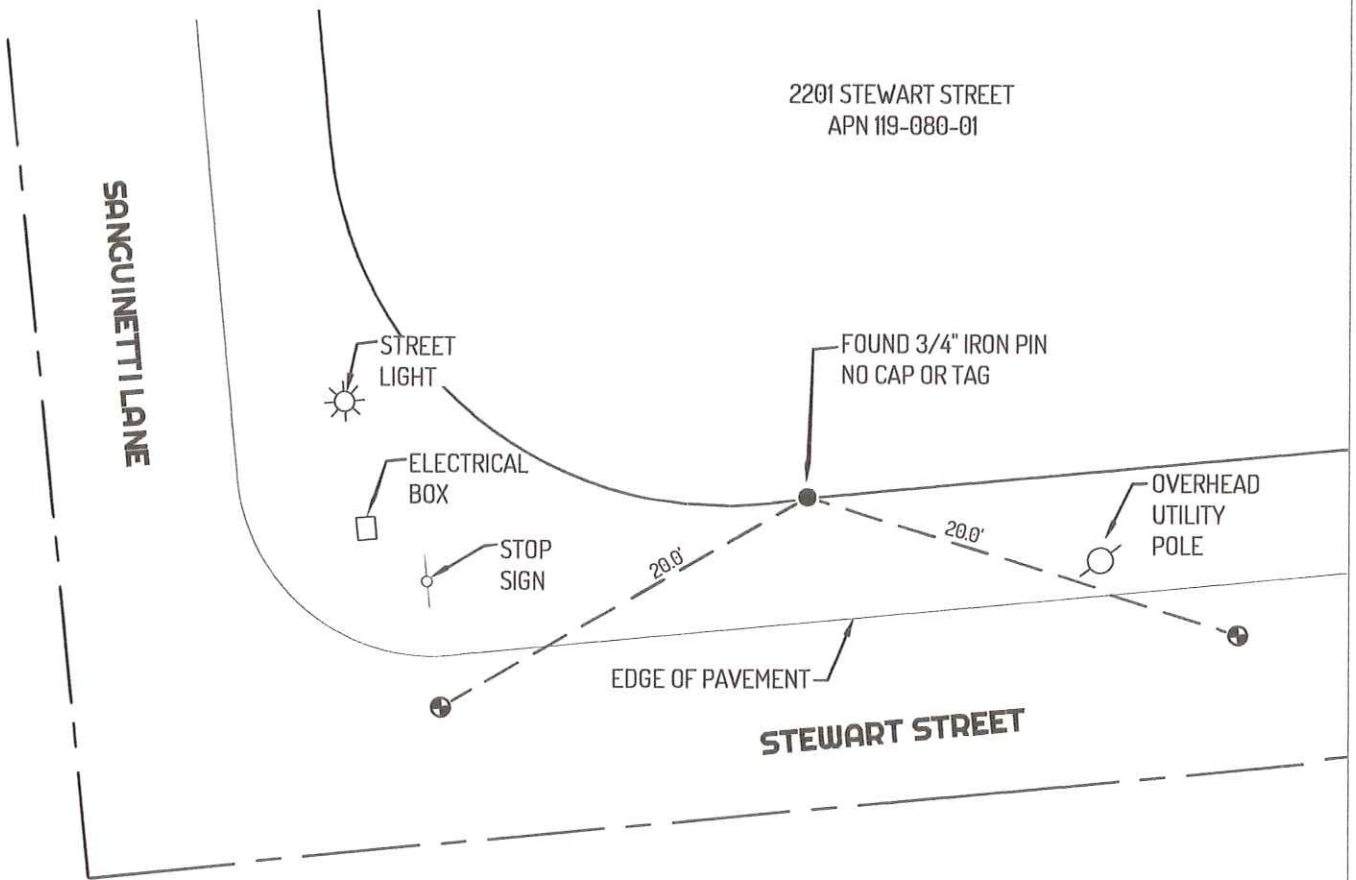


### COUNTY SURVEYOR'S STATEMENT

This Corner Record was received February 16, 2024 and examined and filed February 29, 2024.  
Signed James E Hart P.L.S. or R.C.E. No. 8657  
Title County Surveyor



County Surveyor's Comment



**LEGEND**

- FOUND 3/4" IRON PIN (A) NO CAP OR TAG
- ⊕ FOUND PAVEMENT NAIL AND WASHER STAMPED LS 8489
- 435 REFERENCE STREET ADDRESS
- APN ASSESSOR'S PARCEL NUMBER

**LINETYPES**

- CENTERLINE
- EDGE OF PAVEMENT
- PROPERTY LINE
- - - TIE LINE

**REFERENCES**

(A) 17-MP-22 AND CORNER RECORD 22-297, SAN JOAQUIN COUNTY SURVEYOR'S RECORDS

