

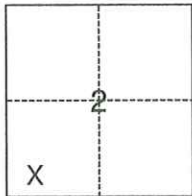
CORNER RECORD

Agency Index CR-24-123
Document Number _____

City of LODI County of SAN JOAQUIN, California
Brief Legal Description FOUND MONUMENTS ON PINEWOOD COURT

CORNER TYPE

COORDINATES (Optional)



- ☐ Government Corner ☐ Control
☐ Meander ☒ Property
☐ Rancho ☐ Other

N. _____ E. _____

Elevation _____

Units ☐ Metric ☒ U.S. Survey Foot

Horizontal Datum _____

Zone _____ Epoch Date _____

Vertical Datum _____

☐ Complies with Public Resources Code §§8801-8819

☐ Complies with Public Resources Code §§8890-8902

Date of Survey November 23, 2022

T3N/R6E

PLS Act Ref.: ☐ 8765(d) ☒ 8771 ☐ 8773 ☐ Other:

Corner/
Monument: ☒ Left as found ☐ Established ☐ Rebuilt ☐ Pre-Construction
☐ Found and tagged ☐ Reestablished ☒ Referenced ☒ Post-Construction

Narrative of corner identified and monument as found, set, reset, replaced, or removed:

☒ See sheet #2 for description(s):

SURVEYOR'S STATEMENT

This Corner Record was prepared by me or under my direction in conformance with

the Professional Land Surveyors' Act on December 15, 2022

Signed Scott L. Blake P.L.S. or R.C.E. No. 8489



COUNTY SURVEYOR'S STATEMENT

This Corner Record was received February 16, 2024

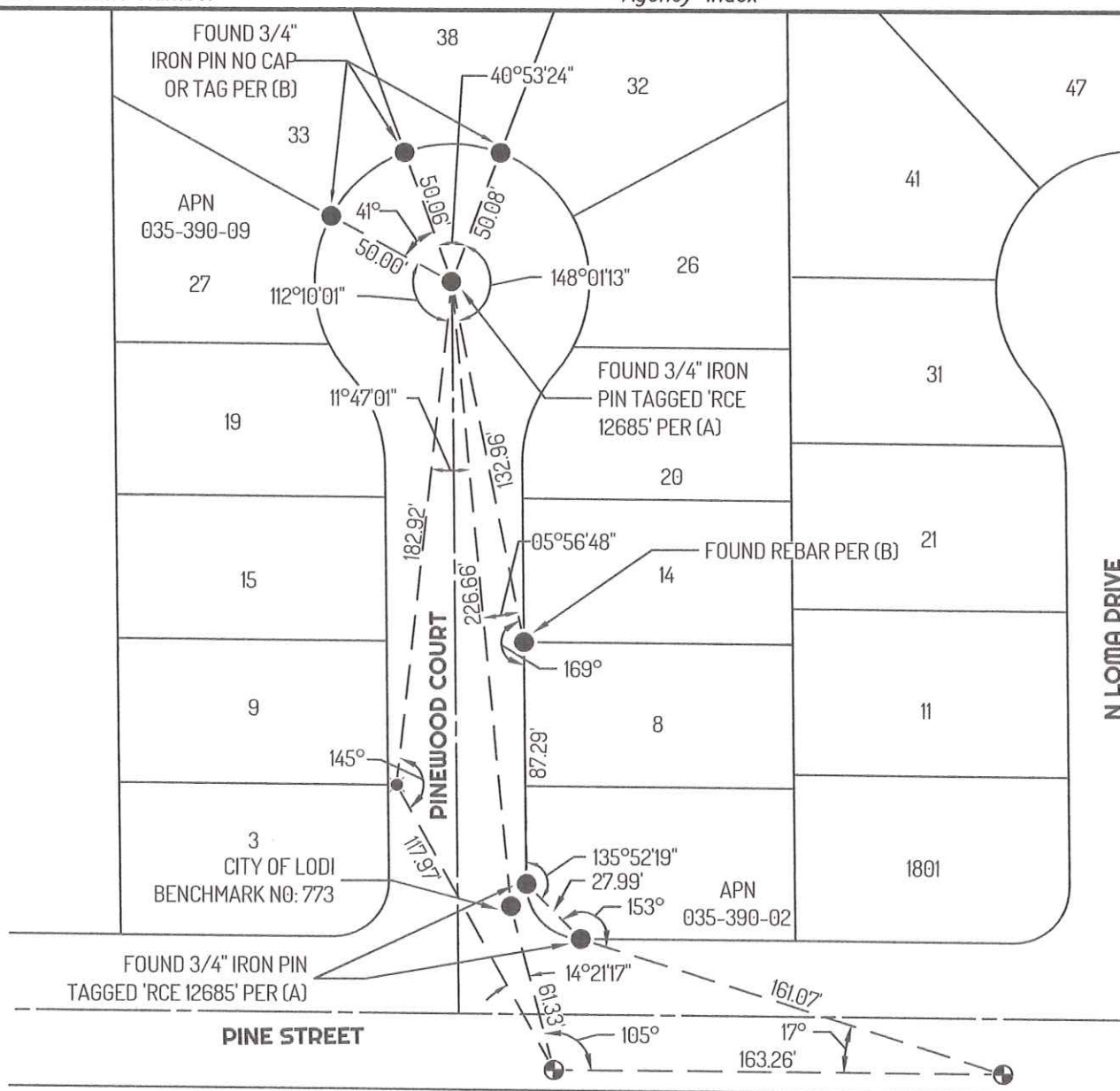
and examined and filed February 29, 2024

Signed James E. Hart P.L.S. or R.C.E. No. 8657

Title County Surveyor

County Surveyor's Comment





LEGEND

- | | |
|-----|--|
| ● | FOUND MONUMENT AS NOTED |
| ⊕ | SET CONTROL POINT. 60 D NAIL. |
| ⦿ | FOUND CUT "X" , PER (B) |
| 435 | REFERENCE STREET ADDRESS |
| APN | ASSESSOR'S PARCEL NUMBER |
| MP | MAPS AND PLATS, SAN JOAQUIN COUNTY RECORDS |

LINETYPE

- _____ TIE LINE
 _____ LOT LINE
 _____ CENTERLINE

REFERENCES

- (A) 25-MP-124
(B) CORNER RECORD 22-290, SAN JOAQUIN COUNTY SURVEYOR'S RECORDS

