

# CORNER RECORD

Agency Index CR-24-116

Document Number \_\_\_\_\_

City of \_\_\_\_\_ County of SAN JOAQUIN, California

Brief Legal Description FOUND MONUMENT NEAR APN's 085-210-36 AND 37 PER CR 19-095, S.J.C.S.R.

### CORNER TYPE

### COORDINATES (Optional)



T2N/R7E

- Government Corner     Control  
 Meander                     Property  
 Rancho                          Other

N. \_\_\_\_\_ E. \_\_\_\_\_

Elevation \_\_\_\_\_

Units     Metric             U.S. Survey Foot

Horizontal Datum \_\_\_\_\_

Zone \_\_\_\_\_ Epoch Date \_\_\_\_\_

Date of Survey November 23, 2022

Vertical Datum \_\_\_\_\_

Complies with Public Resources Code §§8801-8819

Complies with Public Resources Code §§8890-8902

PLS Act Ref.:     8765(d)             8771             8773             Other:

Corner/Monument:     Left as found             Established             Rebuilt             Pre-Construction

Found and tagged             Reestablished             Referenced             Post-Construction

Narrative of corner identified and monument as found, set, reset, replaced, or removed:

See sheet #2 for description(s):

### SURVEYOR'S STATEMENT

This Corner Record was prepared by me or under my direction in conformance with

the Professional Land Surveyors' Act on December 15, 2022

Signed *Scott L. Blake* P.L.S. or R.C.E. No. 8489



### COUNTY SURVEYOR'S STATEMENT

This Corner Record was received February 13, 2024

and examined and filed February 27, 2024.

Signed *James E. Hart* P.L.S. or R.C.E. No. 8657

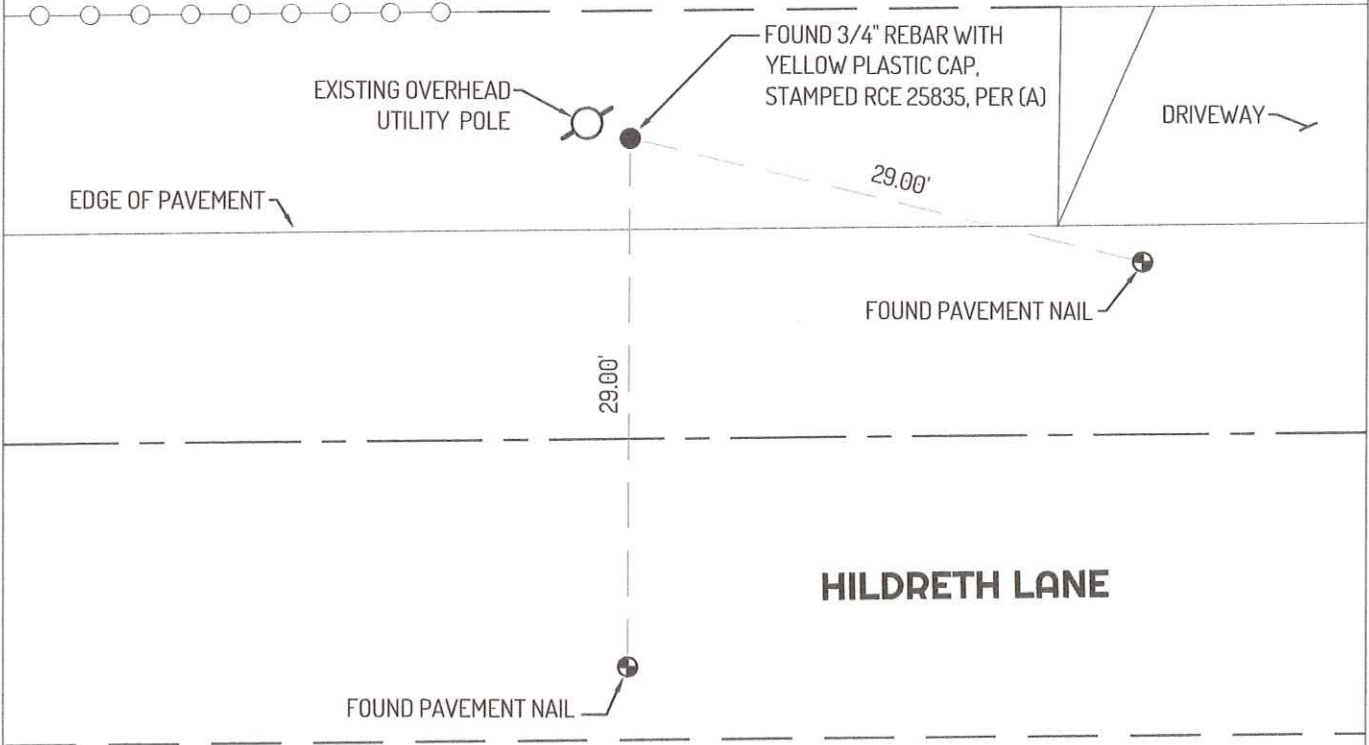
Title County Surveyor

County Surveyor's Comment



4919  
APN  
085-210-36

4929 HILDRETH LN.  
APN  
085-210-37



4950  
APN  
085-300-54

**LEGEND**

- FOUND CONCRETE MONUMENT, PER (A)
- ⊕ FOUND CONTROL POINT
- 4929 STREET ADDRESS

APN ASSESSOR'S PARCEL NUMBER  
S.J.C.S.R. SAN JOAQUIN COUNTY SURVEYOR'S RECORDS

**LINETYPES**

- — — — — CENTERLINE
- ○ ○ ○ ○ FENCE
- — — — — RIGHT-OF-WAY SIDELINE
- — — — — TIE LINE

**REFERENCE**

- (A) CORNER RECORD 19-095, S.J.C.S.R.
- CORNER RECORD 22-295, S.J.C.S.R.

