

CORNER RECORD

Agency Index CR-24-115
Document Number _____

City of _____ County of SAN JOAQUIN, California

Brief Legal Description FOUND MONUMENT ON HILDRETH LANE NEAR APN 085-120-03.
NO MAPS AVAILABLE.

CORNER TYPE

COORDINATES (Optional)



T2N/R7E

- Government Corner
- Meander
- Rancho
- Control
- Property
- Other

Date of Survey November 23, 2022

N. _____ E. _____

Elevation _____

Units Metric U.S. Survey Foot

Horizontal Datum _____

Zone _____ Epoch Date _____

Vertical Datum _____

Complies with Public Resources Code §§8801-8819

Complies with Public Resources Code §§8890-8902

PLS Act Ref.: 8765(d) 8771 8773 Other:

Corner/Monument: Left as found Established Rebuilt Pre-Construction

Found and tagged Reestablished Referenced Post-Construction

Narrative of corner identified and monument as found, set, reset, replaced, or removed:

See sheet #2 for description(s):

SURVEYOR'S STATEMENT

This Corner Record was prepared by me or under my direction in conformance with
the Professional Land Surveyors' Act on December 15, 2022
Signed Scott L. Blake P.L.S. or R.C.E. No. 8489

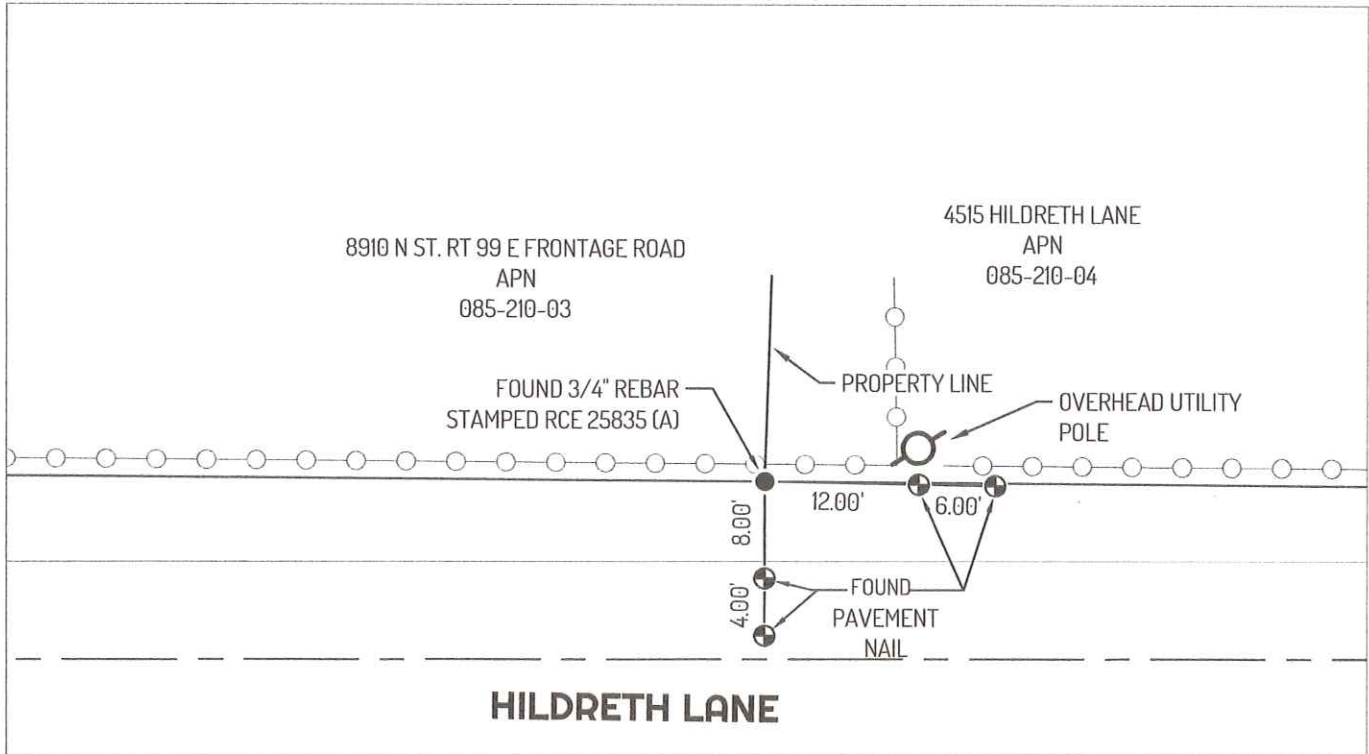


COUNTY SURVEYOR'S STATEMENT

This Corner Record was received February 13, 2024
and examined and filed February 27, 2024.
Signed James E. Hart P.L.S. or R.C.E. No. 8657
Title County Surveyor



County Surveyor's Comment



HILDRETH LANE

4416 HILDRETH LANE
 APN
 085-300-01

LEGEND

- FOUND CONCRETE MONUMENT, PER (A)
- ⊕ FOUND CONTROL POINT
- 435 REFERENCE STREET ADDRESS
- APN ASSESSOR'S PARCEL NUMBER

LINETYPES

- - - CENTERLINE
- EDGE OF PAVEMENT
- ○ ○ FENCE
- PROPERTY LINE
- TIE LINE

REFERENCES

(A) CORNER RECORD 22-293, SAN JOAQUIN COUNTY SURVEYOR'S RECORDS

