

# CORNER RECORD

Agency Index CR-24-114  
Document Number \_\_\_\_\_

City of \_\_\_\_\_ County of SAN JOAQUIN, California

Brief Legal Description FOUND MONUMENT PER RECORD OF SURVEY IN BOOK 7 OF SURVEYS PAGE 201.

### CORNER TYPE

### COORDINATES (Optional)



T2N/R7E

- Government Corner
- Meander
- Rancho
- Control
- Property
- Other

Date of Survey November 23, 2022

N. \_\_\_\_\_ E. \_\_\_\_\_

Elevation \_\_\_\_\_

Units  Metric  U.S. Survey Foot

Horizontal Datum \_\_\_\_\_

Zone \_\_\_\_\_ Epoch Date \_\_\_\_\_

Vertical Datum \_\_\_\_\_

Complies with Public Resources Code §§8801-8819

Complies with Public Resources Code §§8890-8902

PLS Act Ref.:  8765(d)  8771  8773  Other:

Corner/Monument:  Left as found  Established  Rebuilt  Pre-Construction

Found and tagged  Reestablished  Referenced  Post-Construction

Narrative of corner identified and monument as found, set, reset, replaced, or removed:

See sheet #2 for description(s):

### SURVEYOR'S STATEMENT

This Corner Record was prepared by me or under my direction in conformance with

the Professional Land Surveyors' Act on December 15, 2022

Signed [Signature] P.L.S. or R.C.E. No. 8489



### COUNTY SURVEYOR'S STATEMENT

This Corner Record was received February 13, 2024

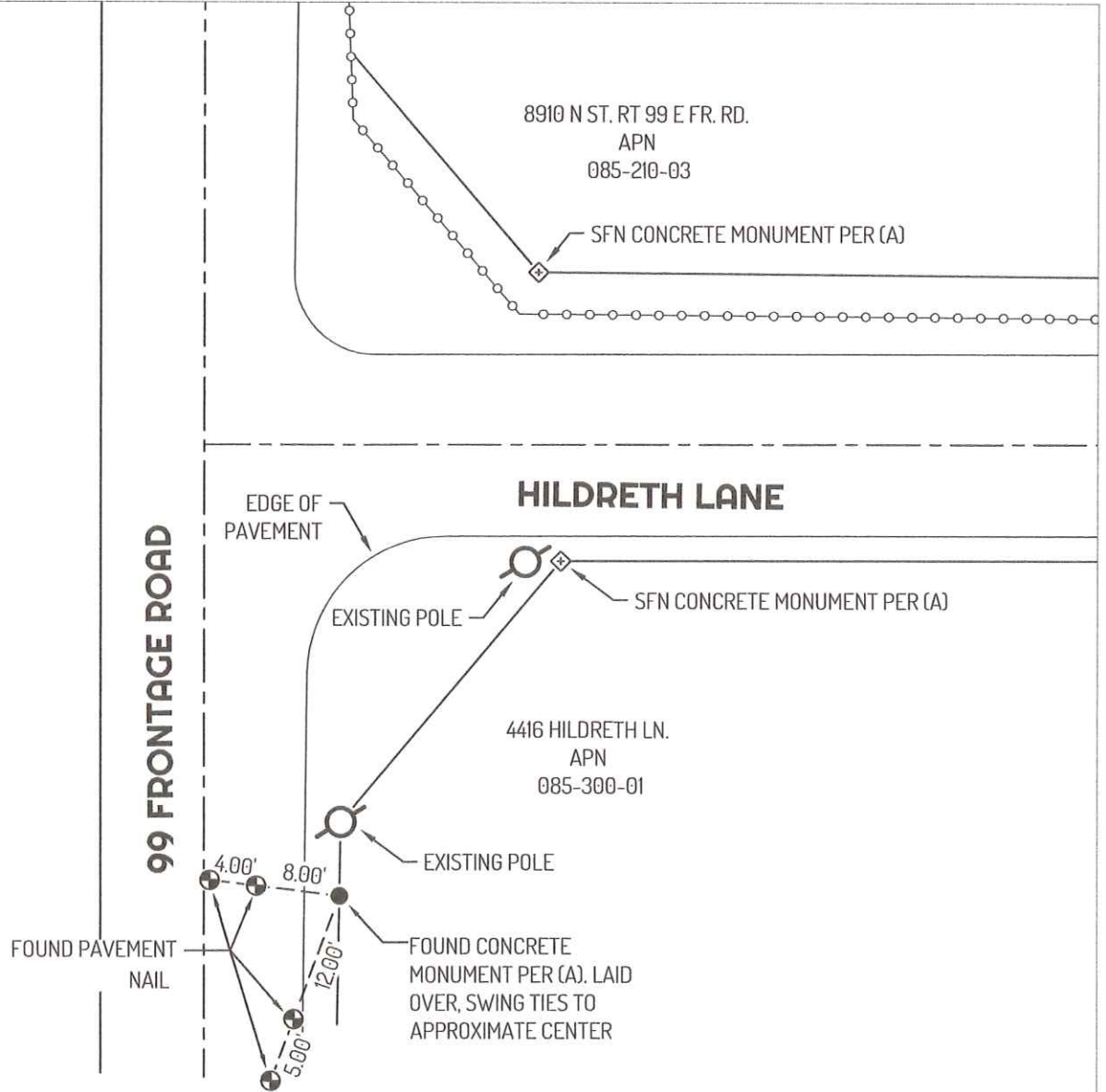
and examined and filed February 27, 2024

Signed [Signature] P.L.S. or R.C.E. No. 8657

Title County Surveyor

County Surveyor's Comment





**LEGEND**

- FOUND CONCRETE MONUMENT, PER (A)
- ⊕ FOUND CONTROL POINT
- ⊠ SEARCHED FOUND NOTHING
- 435 REFERENCE STREET ADDRESS
- APN ASSESSOR'S PARCEL NUMBER

**LINETYPES**

- - - CENTERLINE
- EDGE OF PAVEMENT
- ○ ○ ○ ○ FENCE
- PROPERTY LINE
- - - - TIE LINE

**REFERENCES**

- (A) RECORD OF SURVEYS 7-201, SAN JOAQUIN COUNTY RECORDS
- CORNER RECORD 22-292, SAN JOAQUIN COUNTY SURVEYOR'S RECORDS

