

CORNER RECORD

Agency Index CR-24-112
Document Number _____

City of _____ County of SAN JOAQUIN, California

Brief Legal Description FOUND MONUMENTS AT THE INTERSECTION OF CARLIN ROAD AND ROBERTS ROAD.

CORNER TYPE

COORDINATES (Optional)



T1S/R6E

- Government Corner
- Meander
- Rancho
- Control
- Property
- Other

N. _____ E. _____

Elevation _____

Units Metric U.S. Survey Foot

Horizontal Datum _____

Zone _____ Epoch Date _____

Vertical Datum _____

Complies with Public Resources Code §§8801-8819

Complies with Public Resources Code §§8890-8902

PLS Act Ref.: 8765(d) 8771 8773 Other:

Corner/Monument: Left as found Established Rebuilt Pre-Construction

Found and tagged Reestablished Referenced Post-Construction

Narrative of corner identified and monument as found, set, reset, replaced, or removed:

See sheet #2 for description(s):

SURVEYOR'S STATEMENT

This Corner Record was prepared by me or under my direction in conformance with

the Professional Land Surveyors' Act on December 15, 2022

Signed [Signature] P.L.S. or R.C.E. No. 8489



COUNTY SURVEYOR'S STATEMENT

This Corner Record was received February 13, 2024

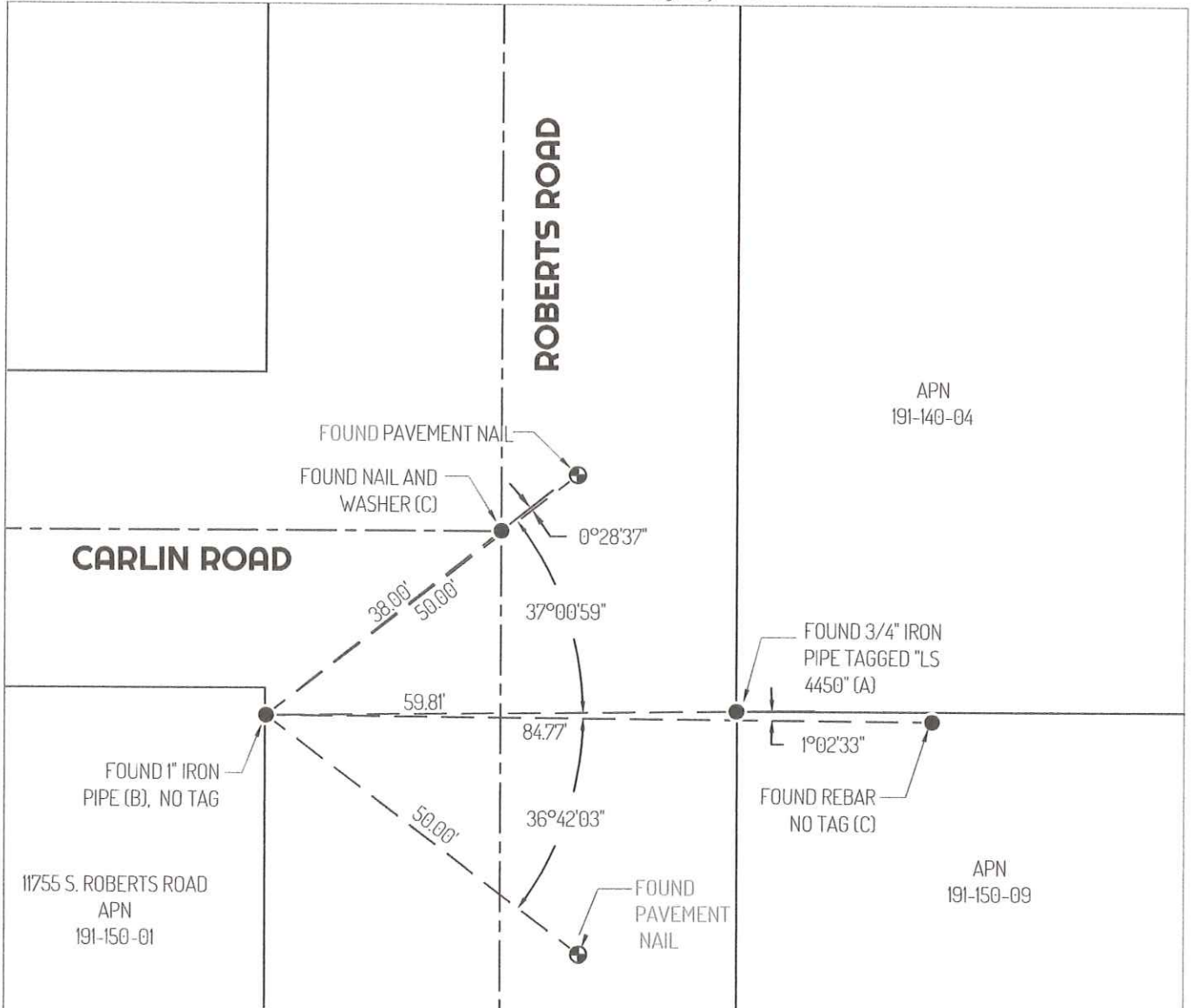
and examined and filed February 27, 2024

Signed James E Hart P.L.S. or R.C.E. No. 8657

Title County Surveyor

County Surveyor's Comment





LEGEND

- FOUND MONUMENT
- ⊙— FOUND CONTROL POINTS
- APN ASSESSOR'S PARCEL NUMBER
- PM PARCEL MAP
- RS RECORD OF SURVEY
- S.J.C.R. SAN JOAQUIN COUNTY RECORDS

LINETYPE

- - - CENTERLINE
- PROPERTY LINE
- - - TIE LINES

REFERENCES

- (A) 25-PM-35A, S.J.C.R.
- (B) 21-RS-III, S.J.C.R.
- (C) CORNER RECORD 22-291, SAN JOAQUIN COUNTY SURVEYOR'S RECORDS

