

CORNER RECORD

Agency Index CR-24-111

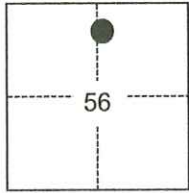
Document Number _____

City of _____ County of SAN JOAQUIN, California

Brief Legal Description FOUND MONUMENT AT SOUTHWEST CORNER OF PARCEL A PER RECORD OF SURVEY IN BOOK 23 OF SURVEYS PAGE 71.

CORNER TYPE

COORDINATES (Optional)



- Government Corner
- Meander
- Rancho
- Control
- Property
- Other

N. _____ E. _____

Elevation _____

Units Metric U.S. Survey Foot

Horizontal Datum _____

Zone _____ Epoch Date _____

Vertical Datum _____

Complies with Public Resources Code §§8801-8819

Complies with Public Resources Code §§8890-8902

Date of Survey November 23, 2022

C.M. WEBER
GRANT

PLS Act Ref.: 8765(d) 8771 8773 Other:

Corner/Monument: Left as found Established Rebuilt Pre-Construction

Found and tagged Reestablished Referenced Post-Construction

Narrative of corner identified and monument as found, set, reset, replaced, or removed:

See sheet #2 for description(s):

SURVEYOR'S STATEMENT

This Corner Record was prepared by me or under my direction in conformance with the Professional Land Surveyors' Act on December 15, 2022

Signed [Signature] P.L.S. or R.C.E. No. 8489



COUNTY SURVEYOR'S STATEMENT

This Corner Record was received February 13, 2024

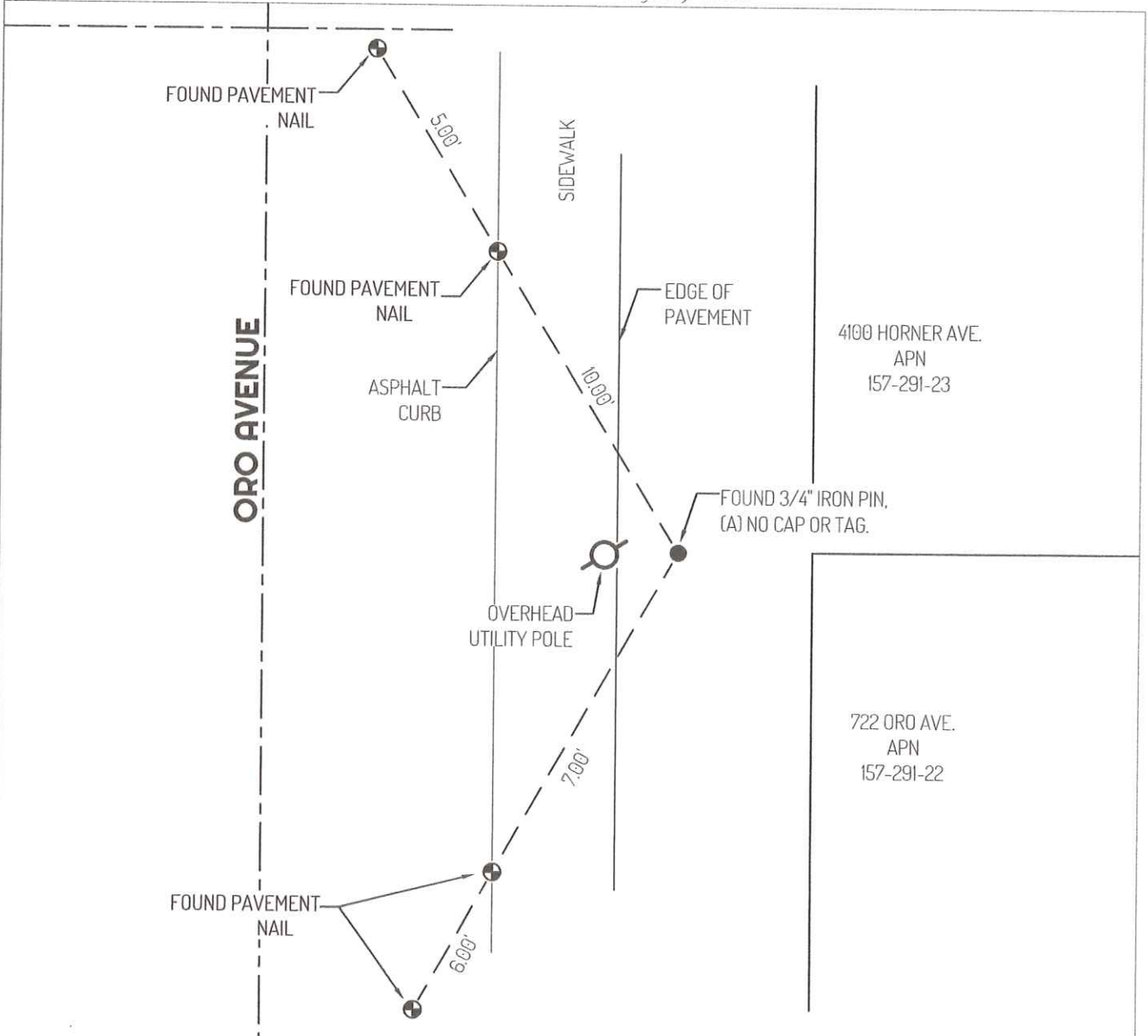
and examined and filed February 27, 2024.

Signed James E. Hart P.L.S. or R.C.E. No. 8657

Title County Surveyor

County Surveyor's Comment





LEGEND

- FOUND 3/4" IRON PIN, PER (A)
- ⊕— FOUND CONTROL POINT
- 435 REFERENCE STREET ADDRESS
- APN ASSESSOR'S PARCEL NUMBER
- RS RECORD OF SURVEYS SAN JOAQUIN COUNTY RECORDS

LINETYPES

- - - CENTERLINE
- EDGE OF PAVEMENT
- PROPERTY LINE
- TIE LINE

REFERENCE

(A) RS 23-071 AND CORNER RECORD 22-262, SAN JOAQUIN COUNTY SURVEYOR'S RECORDS

