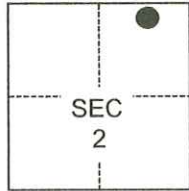


CORNER RECORD

Agency Index CR-24-109

Document Number _____

City of LODI County of SAN JOAQUIN, CaliforniaBrief Legal Description FOUND MONUMENT AS SHOWN ON 24-MP-48, S.J.C.R.**CORNER TYPE****COORDINATES (Optional)**

T3N/R6E

- Government Corner Control
 Meander Property
 Rancho Other

Date of Survey December 21, 2022

N. _____ E. _____

Elevation _____

Units Metric U.S. Survey Foot

Horizontal Datum _____

Zone _____ Epoch Date _____

Vertical Datum _____

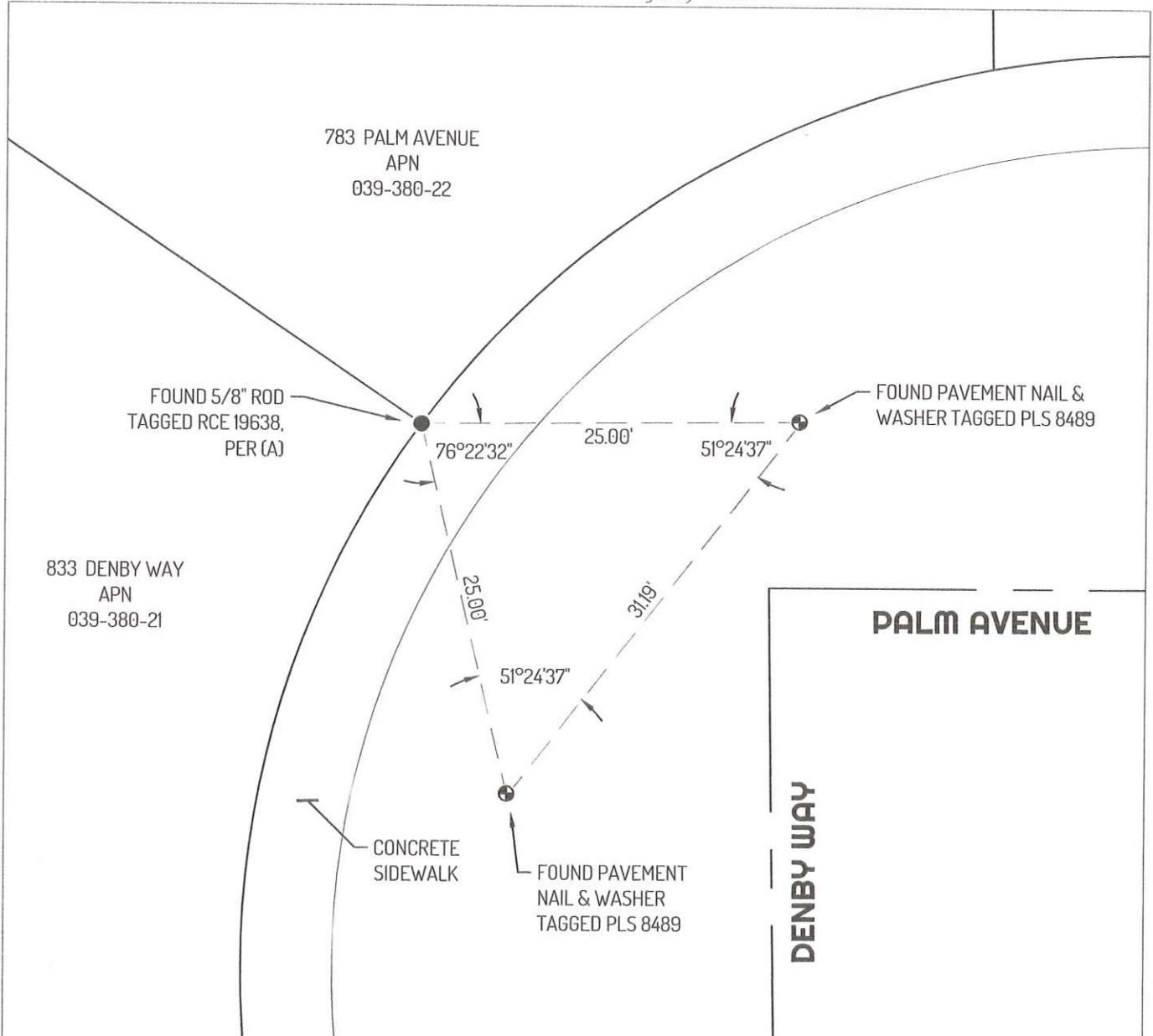
 Complies with Public Resources Code §§8801-8819 Complies with Public Resources Code §§8890-8902PLS Act Ref.: 8765(d) 8771 8773 Other:Corner/Monument: Left as found Established Rebuilt Pre-Construction Found and tagged Reestablished Referenced Post-Construction

Narrative of corner identified and monument as found, set, reset, replaced, or removed:

 See sheet #2 for description(s):**SURVEYOR'S STATEMENT**This Corner Record was prepared by me or under my direction in conformance with the Professional Land Surveyors' Act on January 25, 2023.Signed Scott L. Blake P.L.S. or R.C.E. No. 8489**COUNTY SURVEYOR'S STATEMENT**This Corner Record was received February 13, 2024and examined and filed February 27, 2024.Signed James E. Hart P.L.S. or R.C.E. No. 8657Title County Surveyor

County Surveyor's Comment _____





LEGEND

- FOUND 3/4" REBAR, PER (A) NO CAP OR TAG
- ⊕ FOUND CONTROL POINTS
- APN ASSESSOR'S PARCEL NUMBER
- MP MAPS AND PLATS, SAN JOAQUIN COUNTY RECORDS

LINETYPES

- — — — — CENTERLINE
- EDGE OF CONCRETE
- LINE
- - - - - TIE LINE

REFERENCES

(A) MP 24-048 AND CORNER RECORD 22-296, SAN JOAQUIN COUNTY SURVEYOR'S RECORDS

