

CORNER RECORD

Agency Index CR-24-108

Document Number _____

City of STOCKTON County of SAN JOAQUIN, California

Brief Legal Description FOUND MONUMENT ON WEST SIDE OF NORTH F STREET 115' NORTH OF THE INTERSECTION OF FINLAND AVENUE AND F STREET.

CORNER TYPE

COORDINATES (Optional)



- Government Corner
- Meander
- Rancho
- Control
- Property
- Other

N. _____ E. _____

Elevation _____

Units Metric U.S. Survey Foot

Horizontal Datum _____

Zone _____ Epoch Date _____

Vertical Datum _____

Complies with Public Resources Code §§8801-8819

Complies with Public Resources Code §§8890-8902

Date of Survey November 29, 2022

C.M. WEBER
GRANT

PLS Act Ref.: 8765(d) 8771 8773 Other:

Corner/Monument: Left as found Established Rebuilt Pre-Construction

Found and tagged Reestablished Referenced Post-Construction

Narrative of corner identified and monument as found, set, reset, replaced, or removed:

See sheet #2 for description(s):

SURVEYOR'S STATEMENT

This Corner Record was prepared by me or under my direction in conformance with

the Professional Land Surveyors' Act on January 25, 2023

Signed Scott L. Blake P.L.S. or R.C.E. No. 8489



COUNTY SURVEYOR'S STATEMENT

This Corner Record was received February 13, 2024

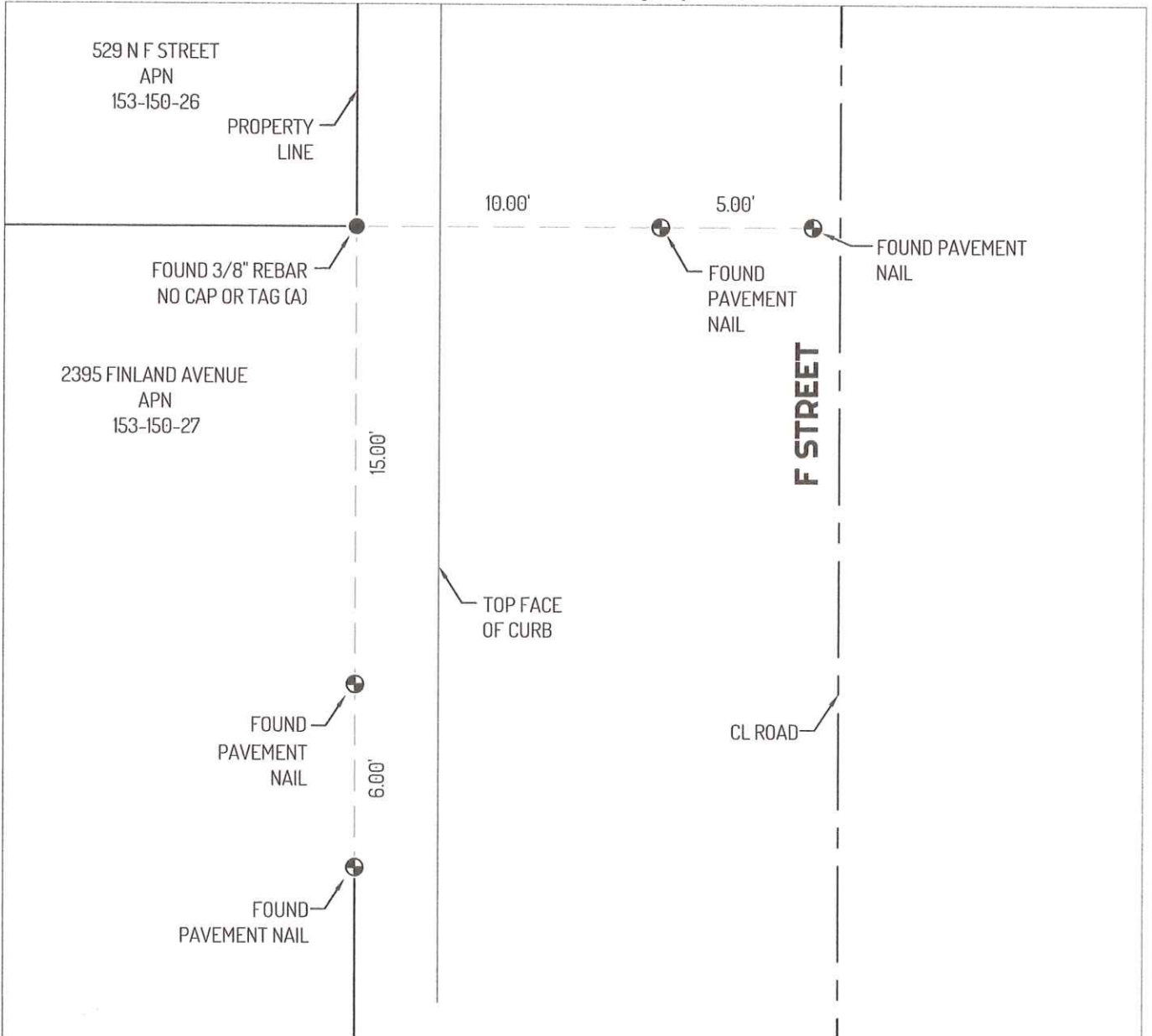
and examined and filed February 27, 2024

Signed James E. Hart P.L.S. or R.C.E. No. 8657

Title County Surveyor

County Surveyor's Comment





LEGEND

- FOUND 3/8" REBAR NO CAP OR TAG, PER (A)
- ⊕ FOUND CONTROL POINT
- 435 REFERENCE STREET ADDRESS
- APN ASSESSOR'S PARCEL NUMBER

REFERENCES

(A) CORNER RECORD 22-229, SAN JOAQUIN COUNTY SURVEYOR'S RECORDS

LINETYPES

- CENTERLINE
- CONCRETE CURB
- PROPERTY LINE
- - - TIE LINE

