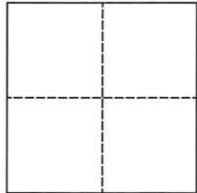


# CORNER RECORD

Agency Index CR-24-049  
 Document Number \_\_\_\_\_

City of \_\_\_\_\_ County of San Joaquin, California  
 Brief Legal Description South 99 Frontage Road @ Marfargoa Drive  
Within Sec. 59, Campo de Los Franceses



### CORNER TYPE

Government Corner  Control   
 Meander  Property   
 Rancho  Other   
 Date of Survey July 14, 2023

### COORDINATES (Optional)

N. \_\_\_\_\_ E. \_\_\_\_\_  
 Elevation. \_\_\_\_\_  
 Units Metric  U.S. Survey Foot   
 Horizontal Datum \_\_\_\_\_  
 Zone \_\_\_\_\_ Epoch Date \_\_\_\_\_  
 Vertical Datum \_\_\_\_\_  
 Complies with Public Resources Code §§8801-8819  
 Complies with Public Resources Code §§8890-8902

PLS Act Ref.:  8765(d)  8771  8773  Other:  
 Corner/Monument:  Left as found  Established  Rebuilt  Pre-Construction  
 Found and tagged  Reestablished  Referenced  Post-Construction

Narrative of corner identified and monument as found, set, reset, replaced, or removed:  
 See sheet #2 for description(s):

### SURVEYOR'S STATEMENT

This Corner Record was prepared by me or under my direction in conformance with  
 the Professional Land Surveyors Act on December 14, 2023  
 Signed ROBERT L. BORS DORF III P.L.S. or R.C.E. No. 9728

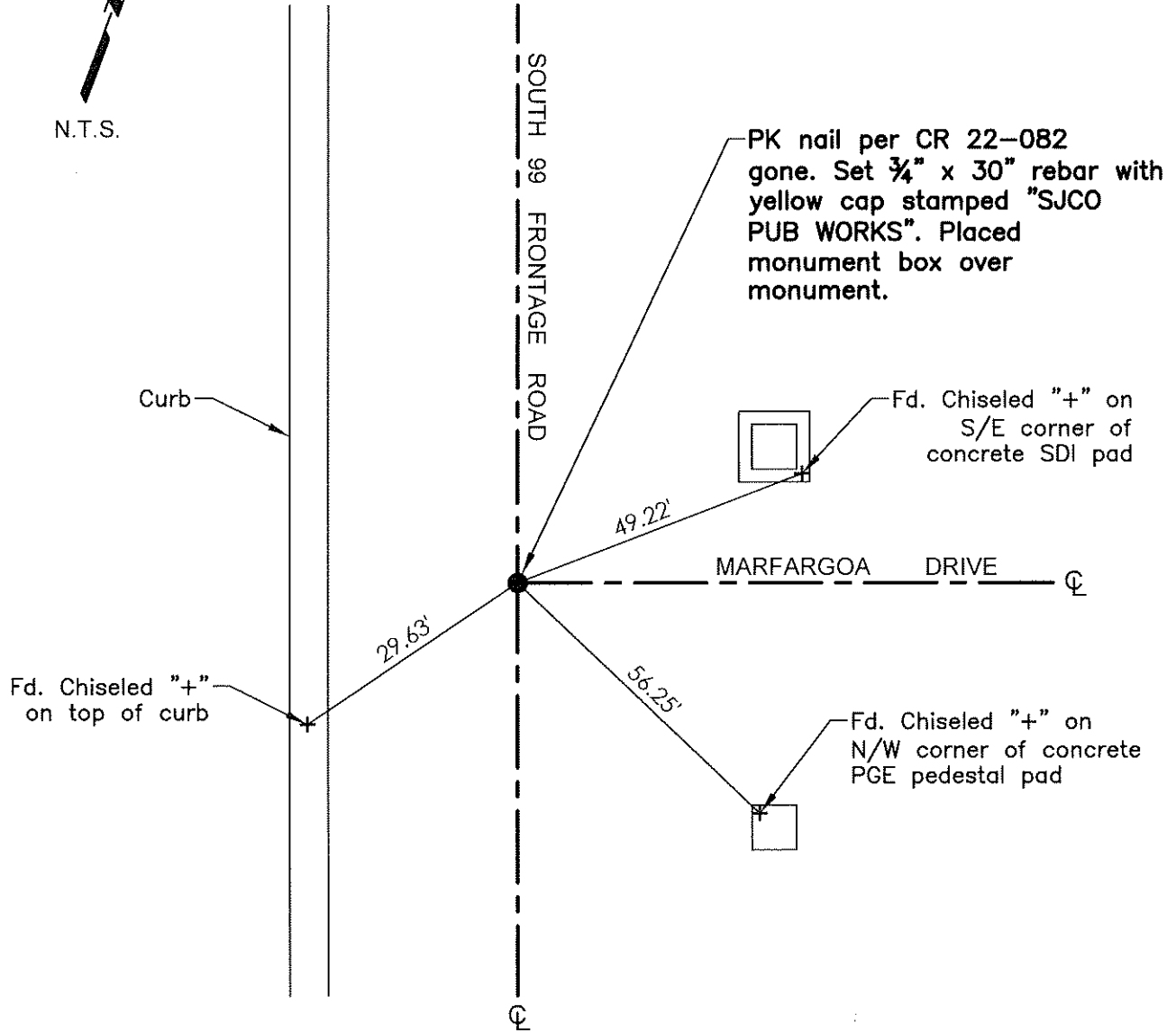


### COUNTY SURVEYOR'S STATEMENT

This Corner Record was received January 16, 2024  
 and examined and filed February 7, 2024  
 Signed James E. Hart P.L.S. or R.C.E. No. 8657  
 Title County Surveyor



County Surveyor's Comment



Fd. Chiseled "+"  
on top of curb

Fd. Chiseled "+"  
on S/E corner of  
concrete SDI pad

Fd. Chiseled "+"  
on N/W corner of concrete  
PGE pedestal pad

PK nail per CR 22-082  
gone. Set 3/4" x 30" rebar with  
yellow cap stamped "SJCO  
PUB WORKS". Placed  
monument box over  
monument.

- TR=Tree
- MB=Mailbox
- BM=Bench Mark
- EP=Edge of Pavement
- YL=Yellow Line
- FH=Fire Hydrant
- CR=Corner Record
- FP=Fence Post
- JP=Joint Pole
- LP=Light Pole
- PP=Power Pole
- GP=Guy Pole
- SP=Service Pole
- TP=Telephone Pole
- S.F.N.=Searched Found Nothing
- N.T.S.=Not To Scale
- M&P=Maps & Plats
- PM=Parcel Map
- RS=Record of Survey
- FB=Field Book
- N=North
- SDI=Storm Drain Inlet
- TOC=Top of Curb
- PCC=Portland Cement Concrete

Set=Conc. Nail with Brass Washer stamped  
"S.J. Co.", unless otherwise noted  
Fd.=Found Conc. Nail with Brass Washer stamped  
"S.J. Co.", unless otherwise noted  
Note: Found Monuments are not tagged unless  
otherwise noted.

"No attempt was made to verify the Monument(s)"