

CORNER RECORD

Agency Index CR-24-042
 Document Number _____

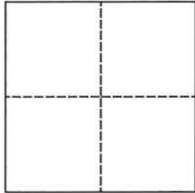
City of _____ County of San Joaquin, California

Brief Legal Description Pershing Avenue @ Thornton Road

Within Section 16, T2N, R6E, Mount Diablo Base & Meridian

CORNER TYPE

COORDINATES (Optional)



Government Corner Control
 Meander Property
 Rancho Other
 Date of Survey October 16, 2023

N. _____ E. _____

Elevation. _____

Units Metric U.S. Survey Foot

Horizontal Datum _____

Zone _____ Epoch Date _____

Vertical Datum _____

Complies with Public Resources Code §§8801-8819

Complies with Public Resources Code §§8890-8902

PLS Act Ref.: 8765(d) 8771 8773 Other:

Corner/ Monument: Left as found Established Rebuilt Pre-Construction

Found and tagged Reestablished Referenced Post-Construction

Narrative of corner identified and monument as found, set, reset, replaced, or removed:

See sheet #2 for description(s):

SURVEYOR'S STATEMENT

This Corner Record was prepared by me or under my direction in conformance with

the Professional Land Surveyor's Act on December 4, 2023

Signed Robert L. Borsdorf III P.L.S. or R.C.E. No. 9728



COUNTY SURVEYOR'S STATEMENT

This Corner Record was received January 16, 2024

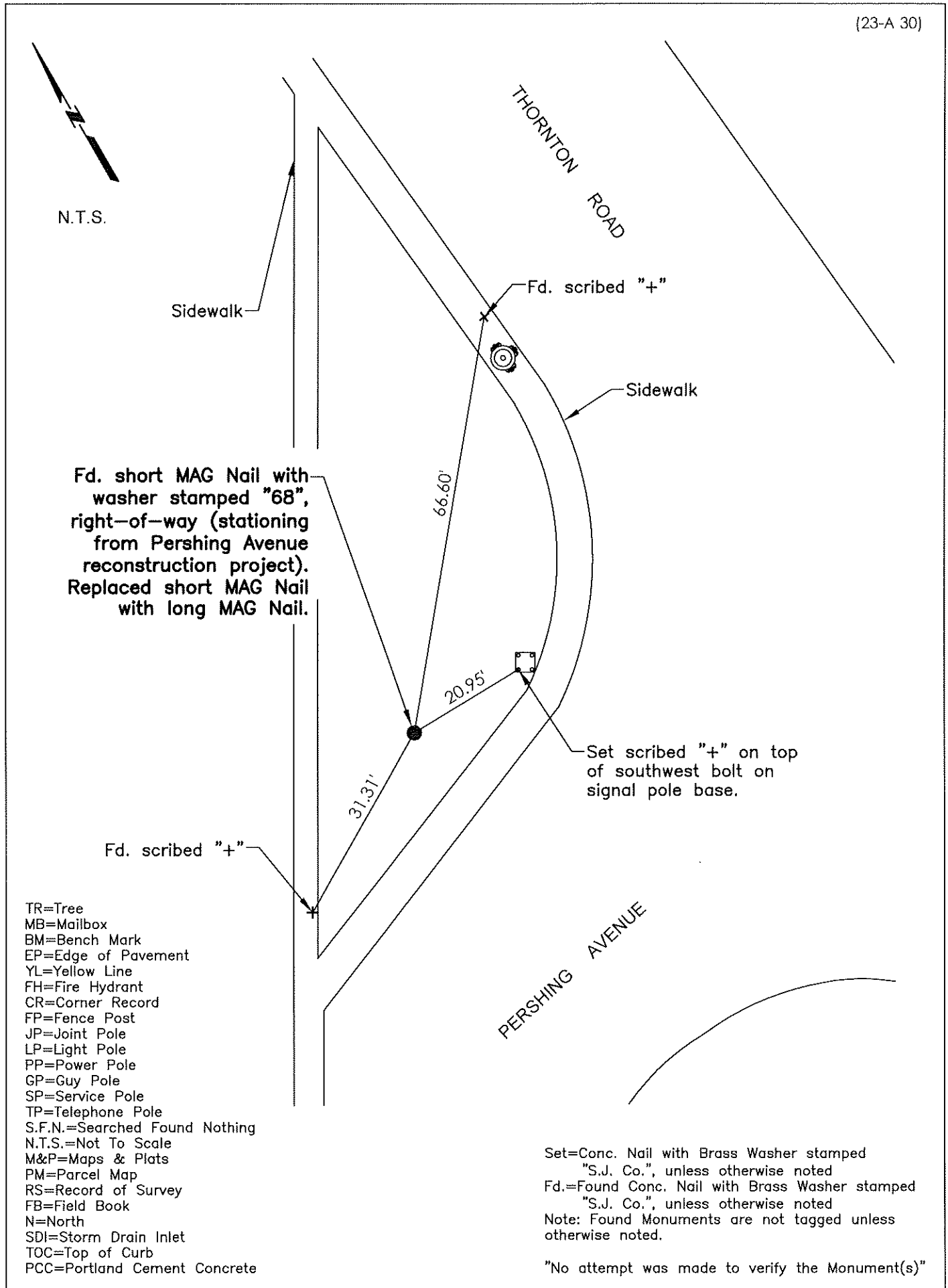
and examined and filed February 7, 2024

Signed James E. Hart P.L.S. or R.C.E. No. 8657

Title County Surveyor

County Surveyor's Comment





N.T.S.

Sidewalk

THORNTON ROAD

Fd. scribed "+"

Sidewalk

Fd. short MAG Nail with washer stamped "68", right-of-way (stationing from Pershing Avenue reconstruction project). Replaced short MAG Nail with long MAG Nail.

Set scribed "+" on top of southwest bolt on signal pole base.

20.95'

66.60'

31.37'

Fd. scribed "+"

PERSHING AVENUE

- TR=Tree
- MB=Mailbox
- BM=Bench Mark
- EP=Edge of Pavement
- YL=Yellow Line
- FH=Fire Hydrant
- CR=Corner Record
- FP=Fence Post
- JP=Joint Pole
- LP=Light Pole
- PP=Power Pole
- GP=Guy Pole
- SP=Service Pole
- TP=Telephone Pole
- S.F.N.=Searched Found Nothing
- N.T.S.=Not To Scale
- M&P=Maps & Plats
- PM=Parcel Map
- RS=Record of Survey
- FB=Field Book
- N=North
- SDI=Storm Drain Inlet
- TOC=Top of Curb
- PCC=Portland Cement Concrete

Set=Conc. Nail with Brass Washer stamped "S.J. Co.", unless otherwise noted
 Fd.=Found Conc. Nail with Brass Washer stamped "S.J. Co.", unless otherwise noted
 Note: Found Monuments are not tagged unless otherwise noted.

"No attempt was made to verify the Monument(s)"