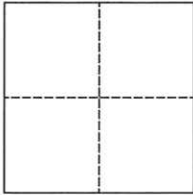


CORNER RECORD

Agency Index

CR-24-038

Document Number

City of _____ County of San Joaquin, CaliforniaBrief Legal Description Sibley Avenue 660'± south of Ada AvenueWithin Sec. 36, T2N, R7E, Mount Diablo Base & Meridian**CORNER TYPE****COORDINATES (Optional)**

Government Corner ☐ Control ☐
Meander ☐ Property ☐
Rancho ☐ Other ☒

Date of Survey June 15, 2022

N. _____ E. _____

Elevation. _____

Units Metric ☐ U.S. Survey Foot ☒

Horizontal Datum _____

Zone _____ Epoch Date _____

Vertical Datum _____

☐ Complies with Public Resources Code §§8801-8819☐ Complies with Public Resources Code §§8890-8902

PLS Act Ref.:

☐ 8765(d)☒ 8771☐ 8773☐ Other:Corner/
Monument:☐ Left as found☐ Established☐ Rebuilt☐ Pre-Construction☐ Found and tagged☒ Reestablished☐ Referenced☒ Post-Construction

Narrative of corner identified and monument as found, set, reset, replaced, or removed:

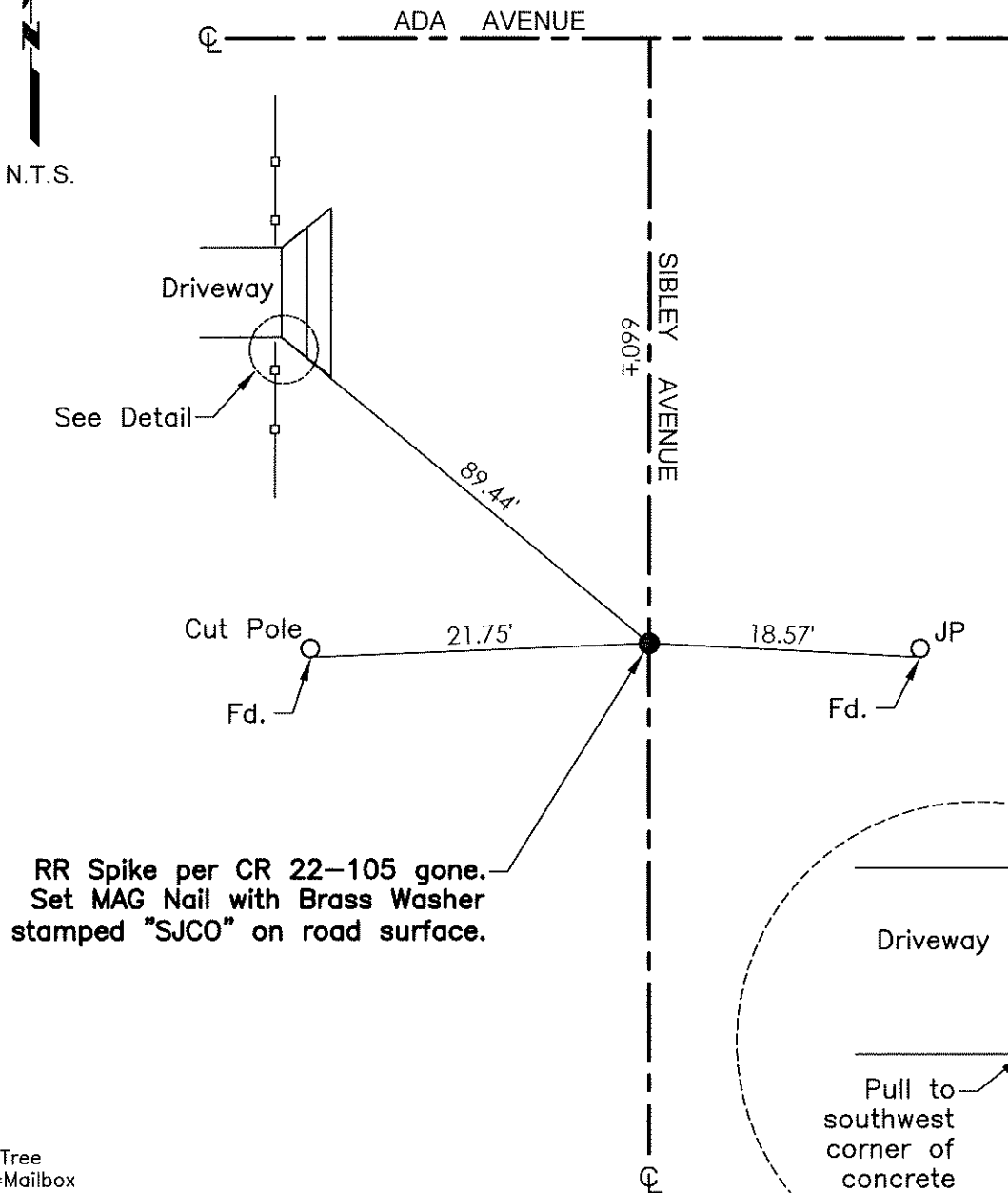
☒ See sheet #2 for description(s):**SURVEYOR'S STATEMENT**

This Corner Record was prepared by me or under my direction in conformance with

the Professional Land Surveyor's Act on September 12, 2022Signed James E. Hart P.L.S. or R.C.E. No. 8657**COUNTY SURVEYOR'S STATEMENT**This Corner Record was received December 27, 2023and examined and filed January 12, 2024Signed James E. Hart P.L.S. or R.C.E. No. 8657Title County Surveyor**County Surveyor's Comment**



N.T.S.



RR Spike per CR 22-105 gone.
Set MAG Nail with Brass Washer
stamped "SJCO" on road surface.

Driveway

Pull to
southwest
corner of
concrete
driveway

Detail

TR=Tree
MB=Mailbox
BM=Bench Mark
EP=Edge of Pavement
YL=Yellow Line
FH=Fire Hydrant
CR=Corner Record
FP=Fence Post
JP=Joint Pole
LP=Light Pole
PP=Power Pole
GP=Guy Pole
SP=Service Pole
TP=Telephone Pole
S.F.N.=Searched Found Nothing
N.T.S.=Not To Scale
M&P=Maps & Plats
PM=Parcel Map
RS=Record of Survey
FB=Field Book
N=North
SDI=Storm Drain Inlet
TOC=Top of Curb
PCC=Portland Cement Concrete

Set=Conc. Nail with Brass Washer stamped
"S.J. Co.", unless otherwise noted
Fd.=Found Conc. Nail with Brass Washer stamped
"S.J. Co.", unless otherwise noted
Note: Found Monuments are not tagged unless
otherwise noted.

"No attempt was made to verify the Monument(s)"