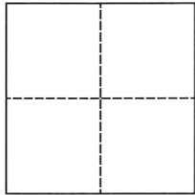


CORNER RECORD

Agency Index CR-24-026
 Document Number _____

City of _____ County of San Joaquin, California

Brief Legal Description Roberts Road 7280± south of Highway 4
Within Sec. 29, T1N, R6E, Mount Diablo Base & Meridian



CORNER TYPE

- Government Corner Control
 Meander Property
 Rancho Other

Date of Survey July 15, 2022

COORDINATES (Optional)

N. _____ E. _____

Elevation. _____

Units Metric U.S. Survey Foot

Horizontal Datum _____

Zone _____ Epoch Date _____

Vertical Datum _____

Complies with Public Resources Code §§8801-8819

Complies with Public Resources Code §§8890-8902

PLS Act Ref.: 8765(d) 8771 8773 Other:

Corner/Monument: Left as found Established Rebuilt Pre-Construction
 Found and tagged Reestablished Referenced Post-Construction

Narrative of corner identified and monument as found, set, reset, replaced, or removed:

See sheet #2 for description(s):

SURVEYOR'S STATEMENT

This Corner Record was prepared by me or under my direction in conformance with

the Professional Land Surveyor's Act on October 2, 2022

Signed James E. Hart P.L.S. or P.C.E. No. 8657



COUNTY SURVEYOR'S STATEMENT

This Corner Record was received December 27, 2023

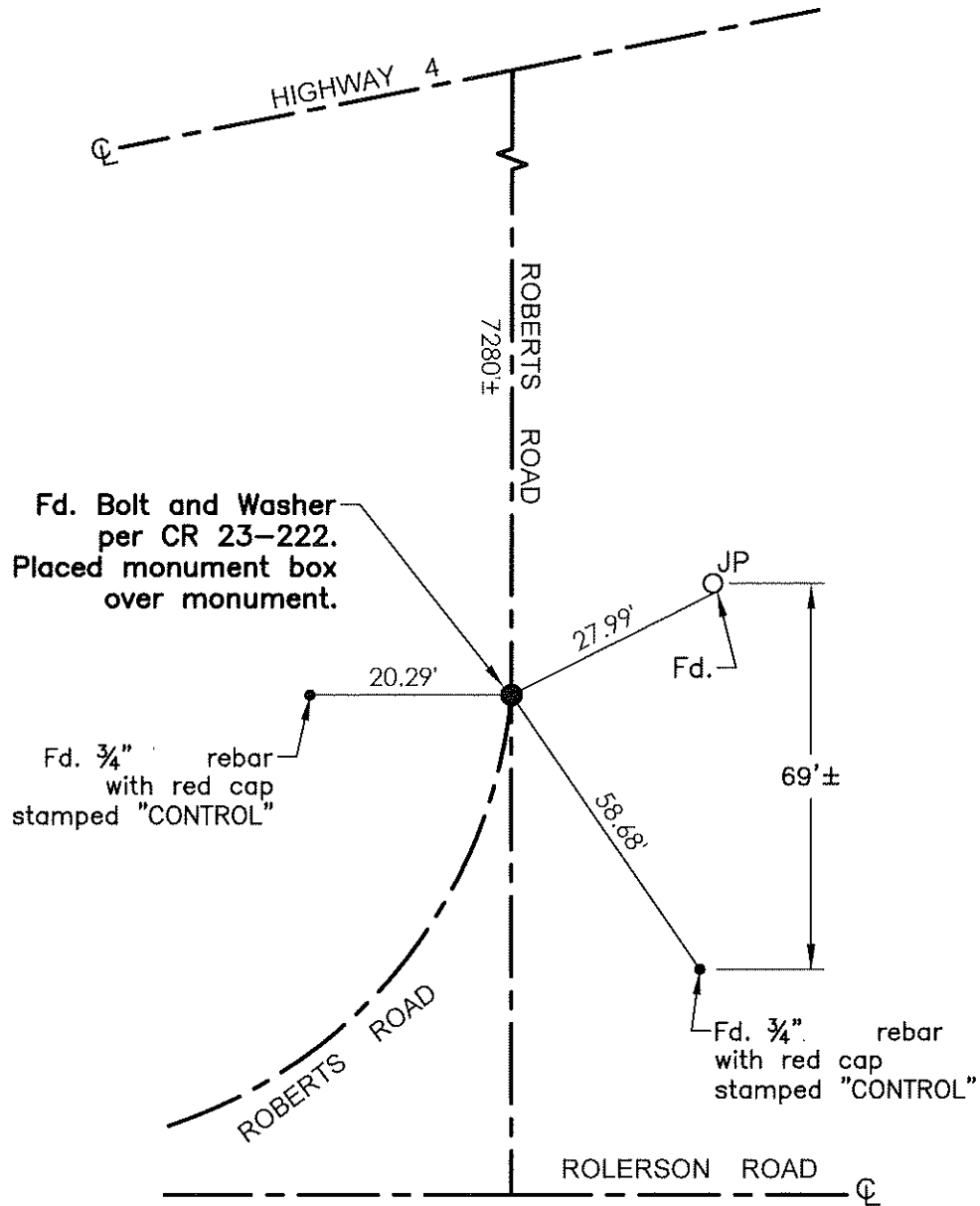
and examined and filed January 12, 2024

Signed James E. Hart P.L.S. or P.C.E. No. 8657

Title County Surveyor

County Surveyor's Comment





Fd. Bolt and Washer per CR 23-222. Placed monument box over monument.

Fd. 3/4" rebar with red cap stamped "CONTROL"

JP
Fd.

Fd. 3/4" rebar with red cap stamped "CONTROL"

- TR=Tree
- MB=Mailbox
- BM=Bench Mark
- EP=Edge of Pavement
- YL=Yellow Line
- FH=Fire Hydrant
- CR=Corner Record
- FP=Fence Post
- JP=Joint Pole
- LP=Light Pole
- PP=Power Pole
- GP=Guy Pole
- SP=Service Pole
- TP=Telephone Pole
- S.F.N.=Searched Found Nothing
- N.T.S.=Not To Scale
- M&P=Maps & Plats
- PM=Parcel Map
- RS=Record of Survey
- FB=Field Book
- N=North
- SDI=Storm Drain Inlet
- TOC=Top of Curb
- PCC=Portland Cement Concrete

Set=Conc. Nail with Brass Washer stamped "S.J. Co.", unless otherwise noted
 Fd.=Found Conc. Nail with Brass Washer stamped "S.J. Co.", unless otherwise noted
 Note: Found Monuments are not tagged unless otherwise noted.

"No attempt was made to verify the Monument(s)"