

CORNER RECORD

Agency Index CR-24-025

Document Number _____

City of _____ County of San Joaquin, California

Brief Legal Description Roberts Road 51 60± south of Highway 4

CORNER TYPE

COORDINATES (Optional)



Government Corner Control
 Meander Property
 Rancho Other

Date of Survey July 15, 2022

N. _____ E. _____

Elevation. _____

Units Metric U.S. Survey Foot

Horizontal Datum _____

Zone _____ Epoch Date _____

Vertical Datum _____

Complies with Public Resources Code §§8801-8819

Complies with Public Resources Code §§8890-8902

PLS Act Ref.: 8765(d) 8771 8773 Other:

Corner/Monument: Left as found Established Rebuilt Pre-Construction

Found and tagged Reestablished Referenced Post-Construction

Narrative of corner identified and monument as found, set, reset, replaced, or removed:

See sheet #2 for description(s):

SURVEYOR'S STATEMENT

This Corner Record was prepared by me or under my direction in conformance with

the Professional Land Surveyor's Act on October 2, 2022

Signed James E Hart P.L.S. or P.C.E. No. 8657



COUNTY SURVEYOR'S STATEMENT

This Corner Record was received December 27, 2023

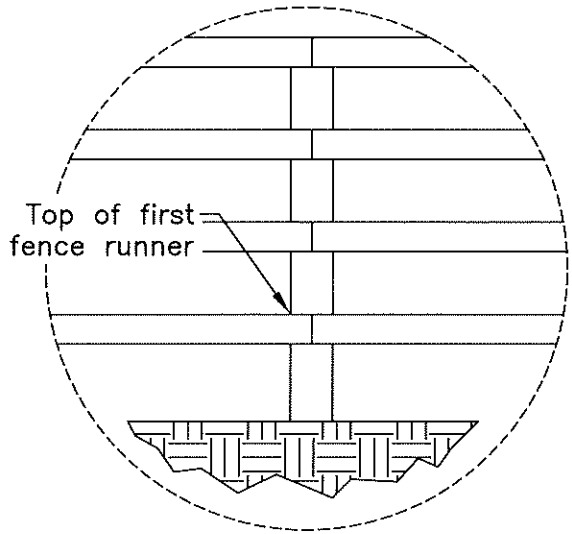
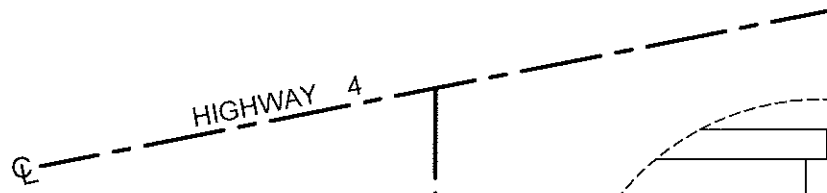
and examined and filed January 12, 2024

Signed James E Hart P.L.S. or P.C.E. No. 8657

Title _____ County Surveyor

County Surveyor's Comment





Detail

Fd. Bolt in monument box at Section Corner per CR 23-221

Fd. southeast corner of fence post at top of first fence runner

35.63'

See Detail

22.06'

24.06'

48.68'

Fd.

JP

Fd. NGS Benchmark

Fd. 2"x2" hub & tack

- TR=Tree
- MB=Mailbox
- BM=Bench Mark
- EP=Edge of Pavement
- YL=Yellow Line
- FH=Fire Hydrant
- CR=Corner Record
- FP=Fence Post
- JP=Joint Pole
- LP=Light Pole
- PP=Power Pole
- GP=Guy Pole
- SP=Service Pole
- TP=Telephone Pole
- S.F.N.=Searched Found Nothing
- N.T.S.=Not To Scale
- M&P=Maps & Plats
- PM=Parcel Map
- RS=Record of Survey
- FB=Field Book
- N=North
- SDI=Storm Drain Inlet
- TOC=Top of Curb
- PCC=Portland Cement Concrete

Set=Conc. Nail with Brass Washer stamped "S.J. Co.", unless otherwise noted
 Fd.=Found Conc. Nail with Brass Washer stamped "S.J. Co.", unless otherwise noted
 Note: Found Monuments are not tagged unless otherwise noted.

"No attempt was made to verify the Monument(s)"