

CORNER RECORD

Agency Index

CR-24-014

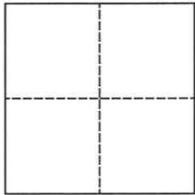
Document Number

City of _____ County of San Joaquin, California

Brief Legal Description River Road @ Carrollton Road
on west line of Sec. 14, T2S, R8E, Mount Diablo Base & Meridian

CORNER TYPE

COORDINATES (Optional)

Government Corner ☐ Control ☐
Meander ☐ Property ☐
Rancho ☐ Other ☒

N. _____ E. _____

Elevation. _____

Units Metric ☐ U.S. Survey Foot ☒

Horizontal Datum _____

Zone _____ Epoch Date _____

Vertical Datum _____

Date of Survey July 7, 2022

☐ Complies with Public Resources Code §§8801-8819☐ Complies with Public Resources Code §§8890-8902

PLS Act Ref.:

☐ 8765(d)☒ 8771☐ 8773☐ Other:Corner/
Monument:☐ Left as found☐ Established☒ Rebuilt☐ Pre-Construction☐ Found and tagged☐ Reestablished☐ Referenced☒ Post-Construction

Narrative of corner identified and monument as found, set, reset, replaced, or removed:

☒ See sheet #2 for description(s):

SURVEYOR'S STATEMENT

This Corner Record was prepared by me or under my direction in conformance with

the Professional Land Surveyor's Act on September 12, 2022

Signed James E. Hart P.L.S. or R.C.E. No. 8657

COUNTY SURVEYOR'S STATEMENT

This Corner Record was received December 27, 2023

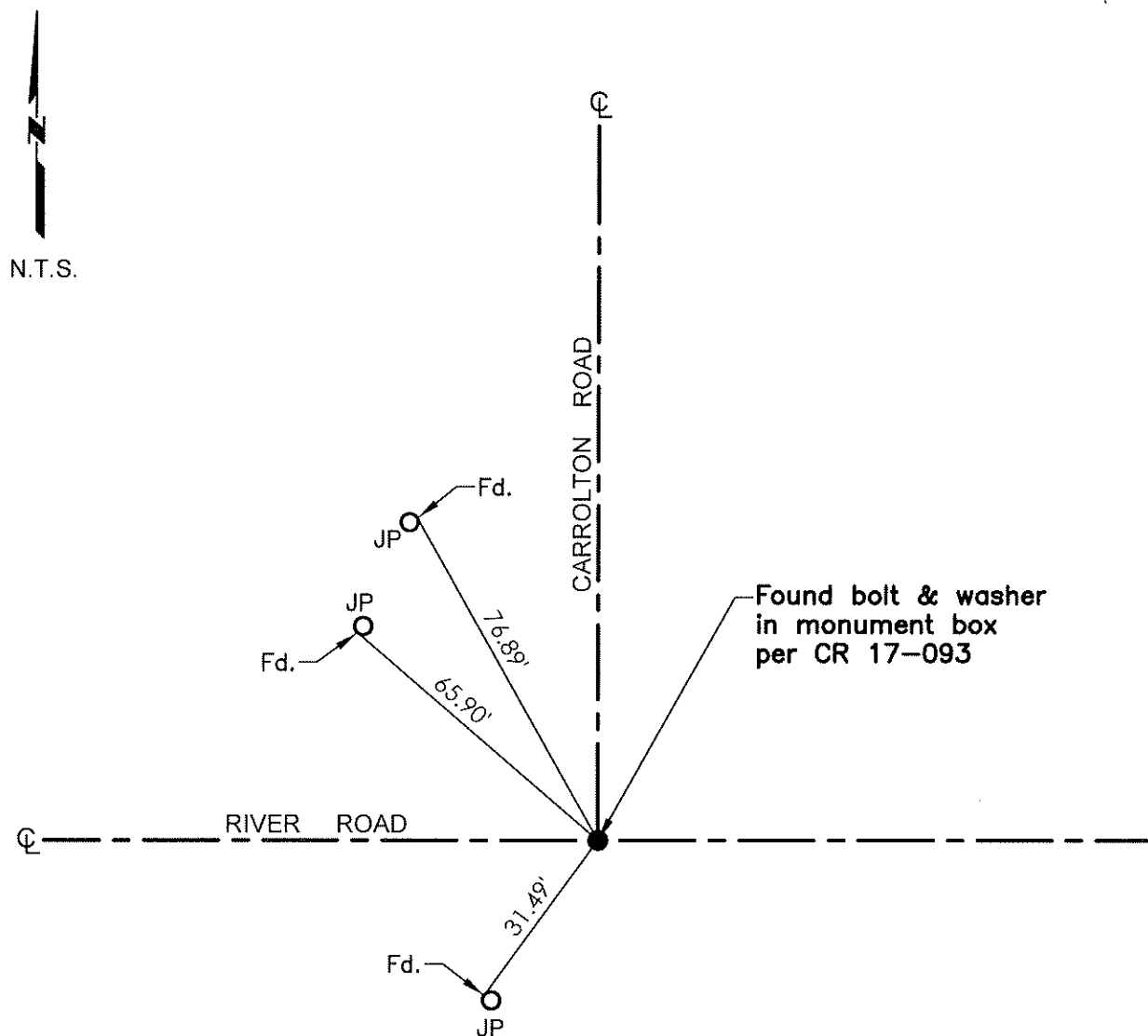
and examined and filed January 11, 2024

Signed James E. Hart P.L.S. or R.C.E. No. 8657

Title _____ County Surveyor

County Surveyor's Comment





TR=Tree
 MB=Mailbox
 BM=Bench Mark
 EP=Edge of Pavement
 YL=Yellow Line
 FH=Fire Hydrant
 CR=Corner Record
 FP=Fence Post
 JP=Joint Pole
 LP=Light Pole
 PP=Power Pole
 GP=Guy Pole
 SP=Service Pole
 TP=Telephone Pole
 S.F.N.=Searched Found Nothing
 N.T.S.=Not To Scale
 M&P=Maps & Plats
 PM=Parcel Map
 RS=Record of Survey
 FB=Field Book
 N=North
 SDI=Storm Drain Inlet
 TOC=Top of Curb
 PCC=Portland Cement Concrete

Set=Conc. Nail with Brass Washer stamped
 "S.J. Co.", unless otherwise noted
 Fd.=Found Conc. Nail with Brass Washer stamped
 "S.J. Co.", unless otherwise noted
 Note: Found Monuments are not tagged unless
 otherwise noted.

"No attempt was made to verify the Monument(s)"