

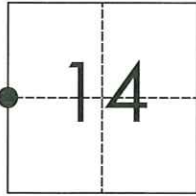
CORNER RECORD

Agency Index CR-24-009
Document Number _____

City of _____ County of San Joaquin, California
Brief Legal Description River Road 1280'± west of Burwood Road

CORNER TYPE

COORDINATES (Optional)



T2S R9E
MDB&M

Government Corner Control
Meander Property
Rancho Other

Date of Survey March 21, 2023

N. _____ E. _____

Elevation. _____

Units Metric U.S. Survey Foot

Horizontal Datum _____

Zone _____ Epoch Date _____

Vertical Datum _____

Complies with Public Resources Code §§8801-8819

Complies with Public Resources Code §§8890-8902

PLS Act Ref.: 8765(d) 8771 8773 Other:

Corner/ Monument: Left as found Established Rebuilt Pre-Construction

Found and tagged Reestablished Referenced Post-Construction

Narrative of corner identified and monument as found, set, reset, replaced, or removed:

See sheet #2 for description(s):

SURVEYOR'S STATEMENT

This Corner Record was prepared by me or under my direction in conformance with
the Professional Land Surveyor's Act on November 6, 2023
Signed *Robert L. Borsdorf III* P.L.S. or R.C.E. No. 9728

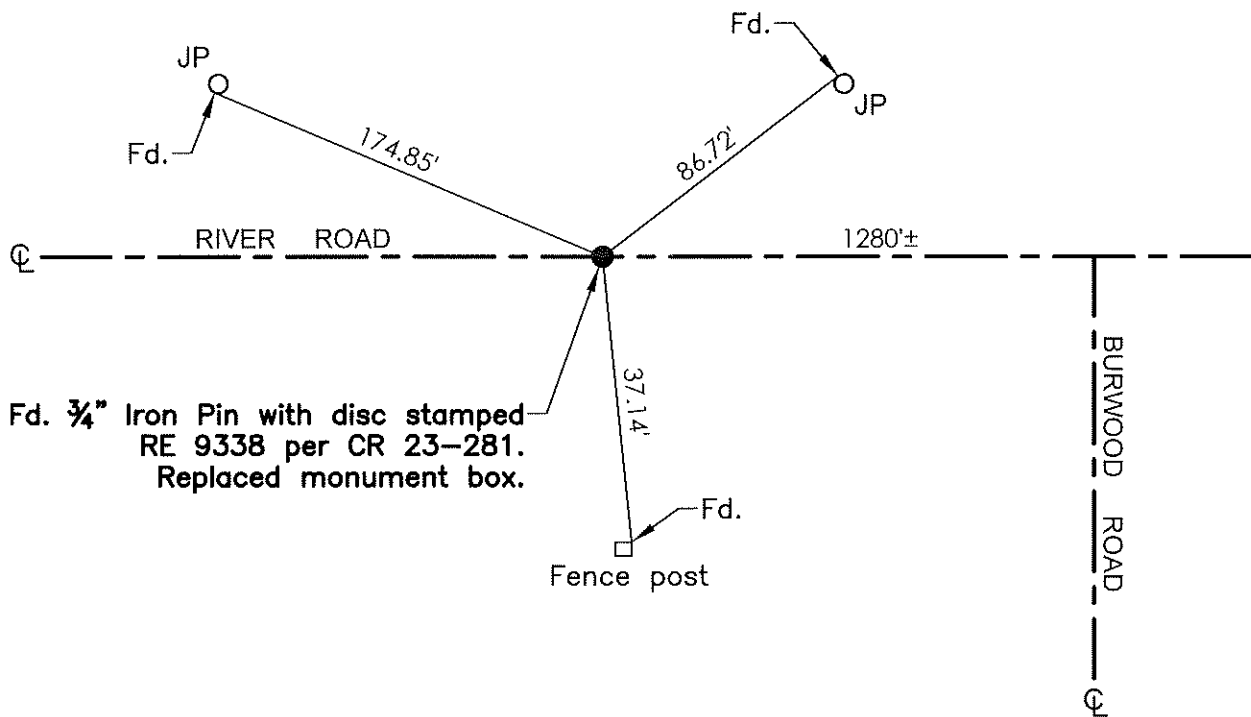


COUNTY SURVEYOR'S STATEMENT

This Corner Record was received December 27, 2023
and examined and filed January 11, 2024
Signed *James E. Hart* P.L.S. or R.C.E. No. 8657
Title County Surveyor



County Surveyor's Comment



Fd. 3/4" Iron Pin with disc stamped
RE 9338 per CR 23-281.
Replaced monument box.

- TR=Tree
- MB=Mailbox
- BM=Bench Mark
- EP=Edge of Pavement
- YL=Yellow Line
- FH=Fire Hydrant
- CR=Corner Record
- FP=Fence Post
- JP=Joint Pole
- LP=Light Pole
- PP=Power Pole
- GP=Guy Pole
- SP=Service Pole
- TP=Telephone Pole
- S.F.N.=Searched Found Nothing
- N.T.S.=Not To Scale
- M&P=Maps & Plats
- PM=Parcel Map
- RS=Record of Survey
- FB=Field Book
- N=North
- SDI=Storm Drain Inlet
- TOC=Top of Curb
- PCC=Portland Cement Concrete

Set=Conc. Nail with Brass Washer stamped
"S.J. Co.", unless otherwise noted
Fd.=Found Conc. Nail with Brass Washer stamped
"S.J. Co.", unless otherwise noted
Note: Found Monuments are not tagged unless
otherwise noted.

"No attempt was made to verify the Monument(s)"