

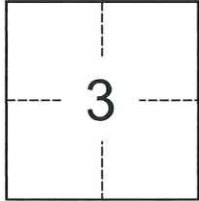
CORNER RECORD

Agency Index CR-24-008
Document Number _____

City of Lodi County of San Joaquin, California
Brief Legal Description M.P. 28-75

CORNER TYPE

COORDINATES (Optional)



Government Corner Control
Meander Property
Rancho Other

N. _____ E. _____
Elevation _____
Units Metric U.S. Survey Foot
Horizontal Datum _____
Zone _____ Epoch Date _____
Vertical Datum _____

Date of Survey October 30, 2023

Complies with Public Resources Code §§8801-8819
 Complies with Public Resources Code §§8890-8902

T.3N., R.6E., M.D.B. & M.

PLS Act Ref.: 8765(d) 8771 8773 Other:
Corner/Monument: Left as found Established Rebuilt Pre-Construction
 Found and tagged Reestablished Referenced Post-Construction

Narrative of corner identified and monument as found, set, reset, replaced, or removed:
 See sheet #2 for description(s):

During the course of our retracement of lines shown on M.P. 28-75, we found missing monuments, and monuments differing in character. This corner record identifies monuments found and reset.

SURVEYOR'S STATEMENT

This Corner Record was prepared by me or under my direction in conformance with
the Professional Land Surveyors' Act on November 2, 2023
Signed Joshua C. Elson P.L.S. or R.C.E. No. 7889



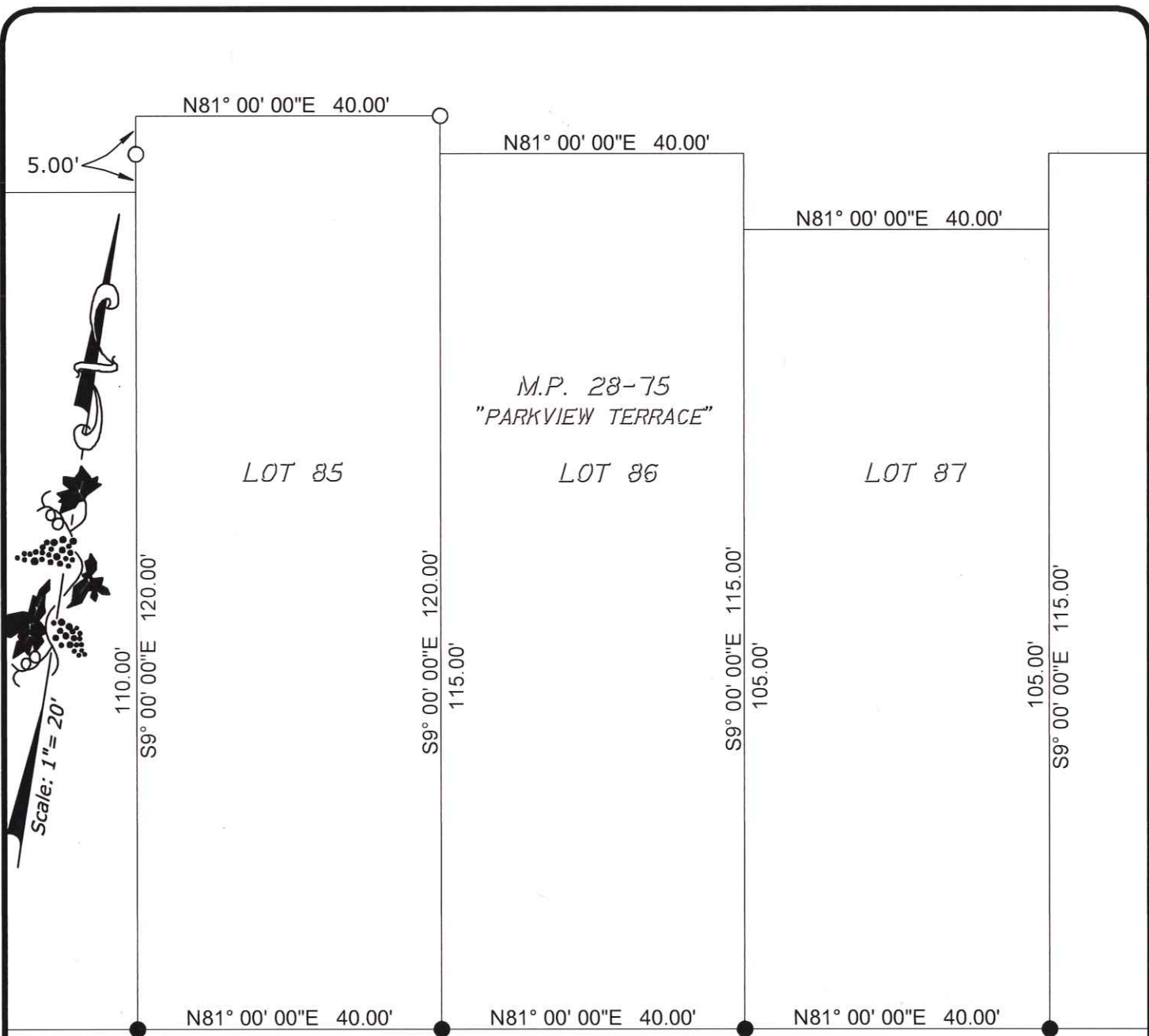
COUNTY SURVEYOR'S STATEMENT

This Corner Record was received January 18, 2024
and examined and filed February 7, 2024
Signed James E. Hart P.L.S. or R.C.E. No. 8657
Title County Surveyor



County Surveyor's Comment

S:\Projects\2023\20048\3_Drawings\20048_CR.dwg 12/06/23 10:02am - JOSH-XR\FPS: 06x11_BP_P.dwg 20048_Aerial.dwg Elson_Signature.dwg



Scale: 1" = 20'

CENTRAL PARK DRIVE

LEGEND:

- FD. CHISELED "+" AT PROPERTY CORNER, 5/8" IRON ROD PER M.P. 28-75
- SET 3/4"x30" IRON ROD, CAPPED AND STAMPED "BAUMBACH & PIAZZA ELSON PLS 7889"
- M.P. MAPS AND PLATS, SAN JOAQUIN COUNTY RECORDS



PREPARED IN THE OFFICE OF:
BAUMBACH & PIAZZA, INC.
 CIVIL ENGINEERS • SURVEYORS
 www.bpengineers.net 323 W. Elm St.
 209.368.6618 Lodi, CA 95240