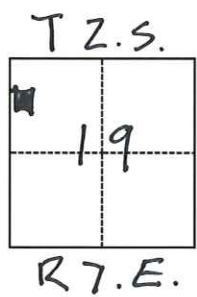


# CORNER RECORD

Agency Index CR-24-006  
Document Number \_\_\_\_\_

City of \_\_\_\_\_ County of SAN JOAQUIN, California  
Brief Legal Description A PORTION OF SECTION 19, T2S., R7E., MDB&M



### CORNER TYPE

- Government Corner
- Meander
- Rancho
- Control
- Property
- Other

Date of Survey \_\_\_\_\_

### COORDINATES (Optional)

N. \_\_\_\_\_ E. \_\_\_\_\_  
 Elevation \_\_\_\_\_  
 Units  Metric  U.S. Survey Foot  
 Horizontal Datum \_\_\_\_\_  
 Zone \_\_\_\_\_ Epoch Date \_\_\_\_\_  
 Vertical Datum \_\_\_\_\_  
 Complies with Public Resources Code §§8801-8819  
 Complies with Public Resources Code §§8890-8902

- PLS Act Ref.:  8765(d)  8771  8773  Other:
- Corner/Monument:  Left as found  Established  Rebuilt  Pre-Construction  
 Found and tagged  Reestablished  Referenced  Post-Construction

Narrative of corner identified and monument as found, set, reset, replaced, or removed:  
 See sheet #2 for description(s):

Project # 5336528

### SURVEYOR'S STATEMENT

This Corner Record was prepared by me or under my direction in conformance with  
 the Professional Land Surveyors' Act on 1-5-24  
 Signed [Signature] P.L.S. or R.C.E. No. 5110



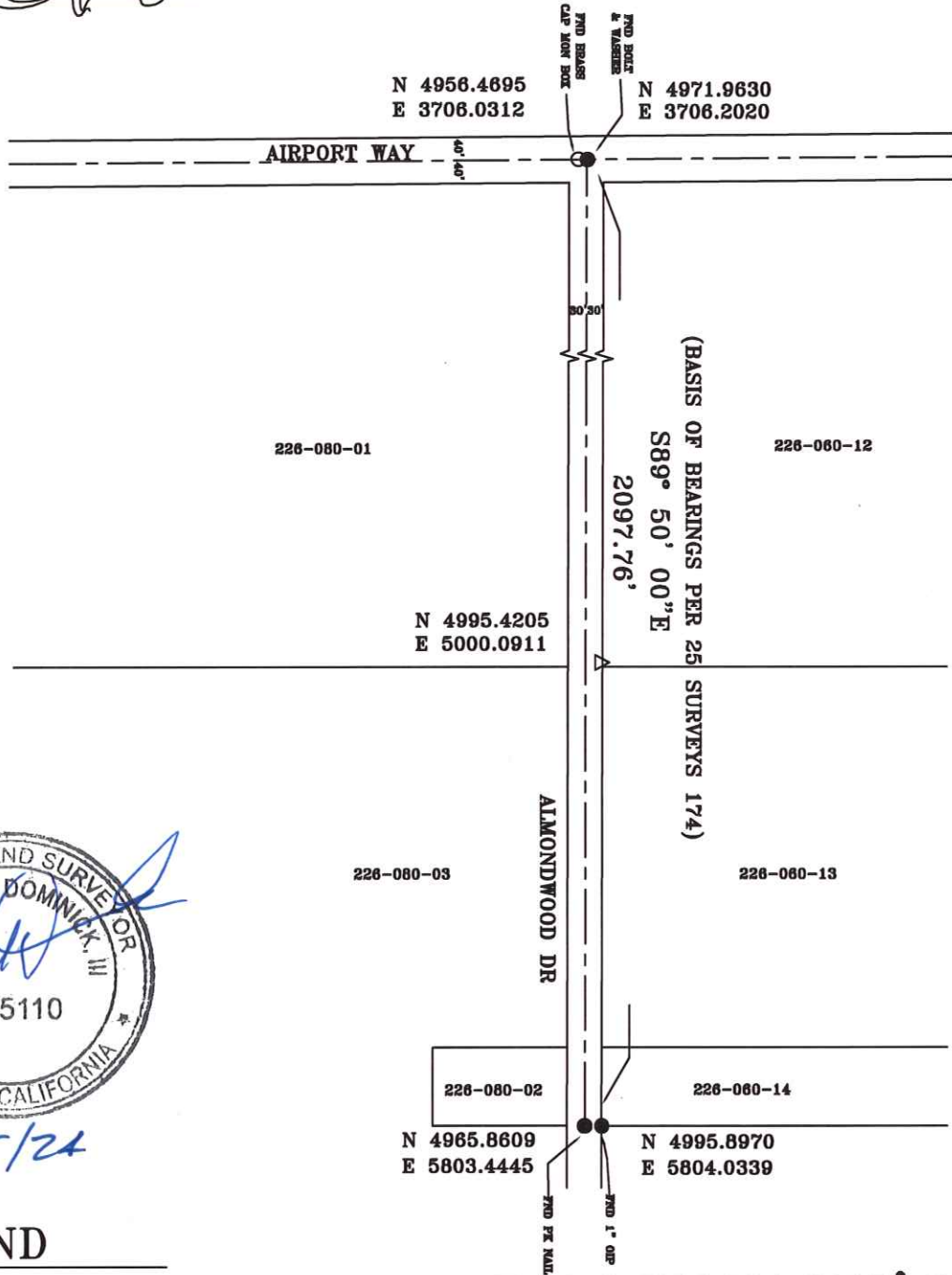
### COUNTY SURVEYOR'S STATEMENT

This Corner Record was received January 9, 2024  
 and examined and filed February 6, 2024  
 Signed James E. Hart P.L.S. or R.C.E. No. 8657  
 Title County Surveyor



County Surveyor's Comment

1" = 300'



1/5/24

### LEGEND

- FOUND MONUMENT AS NOTED PER 4 PM 63
- FOUND MONUMENT AS NOTED PER 25 SURVEYS 174
- △ SURVEY CONTROL POINT 60D NAIL

**DOMINICK'S**  
 CIVIL ENGINEERING AND SURVEYING  
 P.O. BOX 1216  
 RED BLUFF, CA. 96080  
 530-529-3560  
 NOVEMBER 2023