

CORNER RECORD

Agency Index CR-24-004

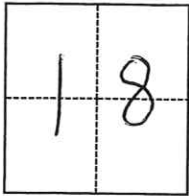
Document Number _____

City of _____ Unincorporated _____ County of San Joaquin, California

Brief Legal Description _____ portion of 35-S-159

CORNER TYPE

COORDINATES (Optional)



T. 2 S
R. 9 E

- Government Corner
- Meander
- Rancho
- Control
- Property
- Other

N. _____ E. _____

Elevation _____

Units Metric U.S. Survey Foot

Horizontal Datum _____

Zone _____ Epoch Date _____

Vertical Datum _____

Complies with Public Resources Code §§8801-8819

Complies with Public Resources Code §§8890-8902

Date of Survey September 20, 2023

PLS Act Ref.: 8765(d) 8771 8773 Other:

Corner/Monument: Left as found Established Rebuilt Pre-Construction

Found and tagged Reestablished Referenced Post-Construction

Narrative of corner identified and monument as found, set, reset, replaced, or removed:

See sheet #2 for description(s):

See notes on sheet 2.

SURVEYOR'S STATEMENT

This Corner Record was prepared by me or under my direction in conformance with the Professional Land Surveyors' Act on October 10, 2023 & 12/20/23

Signed Michael T. Turnace (P.L.S. or R.C.E. No. 7454)



COUNTY SURVEYOR'S STATEMENT

This Corner Record was received January 8, 2024

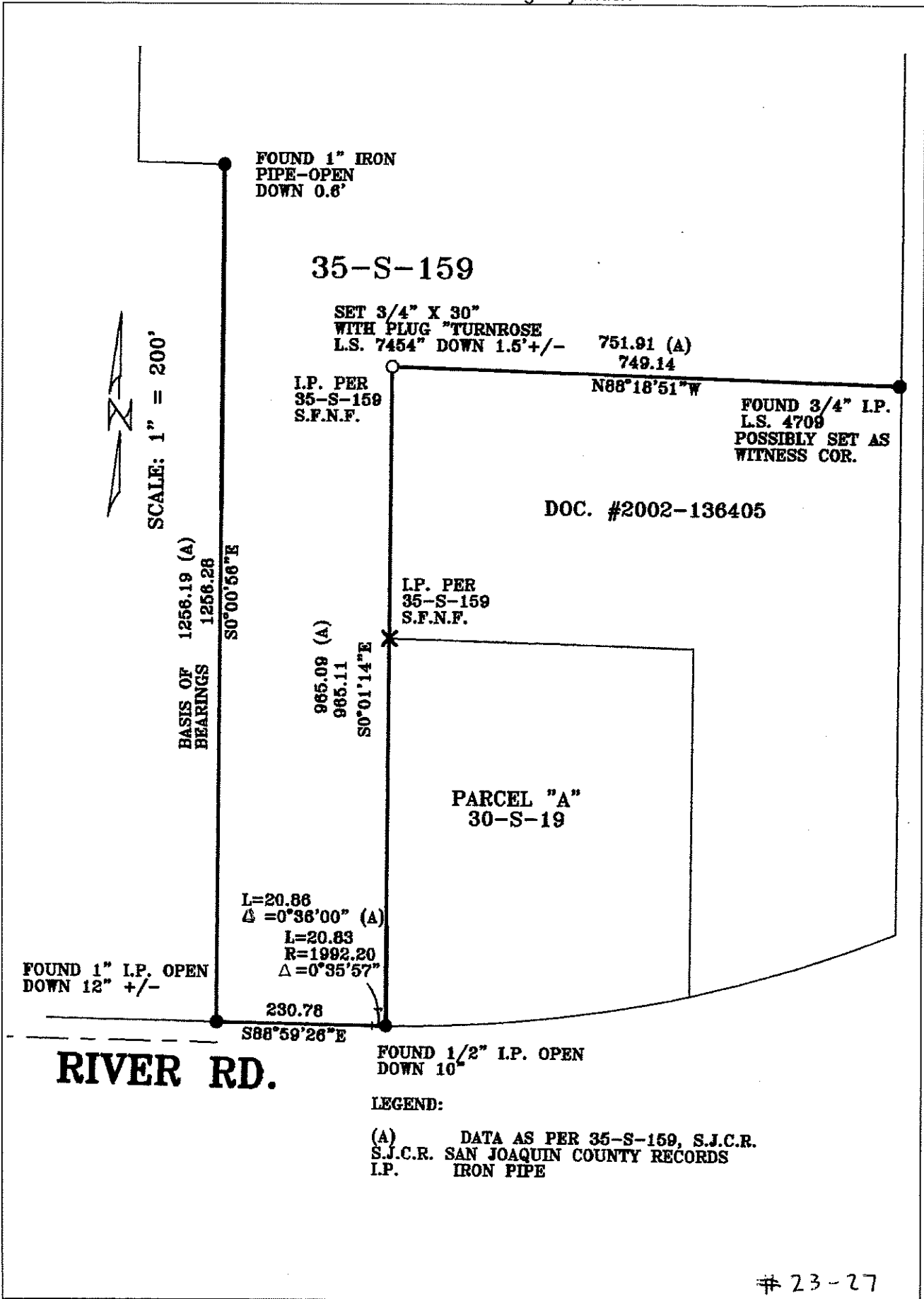
and examined and filed February 5, 2024.

Signed James E. Hart P.L.S. or R.C.E. No. 8657

Title County Surveyor

County Surveyor's Comment





23-27