

CORNER RECORD

Agency Index CR-24-003

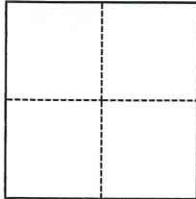
Document Number _____

City of LATHROP County of SAN JOAQUIN, California

Brief Legal Description COTTON PARCEL PER RS 24-16, SJCR, SE-1/4 SEC.27, T1S, R6E, MDB&M

CORNER TYPE

COORDINATES (Optional)



- Government Corner
- Meander
- Rancho
- Control
- Property
- Other

Date of Survey July 19, 2023

N. _____ E. _____

Elevation _____

Units Metric U.S. Survey Foot

Horizontal Datum _____

Zone _____ Epoch Date _____

Vertical Datum _____

Complies with Public Resources Code §§8801-8819

Complies with Public Resources Code §§8890-8902

PLS Act Ref.: 8765(d) 8771 8773 Other:

Corner/Monument: Left as found Established Rebuilt Pre-Construction
 Found and tagged Reestablished Referenced Post-Construction

Narrative of corner identified and monument as found, set, reset, replaced, or removed:

See sheet #2 for description(s):

SURVEYOR'S STATEMENT

This Corner Record was prepared by me or under my direction in conformance with

the Professional Land Surveyors' Act on January 4, 2024

Signed Zachary G. Wong P.L.S. or R.C.E. No. L.S. 7600



COUNTY SURVEYOR'S STATEMENT

This Corner Record was received January 4, 2024

and examined and filed January 9, 2024

Signed James E. Hart P.L.S. or R.C.E. No. 8657

Title County Surveyor

County Surveyor's Comment



DESCRIPTION:

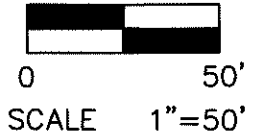
THIS DOCUMENT IS FOR THE PURPOSE OF RESETTING ANY MISSING OR OBLITERATED CORNERS FROM 1.00-ACRE PARCEL, AS SHOWN IN BOOK 24 OF SURVEYS, PAGE 16, SAN JOAQUIN COUNTY RECORDS.

*LAND PARK AT
LATHROP-PHASE 1
M&P 40-100*

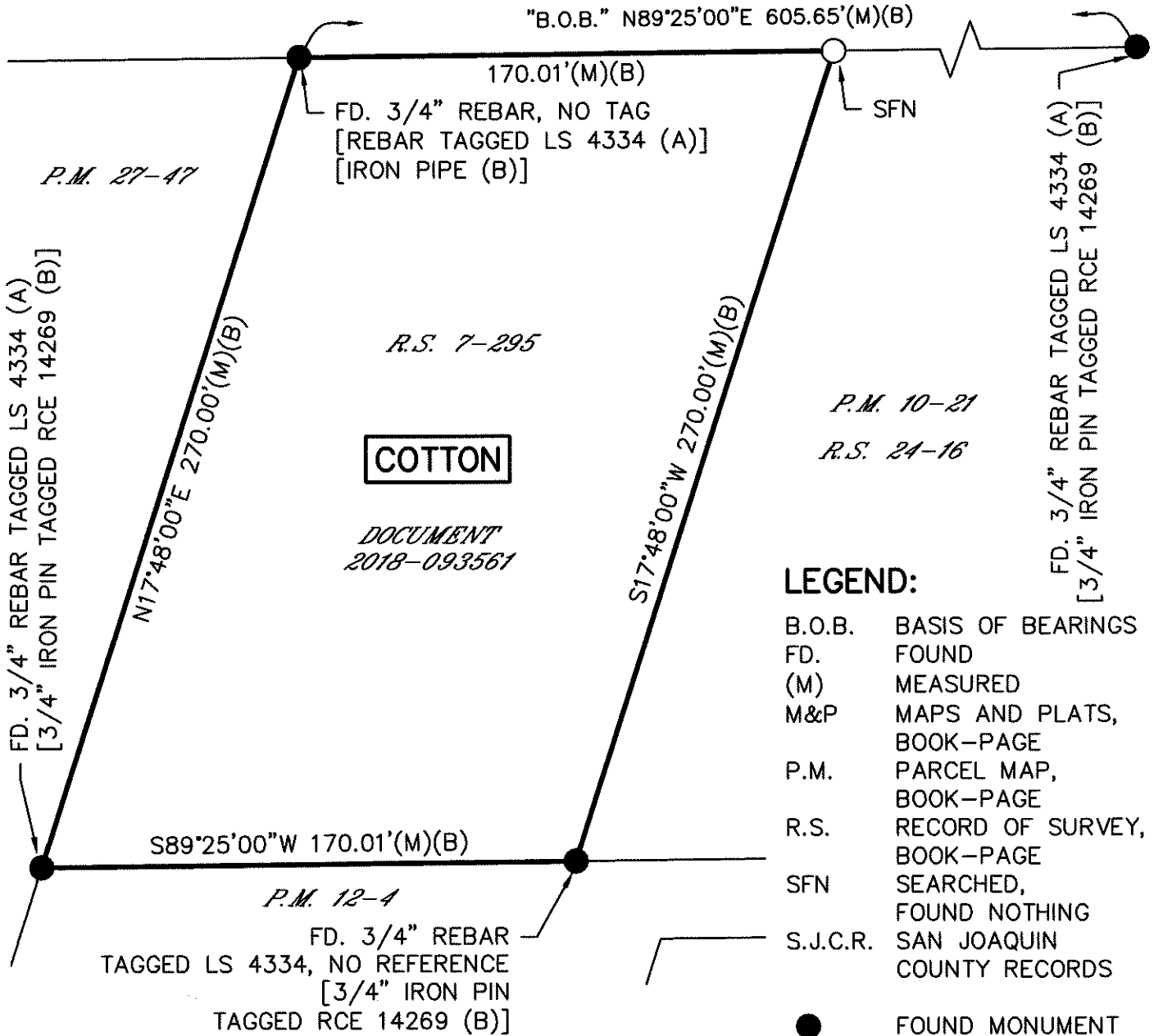
P.M. 27-62

REFERENCES:

- (A) M&P 40-100, S.J.C.R.
- (B) R.S. 24-16, S.J.C.R.



LAND PARK DRIVE



LEGEND:

- B.O.B. BASIS OF BEARINGS
- FD. FOUND
- (M) MEASURED
- M&P MAPS AND PLATS, BOOK-PAGE
- P.M. PARCEL MAP, BOOK-PAGE
- R.S. RECORD OF SURVEY, BOOK-PAGE
- SFN SEARCHED, FOUND NOTHING
- S.J.C.R. SAN JOAQUIN COUNTY RECORDS
- FOUND MONUMENT AS NOTED
- SET PK NAIL WITH STEEL WASHER STAMPED LS 7600



WONG ENGINEERS, INC.
4578 FEATHER RIVER DRIVE, SUITE A
STOCKTON, CA 95219 (209) 476-0011
JANUARY 4, 2024 PAGE 2 OF 2