

CORNER RECORD

Agency Index CR-24-001

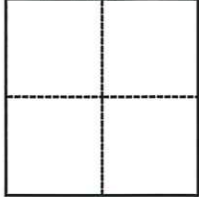
Document Number _____

City of _____ County of SAN JOAQUIN, California

Brief Legal Description _____ A.P.N. 179-110-11 AND 14

CORNER TYPE

COORDINATES (Optional)



- Government Corner
- Meander
- Rancho
- Control
- Property
- Other

N. _____ E. _____

Elevation _____

Units Metric U.S. Survey Foot

Horizontal Datum _____

Zone _____ Epoch Date _____

Vertical Datum _____

Complies with Public Resources Code §§8801-8819

Complies with Public Resources Code §§8890-8902

SEC. 47, S.M. WEBER GRANT

PLS Act Ref.: 8765(d) 8771 8773 Other:

Corner/Monument: Left as found Established Rebuilt Pre-Construction

Found and tagged Reestablished Referenced Post-Construction

Narrative of corner identified and monument as found, set, reset, replaced, or removed:

See sheet #2 for description(s):

SURVEYOR'S STATEMENT

This Corner Record was prepared by me or under my direction in conformance with the Professional Land Surveyors' Act on December 21, 2023

Signed Joe Murphy P.L.S. or R.C.E. No. 7269



COUNTY SURVEYOR'S STATEMENT

This Corner Record was received December 27, 2023

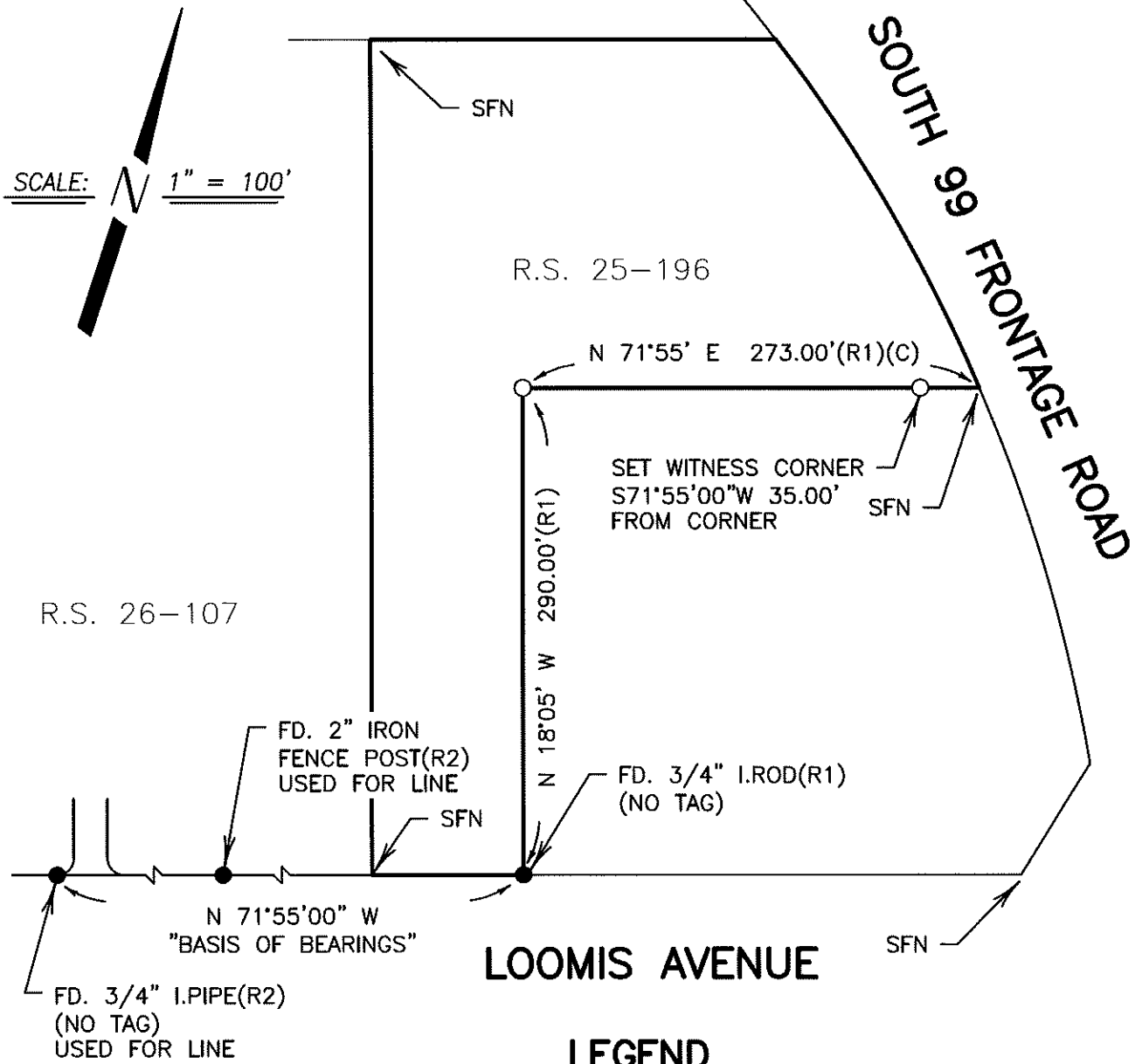
and examined and filed January 4, 2024

Signed James E. Hart P.L.S. or R.C.E. No. 8657

Title County Surveyor

County Surveyor's Comment





REFERENCES:

- (R1) R.S. 25-196, S.J.C.R.
- (R2) R.S. 26-107, S.J.C.R.

LEGEND

FD.	FOUND
S.J.C.R.	SAN JOAQUIN COUNTY RECORDS
(M)	MEASURED
(C)	CALCULATED FROM RECORD
S.J.CO.	SAN JOAQUIN COUNTY
I.PIPE	IRON PIPE
R.S.	RECORD OF SURVEY
P.M.	PARCEL MAP
I.ROD	IRON ROD
●	FD. MONUMENT AS NOTED
○	SET NAIL AND TAG L.S. 7269
A.P.N.	ASSESSOR'S PARCEL NUMBER