

CORNER RECORD

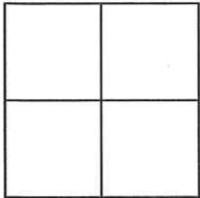
Agency Index CR-23-295

Document Number _____

City of TRACY

County of SAN JOAQUIN, California

Brief Legal Description CALTRANS MONUMENT 409, 2000'± WEST OF N. MACARTHUR DR.



CORNER TYPE

- Government Corner Control
 Meander Property
 Rancho Other

Date of Survey 9/1/2023

COORDINATES (Optional)

- N. _____ E. _____
 Elevation _____
 Units Metric U.S. Survey Foot
 Horizontal Datum _____
 Zone _____ Epoch Date _____
 Vertical Datum _____
 Complies with Public Resources Code §§8801-8819
 Complies with Public Resources Code §§8890-8902

- PLS Act Ref: 8765(d) 8771 8773 Other:
 Corner/Monument: Left as found Established Rebuilt Pre-Construction
 Found and tagged Reestablished Referenced Post-Construction

Narrative of corner identified and monument as found, set, reset, replaced, or removed:

See sheet #2 for description(s):

FOUND 2" BRASS DISK, IN MONUMENT WELL, W/ PUNCH, STAMPED "CALIFORNIA DIVISION OF HIGHWAYS 409", 560'(FT)± WEST OF U.P.R.R. OVERPASS.
 SET REBAR AND CAP STAMPED "PLS 8593" IN MEDIAN, SET NAIL & TAG STAMPED LS 8593 IN CONCRETE AS REFERENCE POINTS TO BE USED TO RESET MONUMENT SHOULD IT BE DISTURBED DURING CONSTRUCTION ACTIVITIES.
 SEE SHEET 2 FOR GRAPHICS.

SURVEYOR'S STATEMENT

This Corner Record was prepared by me or under my direction in conformance with the Professional Land Surveyors' Act on NOVEMBER 16, 2023

Signed [Signature] (P.L.S.) or R.C.E. No. 8593



COUNTY SURVEYOR'S STATEMENT

This Corner Record was received December 8, 2023

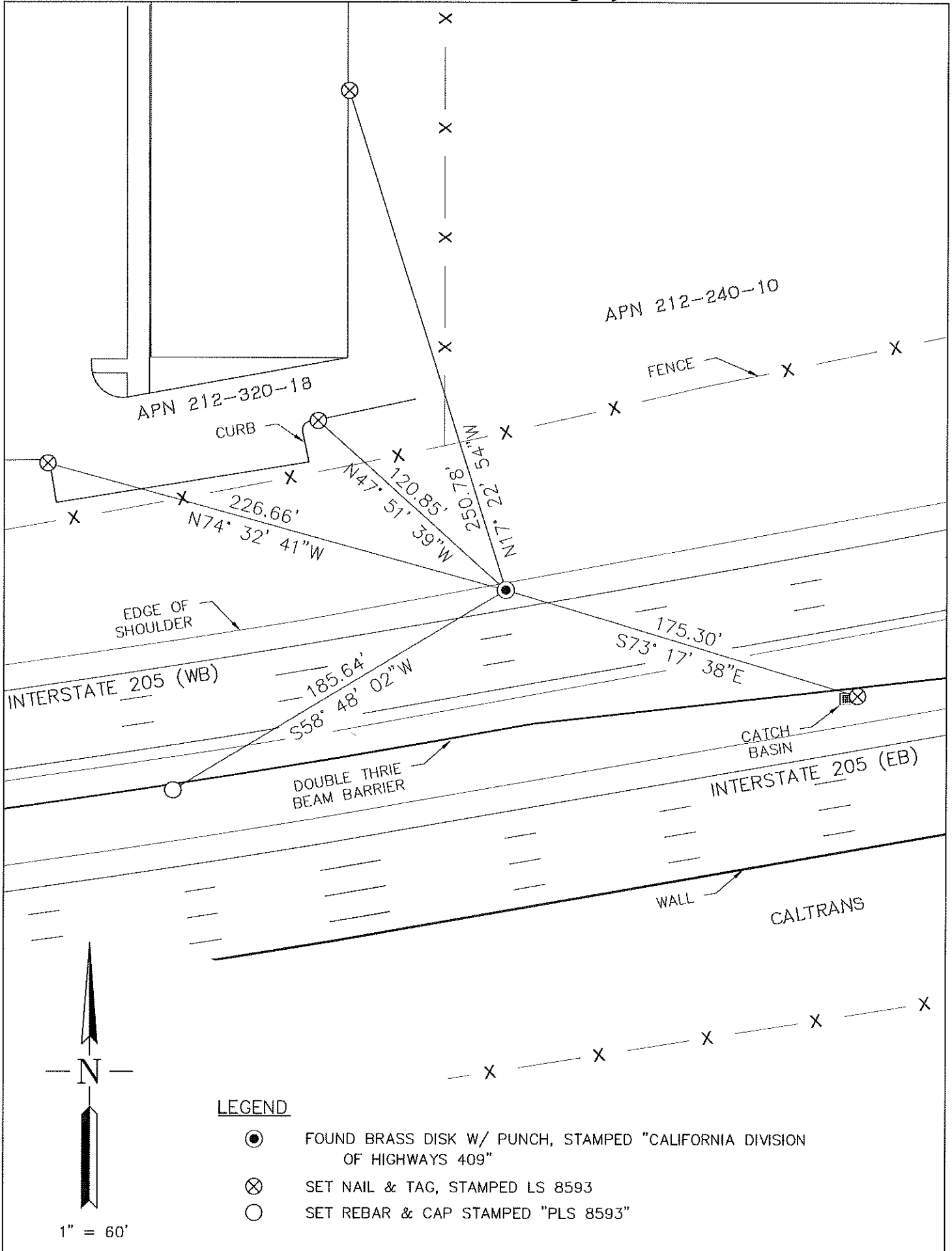
and examined and filed December 12, 2023

Signed James E. Hart P.L.S. or R.C.E. No. 8657

Title County Surveyor



County Surveyor's Comment _____



LEGEND

- FOUND BRASS DISK W/ PUNCH, STAMPED "CALIFORNIA DIVISION OF HIGHWAYS 409"
- ⊗ SET NAIL & TAG, STAMPED LS 8593
- SET REBAR & CAP STAMPED "PLS 8593"