

# CORNER RECORD

Agency Index

CR-23-291

Document Number

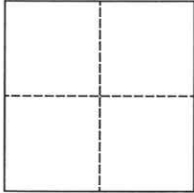
City of \_\_\_\_\_ County of San Joaquin, California

Brief Legal Description Kasson Road @ Durham Ferry Road

Within Rancho El Pescadero

### CORNER TYPE

### COORDINATES (Optional)



Government Corner  Control   
Meander  Property   
Rancho  Other

N. \_\_\_\_\_ E. \_\_\_\_\_

Elevation. \_\_\_\_\_

Units Metric  U.S. Survey Foot

Horizontal Datum \_\_\_\_\_

Zone \_\_\_\_\_ Epoch Date \_\_\_\_\_

Vertical Datum \_\_\_\_\_

Date of Survey September 19, 2022

Complies with Public Resources Code §§8801-8819

Complies with Public Resources Code §§8890-8902

PLS Act Ref.:

8765(d)

8771

8773

Other:

Corner/

Left as found

Established

Rebuilt

Pre-Construction

Monument:

Found and tagged

Reestablished

Referenced

Post-Construction

Narrative of corner identified and monument as found, set, reset, replaced, or removed:

See sheet #2 for description(s):

### SURVEYOR'S STATEMENT

This Corner Record was prepared by me or under my direction in conformance with

the Professional Land Surveyor's Act on December 19, 2022

Signed James E Hart P.L.S. or R.C.E. No. 8657



### COUNTY SURVEYOR'S STATEMENT

This Corner Record was received November 17, 2023

and examined and filed December 5, 2023

Signed James E Hart P.L.S. or R.C.E. No. 8657

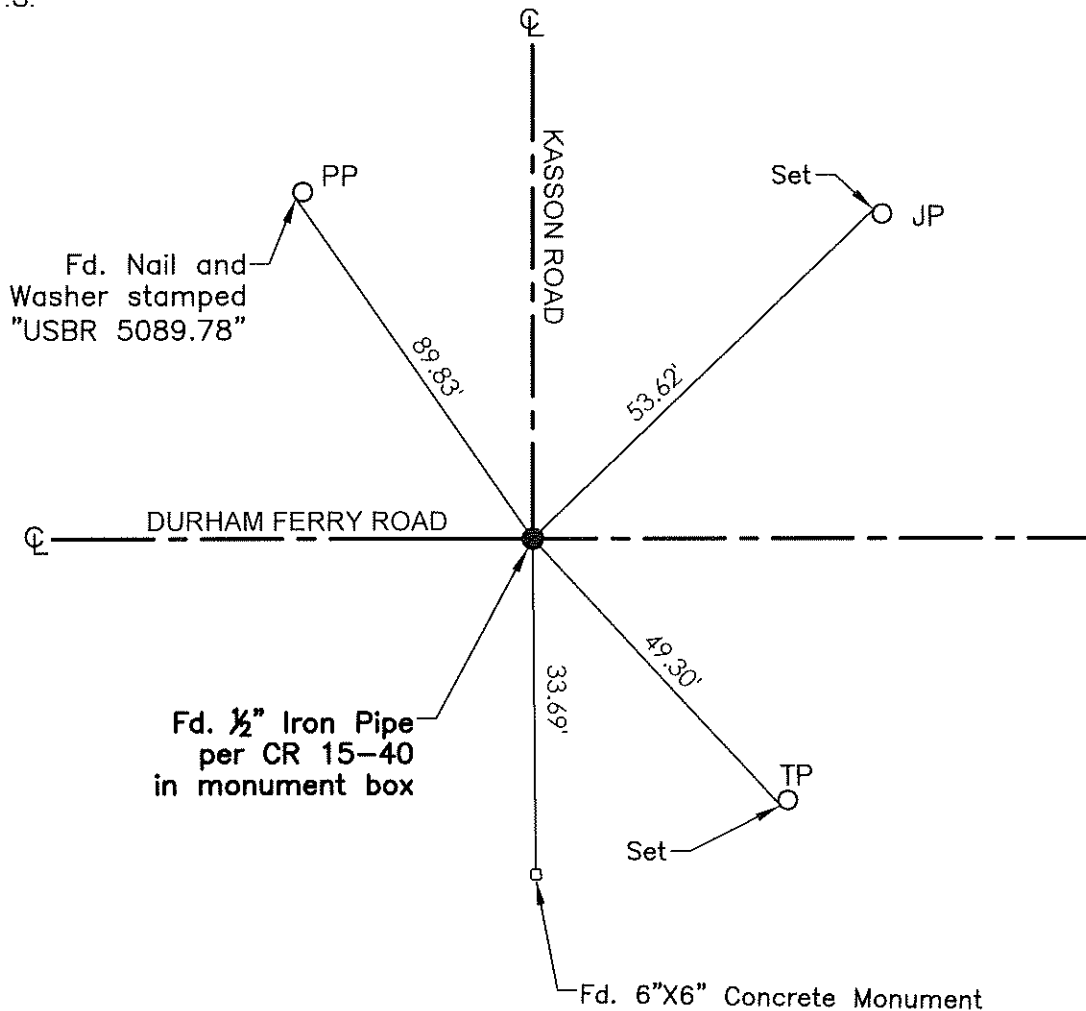
Title \_\_\_\_\_ County Surveyor

County Surveyor's Comment





N.T.S.



Fd. Nail and Washer stamped "USBR 5089.78"

Fd. 1/2" Iron Pipe per CR 15-40 in monument box

Fd. 6"X6" Concrete Monument

- TR=Tree
- MB=Mailbox
- BM=Bench Mark
- EP=Edge of Pavement
- YL=Yellow Line
- FH=Fire Hydrant
- CR=Corner Record
- FP=Fence Post
- JP=Joint Pole
- LP=Light Pole
- PP=Power Pole
- GP=Guy Pole
- SP=Service Pole
- TP=Telephone Pole
- S.F.N.=Searched Found Nothing
- N.T.S.=Not To Scale
- M&P=Maps & Plats
- PM=Parcel Map
- RS=Record of Survey
- FB=Field Book
- N=North
- SDI=Storm Drain Inlet
- TOC=Top of Curb
- PCC=Portland Cement Concrete

Set=Conc. Nail with Brass Washer stamped "S.J. Co.", unless otherwise noted  
 Fd.=Found Conc. Nail with Brass Washer stamped "S.J. Co.", unless otherwise noted  
 Note: Found Monuments are not tagged unless otherwise noted.

"No attempt was made to verify the Monument(s)"