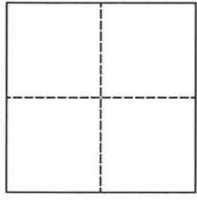


CORNER RECORD

Agency Index CR-23-289
 Document Number _____

City of _____ County of San Joaquin, California

Brief Legal Description St. Carlo Avenue 100'± east of Pershing Avenue
Within Sec. 16, T2N, R6E, Mount Diablo Base & Meridian



CORNER TYPE

Government Corner Control
 Meander Property
 Rancho Other
 Date of Survey August 18, 2022

COORDINATES (Optional)

N. _____ E. _____
 Elevation. _____
 Units Metric U.S. Survey Foot
 Horizontal Datum _____
 Zone _____ Epoch Date _____
 Vertical Datum _____
 Complies with Public Resources Code §§8801-8819
 Complies with Public Resources Code §§8890-8902

PLS Act Ref.: 8765(d) 8771 8773 Other:
 Corner/Monument: Left as found Established Rebuilt Pre-Construction
 Found and tagged Reestablished Referenced Post-Construction

Narrative of corner identified and monument as found, set, reset, replaced, or removed:
 See sheet #2 for description(s):

SURVEYOR'S STATEMENT

This Corner Record was prepared by me or under my direction in conformance with
 the Professional Land Surveyor's Act on November 4, 2022
 Signed James E Hart P.L.S. or R.C.E. No. 8657

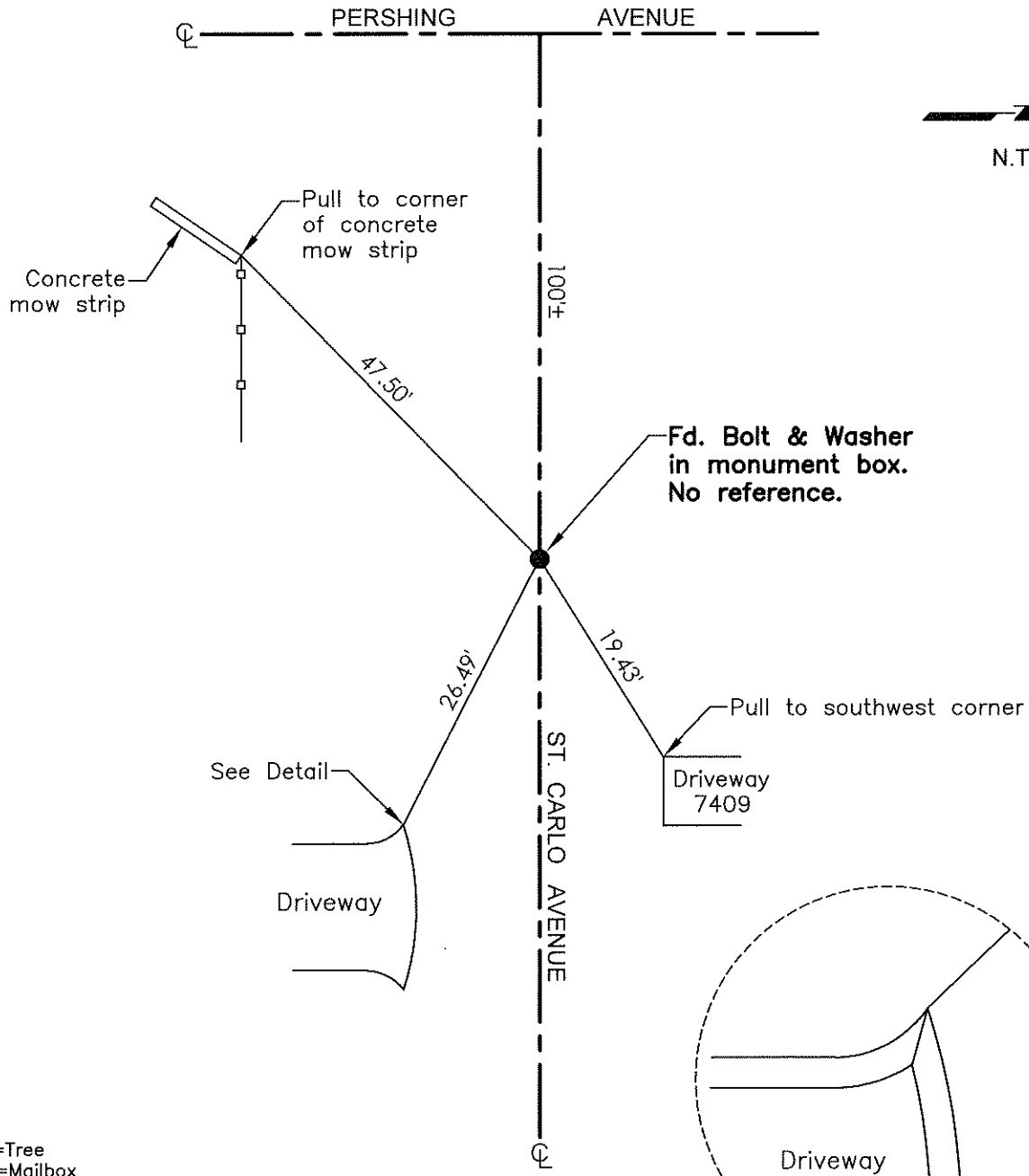


COUNTY SURVEYOR'S STATEMENT

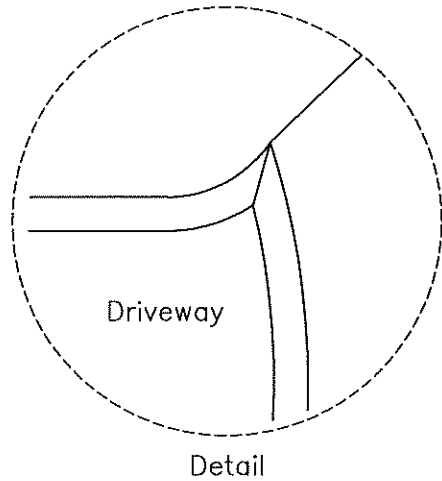
This Corner Record was received October 3, 2023
 and examined and filed November 2, 2023
 Signed James E Hart P.L.S. or R.C.E. No. 8657
 Title County Surveyor



County Surveyor's Comment



- TR=Tree
- MB=Mailbox
- BM=Bench Mark
- EP=Edge of Pavement
- YL=Yellow Line
- FH=Fire Hydrant
- CR=Corner Record
- FP=Fence Post
- JP=Joint Pole
- LP=Light Pole
- PP=Power Pole
- GP=Guy Pole
- SP=Service Pole
- TP=Telephone Pole
- S.F.N.=Searched Found Nothing
- N.T.S.=Not To Scale
- M&P=Maps & Plats
- PM=Parcel Map
- RS=Record of Survey
- FB=Field Book
- N=North
- SDI=Storm Drain Inlet
- TOC=Top of Curb
- PCC=Portland Cement Concrete



Set=Conc. Nail with Brass Washer stamped "S.J. Co.", unless otherwise noted
 Fd.=Found Conc. Nail with Brass Washer stamped "S.J. Co.", unless otherwise noted
 Note: Found Monuments are not tagged unless otherwise noted.

"No attempt was made to verify the Monument(s)"