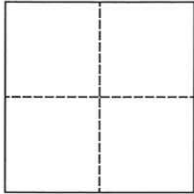


CORNER RECORD

Agency Index

CR-23-287

Document Number

City of _____ County of San Joaquin, CaliforniaBrief Legal Description West Ripon Road @ Olive AvenueWithin Sec. 25, T2S, R7E, Mount Diablo Base & Meridian**CORNER TYPE****COORDINATES (Optional)**Government Corner Control Meander Property Rancho Other Date of Survey July 15, 2022

N. _____ E. _____

Elevation. _____

Units Metric U.S. Survey Foot

Horizontal Datum _____

Zone _____ Epoch Date _____

Vertical Datum _____

 Complies with Public Resources Code §§8801-8819 Complies with Public Resources Code §§8890-8902

PLS Act Ref.:

 8765(d) 8771 8773 Other:

Corner/

 Left as found Established Rebuilt Pre-Construction

Monument:

 Found and tagged Reestablished Referenced Post-Construction

Narrative of corner identified and monument as found, set, reset, replaced, or removed:

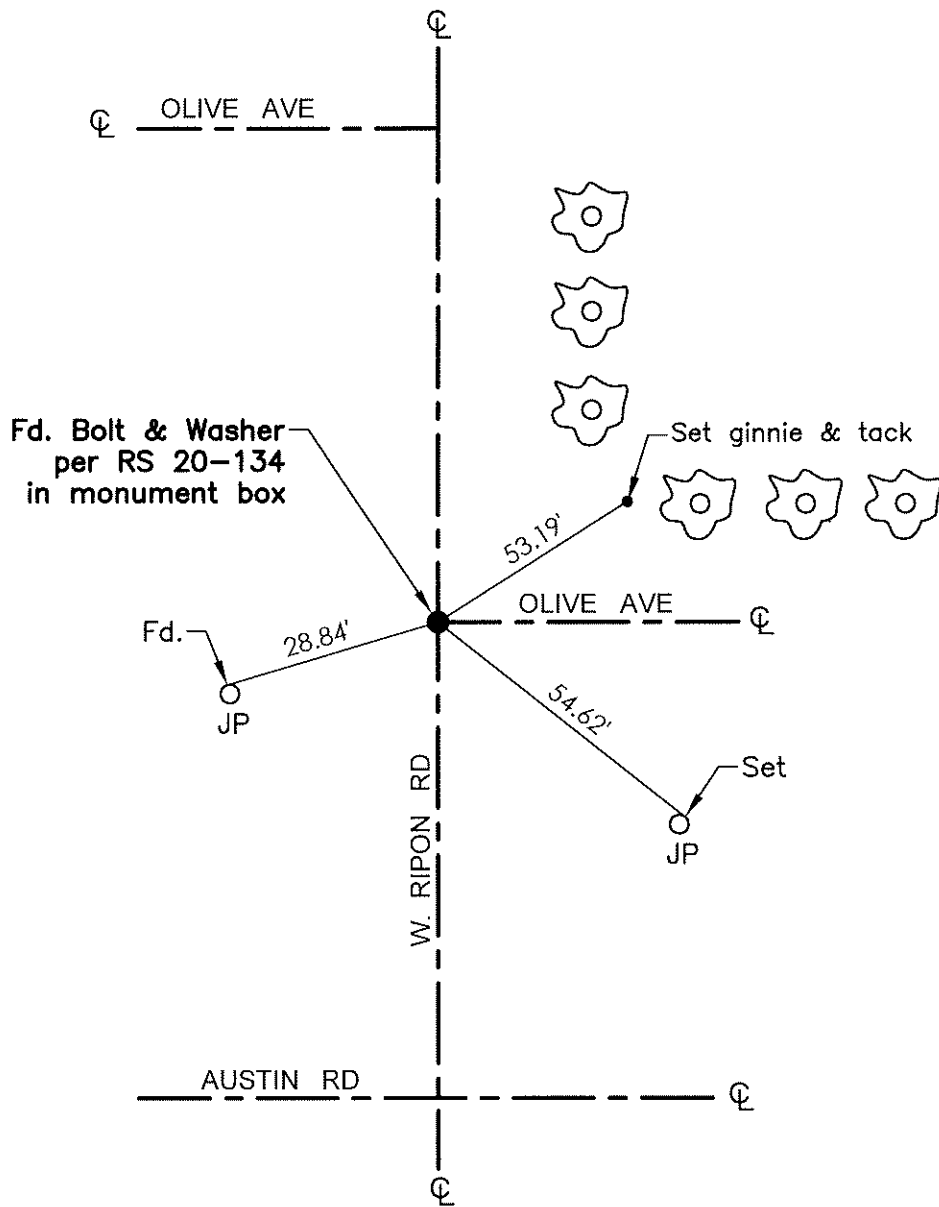
 See sheet #2 for description(s):**SURVEYOR'S STATEMENT**

This Corner Record was prepared by me or under my direction in conformance with

the Professional Land Surveyor's Act on October 3, 2022Signed James E. Hart P.L.S. or P.C.E. No. 8657**COUNTY SURVEYOR'S STATEMENT**This Corner Record was received November 17, 2023and examined and filed December 5, 2023Signed James E. Hart P.L.S. or P.C.E. No. 8657

Title _____ County Surveyor

County Surveyor's Comment



- TR=Tree
- MB=Mailbox
- BM=Bench Mark
- EP=Edge of Pavement
- YL=Yellow Line
- FH=Fire Hydrant
- CR=Corner Record
- FP=Fence Post
- JP=Joint Pole
- LP=Light Pole
- PP=Power Pole
- GP=Guy Pole
- SP=Service Pole
- TP=Telephone Pole
- S.F.N.=Searched Found Nothing
- N.T.S.=Not To Scale
- M&P=Maps & Plats
- PM=Parcel Map
- RS=Record of Survey
- FB=Field Book
- N=North
- SDI=Storm Drain Inlet
- TOC=Top of Curb
- PCC=Portland Cement Concrete

Set=Conc. Nail with Brass Washer stamped "S.J. Co.", unless otherwise noted
 Fd.=Found Conc. Nail with Brass Washer stamped "S.J. Co.", unless otherwise noted
 Note: Found Monuments are not tagged unless otherwise noted.

"No attempt was made to verify the Monument(s)"