

# CORNER RECORD

Agency Index CR-23-270

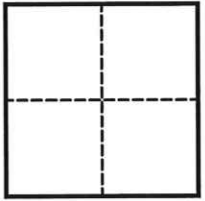
Document Number \_\_\_\_\_

City of STOCKTON County of SAN JOAQUIN, California

Brief Legal Description MONUMENT WELL AT THE NORTHERLY CURB RETURN N. PILGRIM STREET AND PINCHOT ST

### CORNER TYPE

### COORDINATES (Optional)



- Government Corner
- Meander
- Rancho
- Control
- Property
- Other

N. \_\_\_\_\_ E. \_\_\_\_\_  
 Elevation \_\_\_\_\_  
 Units  Metric  U.S. Survey Foot  
 Horizontal Datum \_\_\_\_\_  
 Zone \_\_\_\_\_ Epoch Date \_\_\_\_\_  
 Vertical Datum \_\_\_\_\_  
 Complies with Public Resources Code §§8801-8819  
 Complies with Public Resources Code §§8890-8902

Date of Survey SEPTEMBER 2, 2023

PLS Act Ref.:  8765(d)  8771  8773  Other:  
 Corner/ Monument:  Left as found  Established  Rebuilt  Pre-Construction  
 Found and tagged  Reestablished  Referenced  Post-Construction

Narrative of corner identified and monument as found, set, reset, replaced, or removed:

See sheet #2 for description(s):

FOUND 1-1/2" IRON PIN, WITH PUNCH IN MONUMENT WELL LOCATED APPROXIMATELY 5' ± EASTERLY OF THE NORTHERLY CURB RETURN OF N. PILGRIM STREET AND E. PINCHOT STREET. NO REFERENCE.

MONUMENT WAS REFERENCED PRIOR TO THE START OF CONSTRUCTION OF A WATER MAIN REPLACEMENT, PROJECT NO. STK-18AM2 BY CALIFORNIA WATER SERVICE.

### SURVEYOR'S STATEMENT

This Corner Record was prepared by me or under my direction in conformance with the Professional Land Surveyors' Act on SEPTEMBER 5, 2023  
 Signed [Signature] P.L.S. or R.C.E. No. 9251

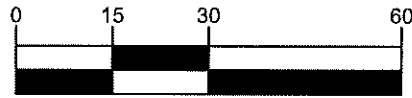


### COUNTY SURVEYOR'S STATEMENT

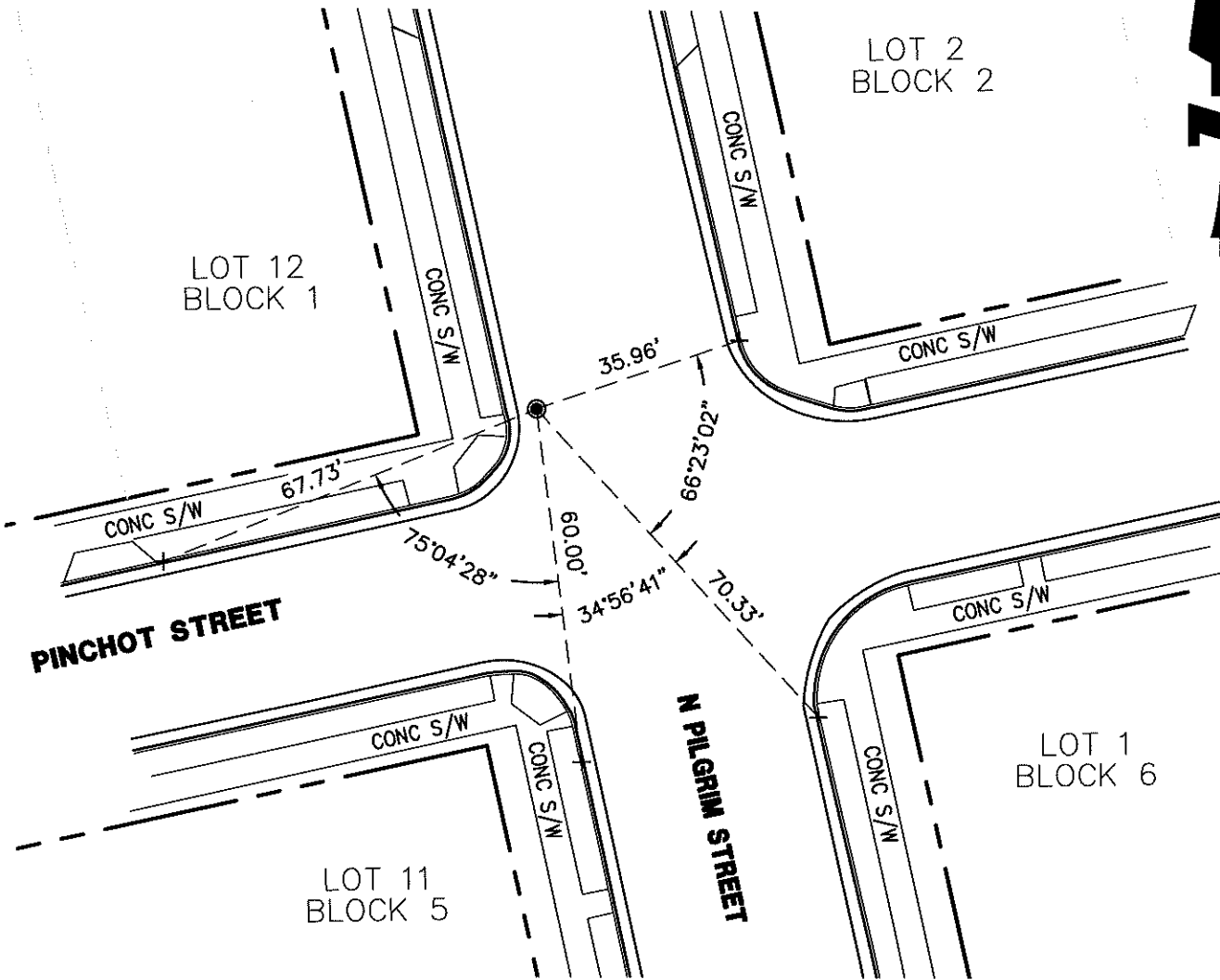
This Corner Record was received November 22, 2023  
 and examined and filed December 5, 2023  
 Signed James E. Hart P.L.S. or R.C.E. No. 8657  
 Title County Surveyor



### County Surveyor's Comment



( SCALE IN FEET )



**LEGEND**

- FOUND 1-1/2" IRON PIN, WITH PUNCH IN MONUMENT WELL, NO REFERENCE.
- × SET MAG WITH WASHER ON CONCRETE CURB UNLESS OTHERWISE NOTED.

LOT \_\_\_\_\_ DENOTES THE LOT AND BLOCK AS SHOWN ON "MAP OF THE OAKS" IN BOOK OF  
 BLOCK \_\_\_\_\_ MAPS, VOL. 5 AT PAGE 3, SAN JOAQUIN COUNTY RECORDS.



1730 N. FIRST STREET  
 SUITE 600  
 SAN JOSE, CA 95112  
 (408) 467-9100  
 www.bkf.com

SUBJECT PRE-CONSTRUCTION CORNER RECORD  
AT THE INTERSECTION OF N. PILGRIM STREET AND  
PINCHOT STREET  
 JOB NO. 20191483-STOCKTON MON PRESERVATION  
 BY CCB APPR. BHS DATE 09-05-2023

K:\Users\jw\OneDrive\Documents\Projects\20191483-STOCKTON MON PRESERVATION & RECORDS