

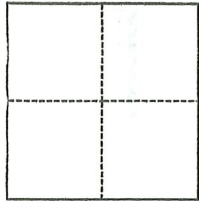
CORNER RECORD

Agency Index CR-23-261
Document Number _____

City of _____ County of SAN JOAQUIN, California
Brief Legal Description PORTIONS OF P.M. 12-144, R.S. 19-129, R.S. 22-28 & R.S. 33-16, S.J.C.R.

CORNER TYPE

COORDINATES (Optional)



- Government Corner
- Meander
- Rancho
- Control
- Property
- Other

Date of Survey October 16, 2023

N. _____ E. _____
 Elevation _____
 Units Metric U.S. Survey Foot
 Horizontal Datum _____
 Zone _____ Epoch Date _____
 Vertical Datum _____
 Complies with Public Resources Code §§8801-8819
 Complies with Public Resources Code §§8890-8902

PLS Act Ref.: 8765(d) 8771 8773 Other:
 Corner/Monument: Left as found Established Rebuilt Pre-Construction
 Found and tagged Reestablished Referenced Post-Construction

Narrative of corner identified and monument as found, set, reset, replaced, or removed:

See sheet #2 for description(s):

SEE SHEET 2 OF 2 FOR MONUMENTS RECORD FOUND AND UNCOVERED DURING RETRACEMENT SURVEY.

SURVEYOR'S STATEMENT

This Corner Record was prepared by me or under my direction in conformance with
 the Professional Land Surveyors' Act on 11/10/2023
 Signed Walter John Shoup P.L.S. or R.C.E. No. 7736

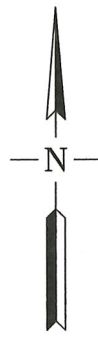
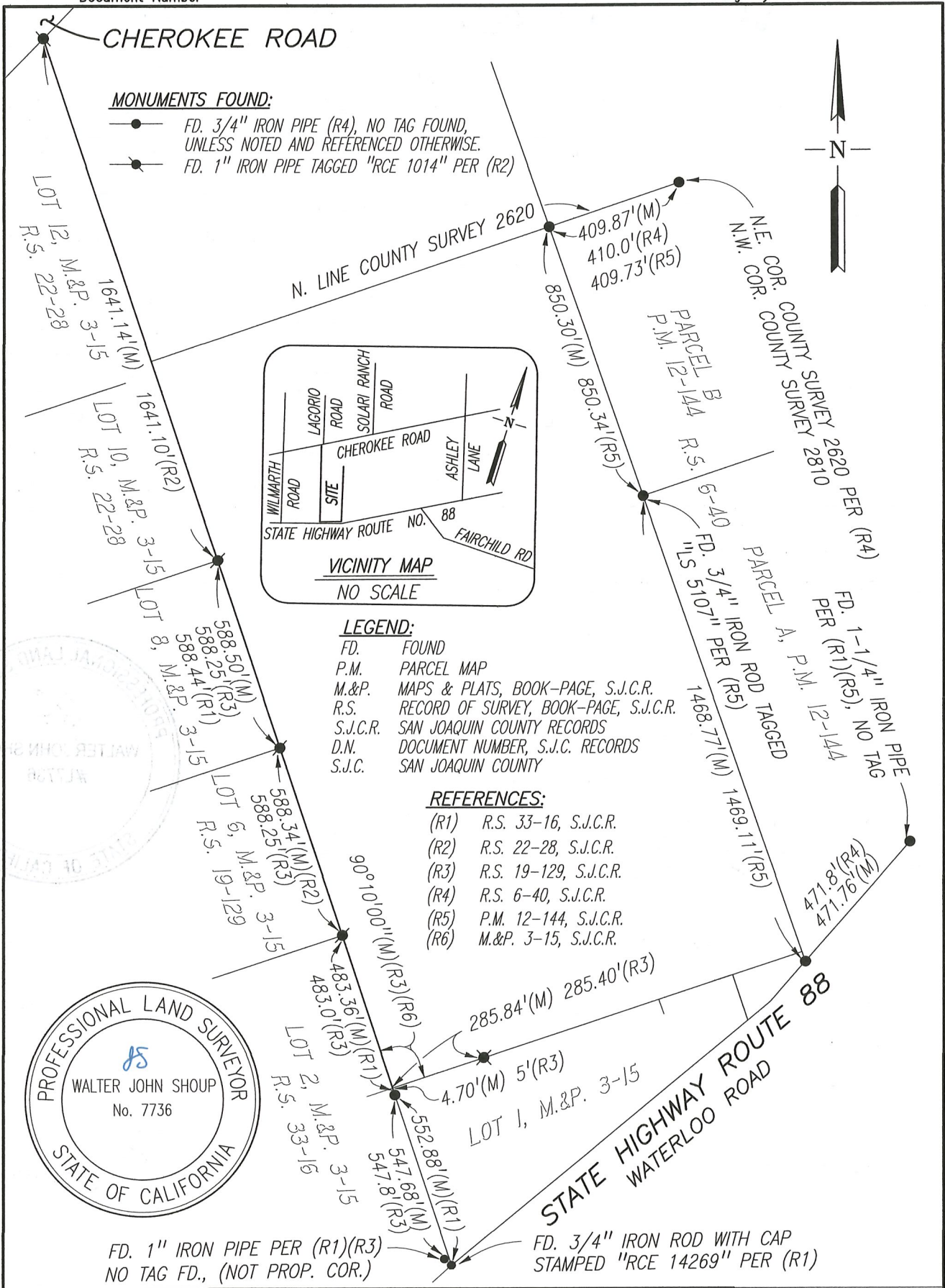


COUNTY SURVEYOR'S STATEMENT

This Corner Record was received November 14, 2023
 and examined and filed November 22, 2023
 Signed James E. Hart P.L.S. or R.C.E. No. 8657
 Title County Surveyor



County Surveyor's Comment



Scale: 1"=400'	SHOUP LAND SURVEYING CORNER RECORD	Date: 11/10/2023
Job No.: 23-141		DWG: 23141CR.DWG