

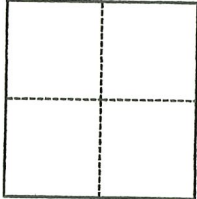
CORNER RECORD

Agency Index CR-23-258
Document Number _____

City of STOCKTON County of SAN JOAQUIN, California
Brief Legal Description INTERSECTION OF PARK STREET & MADISON STREET

CORNER TYPE

COORDINATES (Optional)



- Government Corner
- Meander
- Rancho
- Control
- Property
- Other

Date of Survey October 30, 2023

N. _____ E. _____
 Elevation _____
 Units Metric U.S. Survey Foot
 Horizontal Datum _____
 Zone _____ Epoch Date _____
 Vertical Datum _____
 Complies with Public Resources Code §§8801-8819
 Complies with Public Resources Code §§8890-8902

- PLS Act Ref.: 8765(d) 8771 8773 Other:
- Corner/Monument: Left as found Established Rebuilt Pre-Construction
 Found and tagged Reestablished Referenced Post-Construction

Narrative of corner identified and monument as found, set, reset, replaced, or removed:
 See sheet #2 for description(s):

SEE PAGE 2 OF 2 FOR EXHIBIT MAP SHOWING MONUMENTS FOUND PER CR 23-124, S.J.C.S.R., AND REESTABLISHED.

SURVEYOR'S STATEMENT

This Corner Record was prepared by me or under my direction in conformance with
 the Professional Land Surveyors' Act on October 30, 2023
 Signed Walter John Shoup P.L.S. or R.C.E. No. L-7736

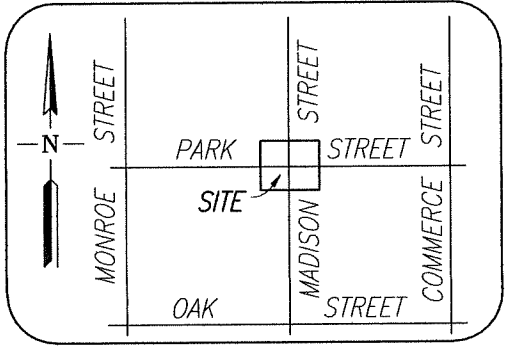
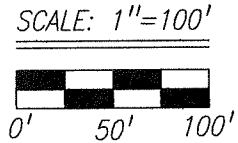
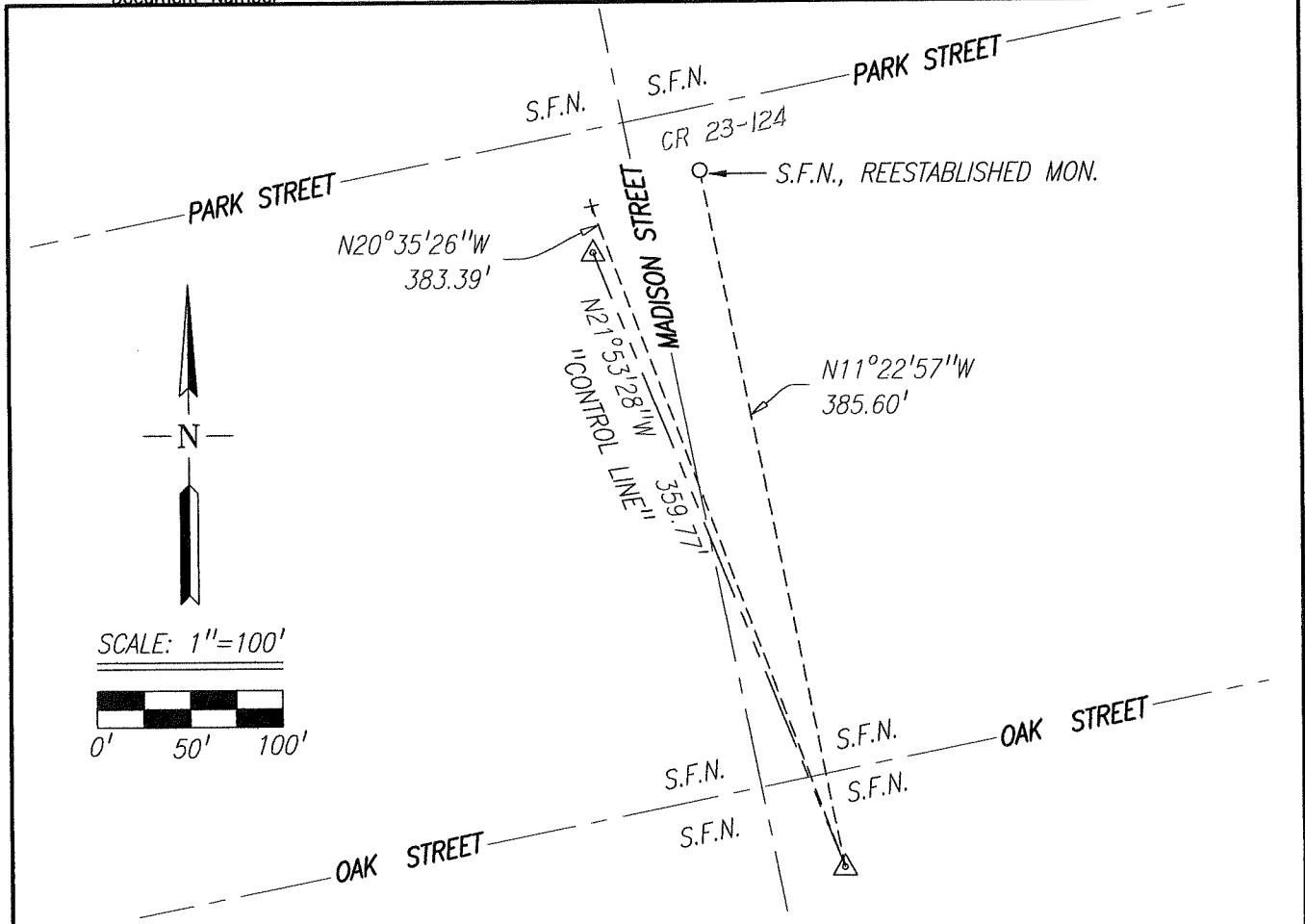


COUNTY SURVEYOR'S STATEMENT

This Corner Record was received October 31, 2023
 and examined and filed November 16, 2023
 Signed James E. Hart P.L.S. or R.C.E. No. 8657
 Title County Surveyor



County Surveyor's Comment



MONUMENTS FOUND:

- +- FD. CHISELED CROSS PER (R1)
- △- FD. MAG & WASHER STAMPED "SLS CONTROL-PLS 7736" (R1)
- SET 1.25" COPPERWELD DISK STAMPED "PLS 7736"

NOTE:

"NO ATTEMPT WAS MADE TO VERIFY THE MONUMENT(S)".

REFERENCE:

(R1) CR 23-124, S.J.C.S.R.

LEGEND:

- FD. FOUND
- MON. MONUMENT
- S.F.N. SEARCHED, FOUND NOTHING
- S.J.C.R. SAN JOAQUIN COUNTY RECORDS
- S.J.C.S.R. SAN JOAQUIN COUNTY SURVEYOR'S RECORDS
- CR CORNER RECORD, S.J.C.S.R.

Scale: 1"=100'	CORNER RECORD EXHIBIT MAP	Date: 10/30/2023
Job No.: 23-010		DWG: 23010CR-POST