

# CORNER RECORD

Agency Index CR-23-257

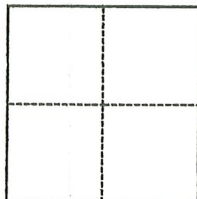
Document Number \_\_\_\_\_

City of STOCKTON County of SAN JOAQUIN, California

Brief Legal Description INTERSECTION OF HARDING WAY & MADISON STREET

### CORNER TYPE

### COORDINATES (Optional)



- Government Corner
- Meander
- Rancho
- Control
- Property
- Other

Date of Survey October 30, 2023

N. \_\_\_\_\_ E. \_\_\_\_\_

Elevation \_\_\_\_\_

Units  Metric  U.S. Survey Foot

Horizontal Datum \_\_\_\_\_

Zone \_\_\_\_\_ Epoch Date \_\_\_\_\_

Vertical Datum \_\_\_\_\_

Complies with Public Resources Code §§8801-8819

Complies with Public Resources Code §§8890-8902

PLS Act Ref.:  8765(d)  8771  8773  Other:

Corner/Monument:  Left as found  Established  Rebuilt  Pre-Construction

Found and tagged  Reestablished  Referenced  Post-Construction

Narrative of corner identified and monument as found, set, reset, replaced, or removed:

See sheet #2 for description(s):

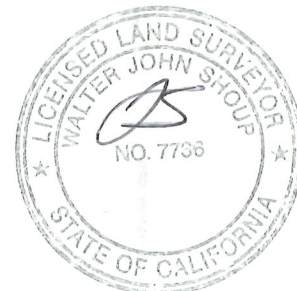
SEE PAGE 2 OF 2 FOR EXHIBIT MAP SHOWING MONUMENTS FOUND IN PLACE PER CR 23-123, S.J.C.S.R.

### SURVEYOR'S STATEMENT

This Corner Record was prepared by me or under my direction in conformance with

the Professional Land Surveyors' Act on October 30, 2023

Signed Walter John Shoup P.L.S. or R.C.E. No. L-7736



### COUNTY SURVEYOR'S STATEMENT

This Corner Record was received October 31, 2023

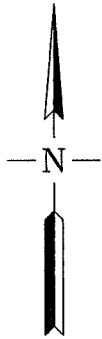
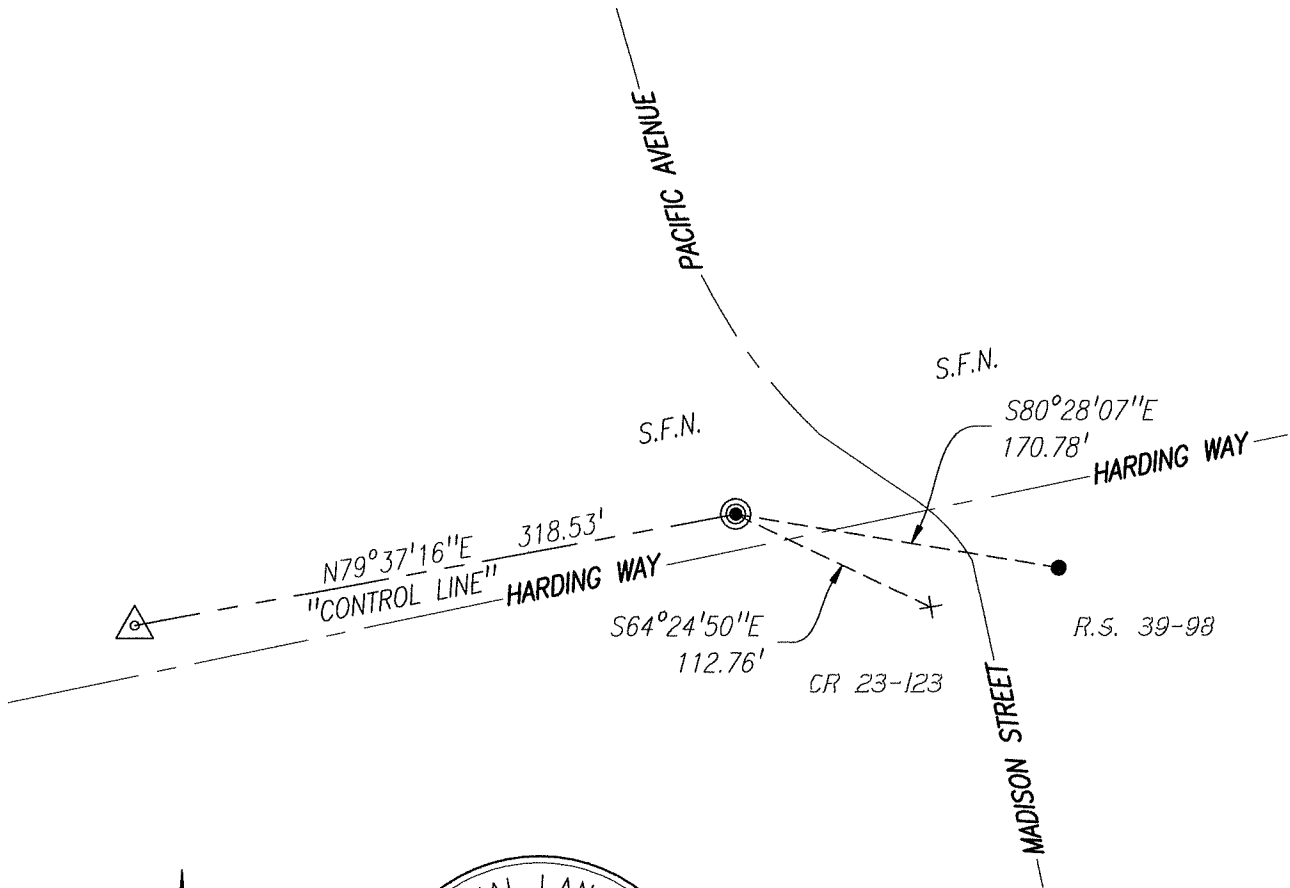
and examined and filed November 16, 2023

Signed James E Hart P.L.S. or R.C.E. No. 8657

Title County Surveyor

County Surveyor's Comment





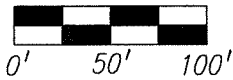
REFERENCE:

- (R1) R.S. 39-98, S.J.C.R.
- (R2) CR 23-123, S.J.C.S.R.

LEGEND:

- FD. FOUND
- MON. MONUMENT
- R.S. RECORD OF SURVEY, BOOK-PAGE, S.J.C.R.
- S.F.N. SEARCHED, FOUND NOTHING
- S.J.C.R. SAN JOAQUIN COUNTY RECORDS
- S.J.C.S.R. SAN JOAQUIN COUNTY SURVEYOR'S RECORDS
- CR CORNER RECORD, S.J.C.S.R.

SCALE: 1"=100'

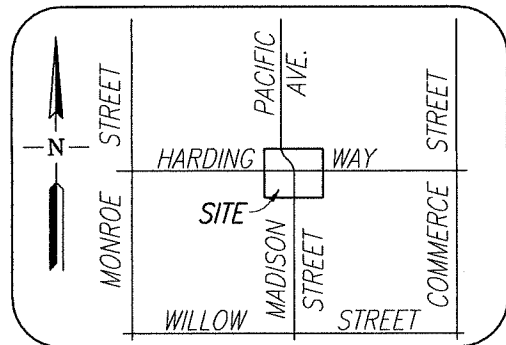


MONUMENTS FOUND:

- FD. C.O.S. MON #24, BRASS DISK STAMPED "2S-2" IN MON. WELL PER (R1)(R2)
- FD. NAIL AND BRASS TAG STAMPED "LS 7126" PER (R1)(R2)
- +— FD. CHISELED CROSS PER (R1)(R2)
- △— FD. MAG & WASHER STAMPED "SLS CONTROL-PLS 7736" PER (R2)

NOTE:

"NO ATTEMPT WAS MADE TO VERIFY THE MONUMENT(S)".



VICINITY MAP

NO SCALE

Scale: 1"=100'  
 Job No.: 23-010

**CORNER RECORD**  
**EXHIBIT MAP**

Date: 10/30/2023  
 DWG: 23010CR-POST