

# CORNER RECORD

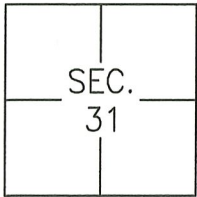
Agency Index CR-23-256

Document Number \_\_\_\_\_

City of \_\_\_\_\_

County of SAN JOAQUIN, California

Brief Legal Description MONUMENTS AS SHOWN ON P.M. 11-56 AND R.S. 23-143.



T.2S., R.5E

### CORNER TYPE

Government Corner  Control   
 Meander  Property   
 Rancho  Other

Date of Survey AUGUST 22, 2023

### COORDINATES (Optional)

N. \_\_\_\_\_ E. \_\_\_\_\_

Elevation \_\_\_\_\_

Units Metric  U.S. Survey Foot

Horizontal Datum \_\_\_\_\_

Zone \_\_\_\_\_ Epoch Date \_\_\_\_\_

Vertical Datum: \_\_\_\_\_

Complies with Public Resources Code §§8801-8819

Complies with Public Resources Code §§8890-8902

PLS Act Ref.:  8765(d)  8771  8773

Other: \_\_\_\_\_

Corner/Monument:  Left as found  Established  Rebuilt  Pre-Construction  
 Found and tagged  Reestablished  Referenced  Post-Construction

Narrative of corner identified and monument as found, set, reset, replaced, or removed:

See sheet #2 for description(s):

### SURVEYOR'S STATEMENT

This Corner Record was prepared by me or under my direction in conformance with the Professional Land Surveyor's Act on Oct. 20th, 2023.

Signed [Signature] P.L.S. or R.C.E. No.: 8366



### COUNTY SURVEYOR'S STATEMENT

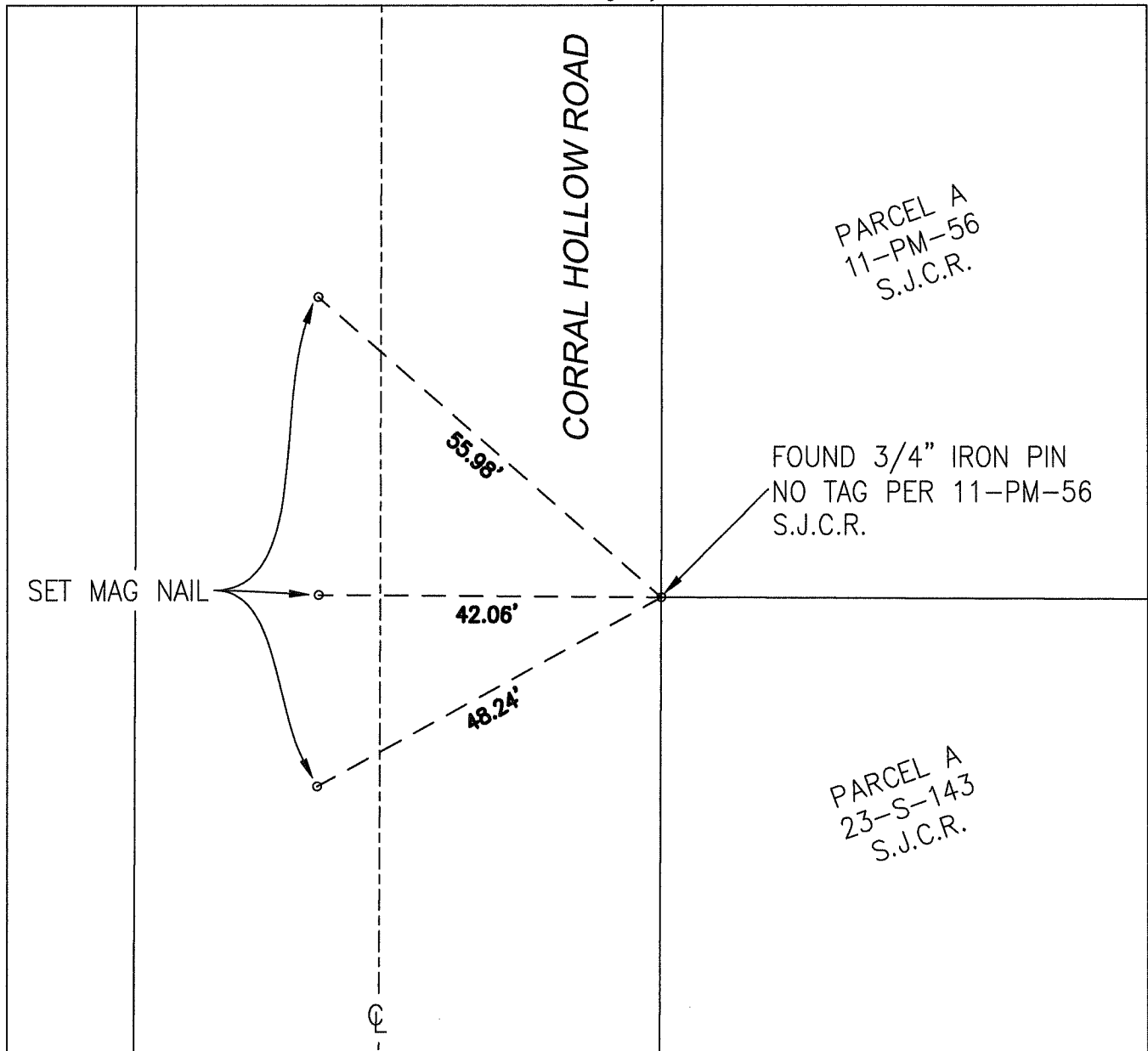
This Corner Record was received November 1, 2023 and examined and filed November 14, 2023.

Signed James E. Hart P.L.S. or R.C.E. No.: 8657

Title County Surveyor

County Surveyor's Comment \_\_\_\_\_





PARCEL A  
11-PM-56  
S.J.C.R.

FOUND 3/4" IRON PIN  
NO TAG PER 11-PM-56  
S.J.C.R.

PARCEL A  
23-S-143  
S.J.C.R.

LEGEND:

- PM      PARCEL MAP
- S        RECORD OF SURVEY
- S.J.C.R.    SAN JOAQUIN COUNTY RECORDS
- ⊕        CENTERLINE

